

Clarendon Lodge, Rue du Bocage, St Peter. JE3 7AS

£950,000 Freehold

FOR SALE



PROPERTY DESCRIPTION

Discover this stunning detached granite cottage, a spacious and versatile 3-bedroom home with an additional interconnecting one-bedroom unit, offering an impressive 2300 square feet of living space. Perfectly designed for multi-generational living or flexible use, this charming property boasts four generous reception rooms, three well-appointed bathrooms, and a convenient guest cloakroom. Set in an excellent location within the heart of St Peter's village, this cottage combines traditional character with modern comfort, providing ample outside space and parking for over four vehicles. Priced at just £400 per square foot, this property represents outstanding value in a highly sought-after area.

Situated in St Peter's village, this cottage is ideal for those seeking proximity to a wealth of local amenities. A short two-minute walk leads to St Peter's School, making it incredibly convenient for families. St Ouen's Bay is just a two-minute drive away, offering beautiful coastal scenery and recreational opportunities.

The accommodation includes three beautifully appointed bedrooms in the main house, each providing comfortable and tranquil spaces to retreat to at the end of the day. The bathrooms are modern and well-equipped, including an en-suite to one of the bedrooms as well as a family bathroom and cloakroom, alongside a third bathroom attached to the interconnecting unit. This separate one-bedroom unit offers privacy and independence, ideal for guests, relatives, or potential rental income.

This exquisite granite cottage in St Peter's combines traditional charm with contemporary living in an exceptional location. Whether you require a spacious family home, a dual-living setup, or a property with both, this residence ticks all the boxes. With excellent amenities nearby, renowned schools, and beautiful coastal access just a short drive away, it presents an outstanding opportunity to acquire a versatile and valuable home in one of the island's most desirable villages.

FEATURES

- Detached 2300sqft cottage.
- 3 bedroom house with 1 bedroom interconnecting unit.
- Excellent locality. Close proximity to all St Peter's amenities.
- Excellent value at just £400/sqft.
- 4 versatile reception areas.
- Plenty of parking and ample outside space.



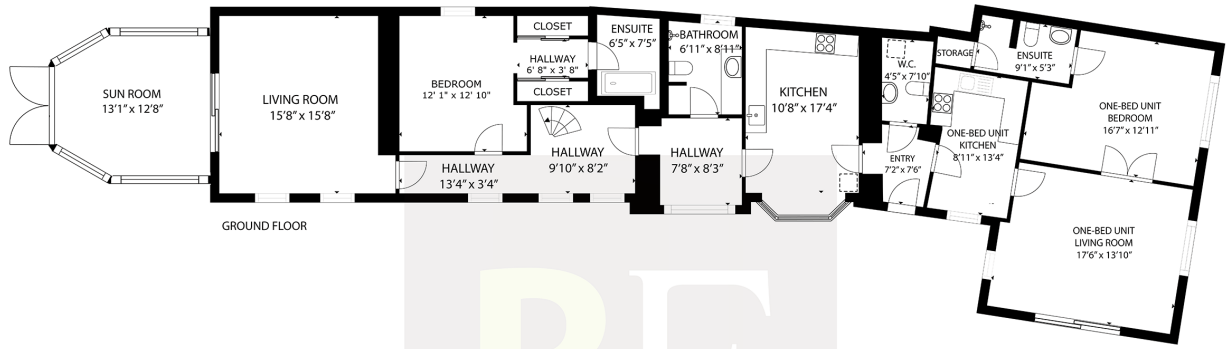
ROOM DESCRIPTIONS



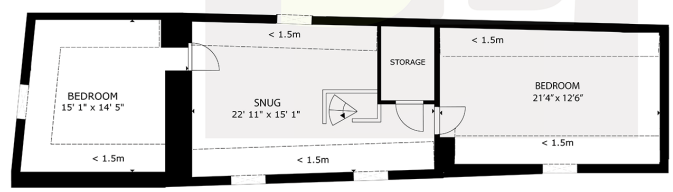




FLOORPLAN



GROUND FLOOR



FIRST FLOOR

GROSS INTERNAL AREA
 GROUND FLOOR: 1782 sq. ft, FIRST FLOOR: 509 sq. ft,
 TOTAL: 2291 sq. ft

EXCLUDED AREAS: REDUCED HEADROOM BELOW 1.5M: 302 sq. ft

SIZES AND DIMENSIONS ARE APPROXIMATE, ACTUAL MAY VARY