



Everard Road,
Southport, PR8 6NA

Offers Over £220,000

SM

STEPHANIE MACNAB
ESTATE AGENT

This SEMI-DETACHED HOUSE offers a blank canvas for the new owner to create their home.

The internal floor area exceeds 1,300 sq ft. The accommodation comprises- A spacious entrance hall. The front lounge, which opens into the dining room, and a dining kitchen.

Upstairs, there are FOUR BEDROOMS, a family bathroom and a separate WC.

Outside, there is OFF-ROAD parking and an enclosed rear garden with a garage and garden store.

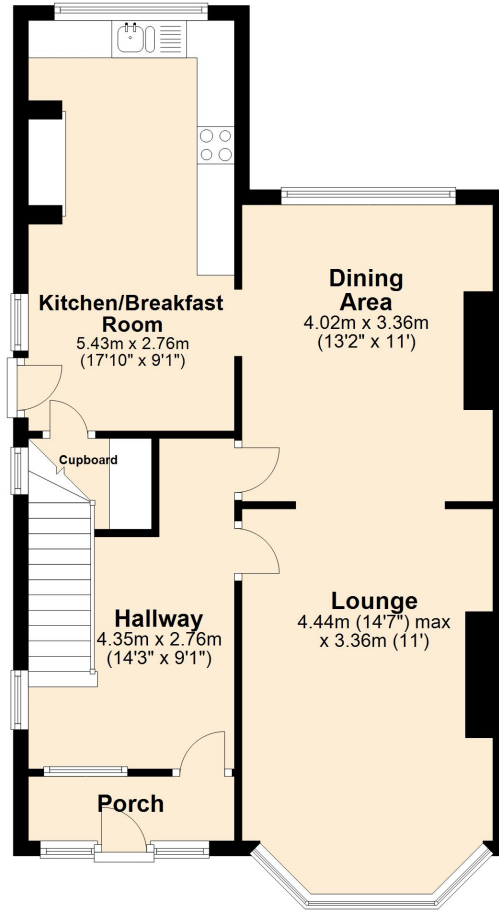
There is NO ONWARD CHAIN. FREEHOLD property. Council tax band D. Call to view 01704 516 626 - follow us on Facebook and Instagram.





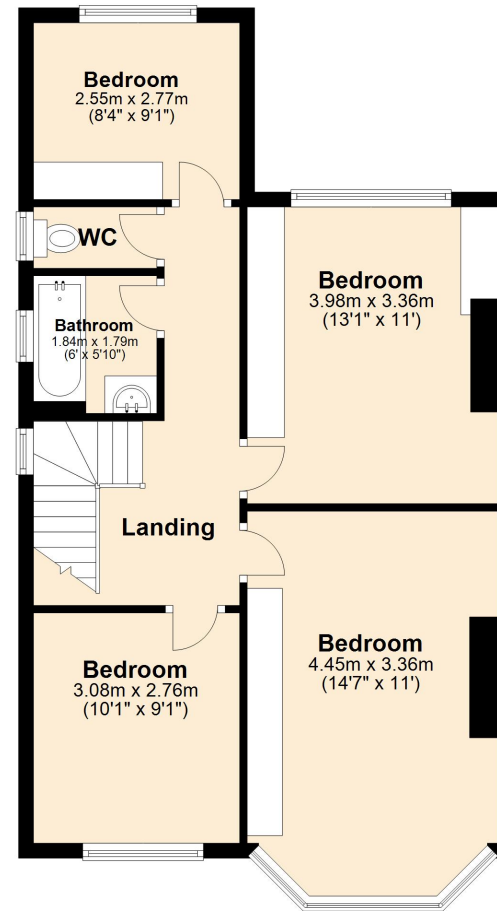
Ground Floor

Approx. 60.5 sq. metres (651.1 sq. feet)



First Floor

Approx. 61.3 sq. metres (660.0 sq. feet)



Total area: approx. 121.8 sq. metres (1311.1 sq. feet)

Plan produced using PlanUp.

