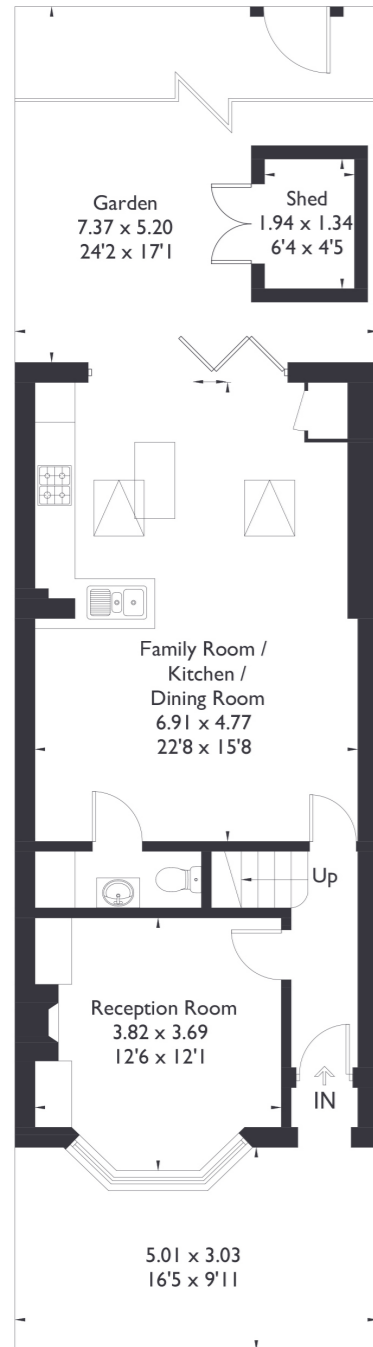
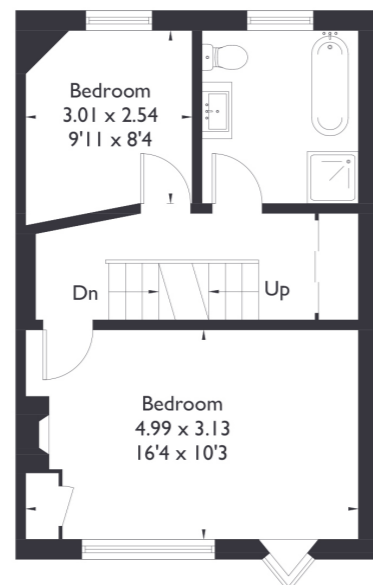


Gumleigh Road, W5

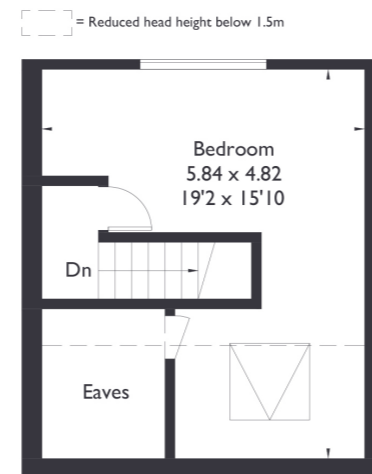
Approximate Floor Area = 116 sq m / 1249 sq ft (Excluding Shed / Eaves)



Ground Floor



First Floor



Second Floor



3 BEDROOM HOUSE

Gumleigh Road, W5

£850,000

Welcome to this charming three bedroom property in Ealing. The home features a spacious bathroom upstairs and a convenient downstairs W/C. You'll find a separate reception room, perfect for gatherings, as well as an open-plan kitchen and living/dining area that seamlessly flows through bi-fold doors into a beautiful garden.

Lovingly looked after to make the perfect family home.

FEATURES

- Three Bedrooms
- One Bathroom/Downstairs/W/C
- Open Plan Kitchen/Dining
- Little Ealing Primary School
- Northfields Station
- Northfields Amenities
- EPC Rating D



3 BEDROOM HOUSE

Gumleigh Road, W5

Situated in a fantastic location, this property falls within the catchment area of the highly regarded Little Ealing Primary School with several other excellent schools nearby.

Additionally, you'll enjoy easy access to Northfields and South Ealing stations on the Piccadilly Line, as well as the vibrant amenities of Northfields. EPC Rating D.

