



**3 Elmfield Close, Potterspury, Towcester,
Northamptonshire, NN12 7PE**

£535,000 Freehold

- FIVE BEDROOMS
- SINGLE GARAGE & DRIVEWAY PARKING
- STUDY
- TWO LARGE BATHROOMS
- HIGHLY DESIRABLE VILLAGE LOCATION
- PRIVATE ROAD
- EPC Rating





Study - 2.48m x 2.03m (8'1" x 6'7") -

Downstairs Cloakroom -

Kitchen/Breakfast Room - 6.68m x 4.23m (21'10" x 13'10") -

Dining Room - 4.38m x 3.36m (14'4" x 11'0") -

Sitting Room - 4.39m x 3.64m (14'4" x 11'11") -

Family Room - 2.95m x 2.80m (9'8" x 9'2") -

First Floor Landing -

Master Bedroom - 5.00m x 3.34m (16'4" x 10'11") -

En Suite -

Bedroom Two - 3.69m x 3.20m (12'1" x 10'5") -

Bedroom Three - 3.57m x 2.75m (11'8" x 9'0") -

Bedroom Four - 2.99m x 2.75m (9'9" x 9'0") -

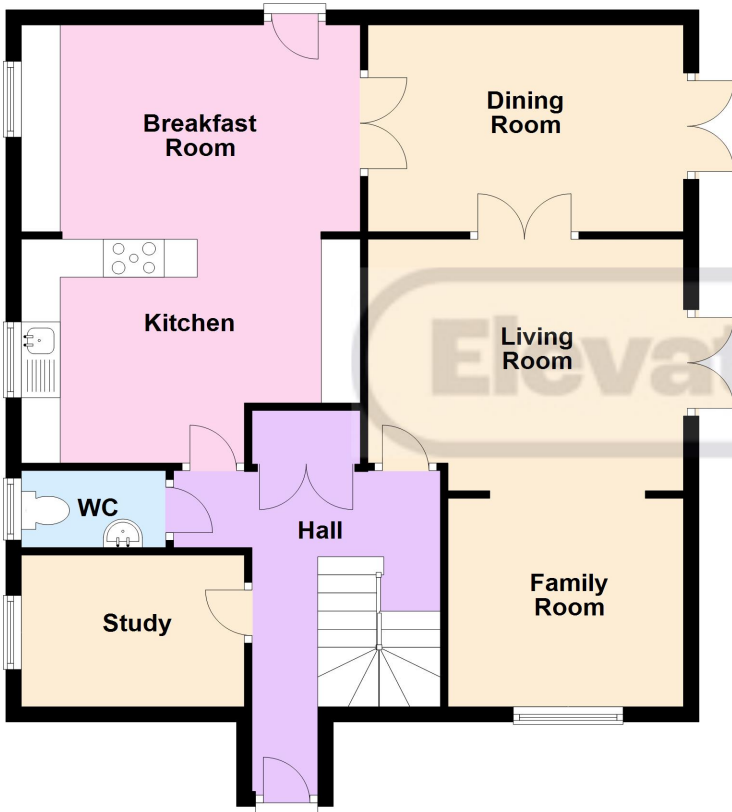
Bedroom Five - 3.69m x 2.00m (12'1" x 6'6") -

Family Bathroom -

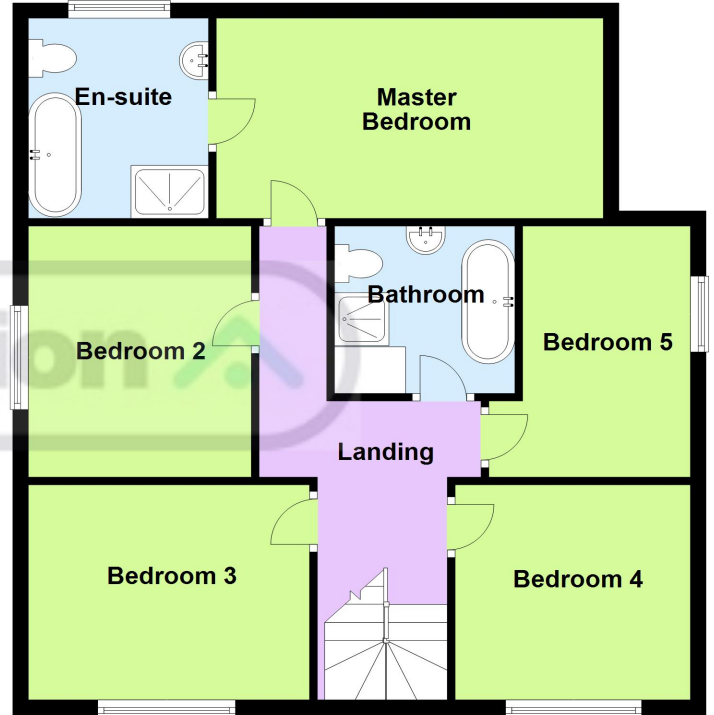
Disclaimer

Whilst we have endeavoured to prepare our sales particulars accurately none of the services, appliances or equipment have been tested. A buyer should satisfy themselves on such matters prior to purchase. Any measurements or distances mentioned in these particulars are for guide reference only. If such particulars are fundamental to a purchase, buyers should rely on their own enquiries. All enquiries should be directed to Elevation Estate Agents in the first instance.

Ground Floor



First Floor



Floor plans are for layout purposes only. Measurements are approximate and subject to inaccuracies
Plan produced using PlanUp.