



Two Bedroom Semi-Detached Bungalow  
St Margarets Drive, Wigmore, Gillingham, Kent, ME8 0NR

Guide Price £350,000  
Freehold

## St Margarets Drive, Wigmore, Gillingham, Kent, ME8 0NR

Guide Price £350,000

Freehold

### Description

\*\* Guide Price Of £350,000 - £375,000 \*\* This fantastic chain free semi-detached bungalow, in popular Wigmore is a must see! With a neutral décor throughout and new flooring in all rooms, you could simply unpack and enjoy your new home. The accommodation offers a spacious lounge overlooking the garden, a well-appointed shaker style kitchen, a shower room and two generous double bedrooms. Externally a large frontage with a lawned front garden, tandem driveway for multiple vehicles and side access to a fabulous east facing lawned garden with large patio, garage, storage shed, and established trees and shrubs. Close to local amenities, Hempstead Valley Shopping Centre and bus routes, this bungalow is in a great location. This property also has great potential to extend and really make it your own and put your own creative stamp on it. Don't miss out on your viewing, please call the Greyfox Sales and Lettings Team in Rainham to secure your viewing today.

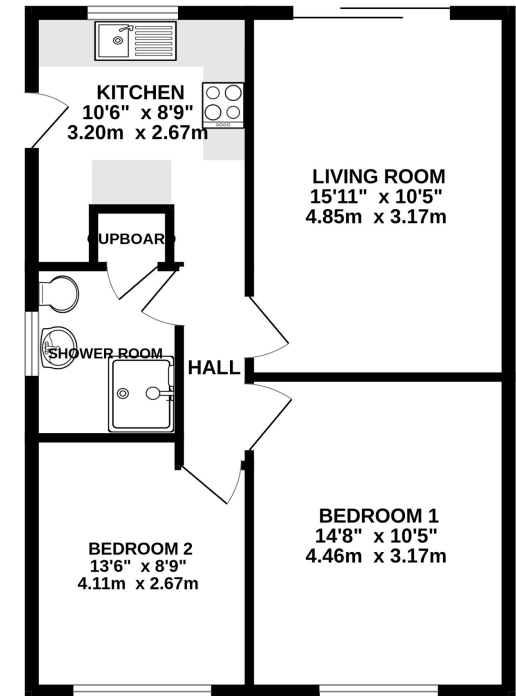
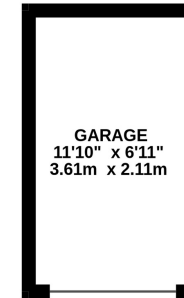
### Key Features

- Chain Free
- Semi Detached Bungalow in Popular Wigmore
- Further Potential to Extend (STRPP)
- Two Generous Double Bedrooms
- Driveway & Garage
- Spacious Lounge
- Close To Local Amenities and Transport Links
- East Facing Garden measuring approx 64ft x 27ft

### Local Area

Rainham in the Medway towns is located descending towards the banks of the river Medway, approximately 39 miles from London. The ancient Watling Street main road (A2) runs through the town with the M2 motorway on the southern edge with good links to the M25/M20. There are a good number of shops and facilities within the town, a mainline station and a selection of local schools including Rainham Mark Grammar School.

GROUND FLOOR  
657 sq.ft. (61.0 sq.m.) approx.



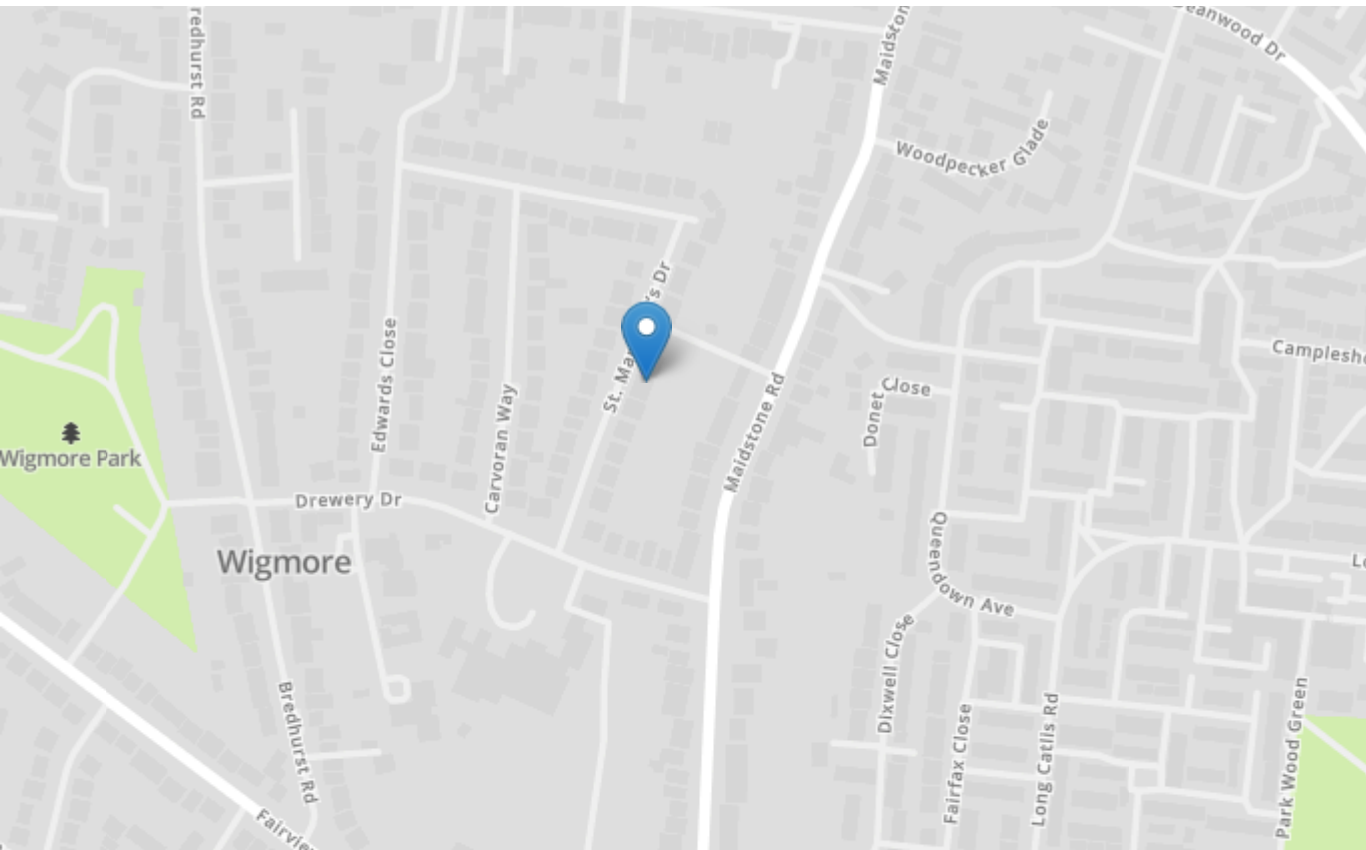
TOTAL FLOOR AREA : 657 sq.ft. (61.0 sq.m.) approx.


Whilst every attempt has been made to ensure the accuracy of the floorplan contained here, measurements of doors, windows, rooms and any other items are approximate and no responsibility is taken for any error, omission or mis-statement. This plan is for illustrative purposes only and should be used as such by any prospective purchaser. The services, systems and appliances shown have not been tested and no guarantee as to their operability or efficiency can be given.  
Made with Metropix ©2024



## Property Location

St Margarets Drive, Wigmore, Gillingham, Kent, ME8 0NR



Energy Efficiency Rating		Current	Potential
Very energy efficient - lower running costs			
(92+)	<b>A</b>		
(81-91)	<b>B</b>		
(69-80)	<b>C</b>		
(55-68)	<b>D</b>		
(39-54)	<b>E</b>		
(21-38)	<b>F</b>		
(1-20)	<b>G</b>		
Not energy efficient - higher running costs			
		69	89
England, Scotland & Wales		EU Directive 2002/91/EC 	

<b>Tenure</b>	Freehold
<b>Lease Term</b>	N/A
<b>Ground Rent</b>	N/A
<b>Service Charge</b>	N/A
<b>Local Authority</b>	Medway
<b>Council Tax</b>	Band C

### Greyfox Walderslade

Unit 2, Thetford House  
 Walderslade Village Centre  
 Walderslade Road  
 Chatham  
 Kent  
 ME5 9LR  
 Tel: 01634 672227 Email:  
 walderslade@greyfox.co.uk

### Greyfox Rainham

67C High Street  
 Rainham  
 Kent  
 ME8 7HS  
 Tel: 01634 377737 Email:  
 rainham@greyfox.co.uk

#### Agent Notes

These particulars are prepared as a general guide to a broad description of the property and should not be relied upon as a statement or representation of fact and do not constitute part of an offer or contract. The seller does not make or give nor do our employees or Greyfox have authority to make or give any representation or warranty to the property. We have not carried out a structural survey and the services, appliances and specific fittings have not been tested. All photographs, measurements, floorplans and distances referred to are given as a guide only and should not be relied upon for the purchase of carpets or any other fixtures or fittings. Lease details, service charges and ground rent (where applicable) and council tax are given as a guide only and should be checked and confirmed by you on inspection and your solicitor prior to exchange of contracts. If there are any points of particular importance to you we will be pleased to check the information for you and to confirm that the property remains available. This is particularly important should you be travelling some distance to view and where statements have been made by us to the effect that the information has not been verified. The copyright of all details, photographs and floorplans remain exclusive to Greyfox. For details of our privacy policy and referral fee arrangements with any of our selected partner companies please visit <https://www.greyfox.co.uk/legal/privacy> and <https://www.greyfox.co.uk/referral-fees>.