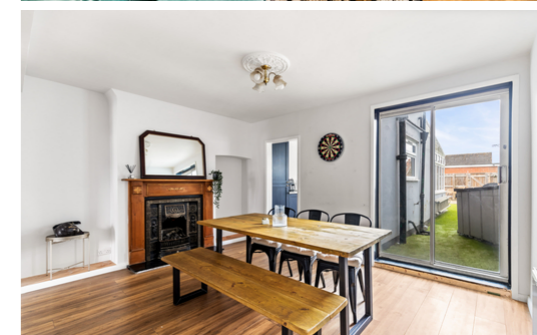


24 Park Road

Folkestone
CT19 4DG

£270,000 FREEHOLD

FOR SALE WITH BURNAP + ABEL... Welcome to this charming 2 bedroom period terraced house located on Park Road in the sought-after area of Cheriton, Near Folkestone. As you enter, you are greeted by a cozy lounge with an open fireplace, perfect for relaxing evenings at home. The dining room is ideal for hosting dinner parties and gatherings with loved ones. The modern kitchen is equipped with all the amenities you need to whip up delicious meals. The bathroom features a freestanding bath and a separate W.C., while the two double bedrooms offer ample space for rest and relaxation. Outside, the low maintenance rear garden provides a private oasis for outdoor entertaining or peaceful moments in nature. With off-road parking for two cars, convenience is at your doorstep. Don't miss out on this fantastic opportunity to call Park Road home - schedule a viewing today! Chain Free



Porch

Entrance Hall

Lounge

12' 11" x 11' 2" (3.94m x 3.40m)

Dining Room

14' 5" x 14' 0" (4.39m x 4.27m)

Kitchen

14' 1" x 8' 0" (4.29m x 2.44m)

Conservatory

9' 4" x 8' 2" (2.84m x 2.49m)

First Floor Landing

Bedroom One

14' 5" x 12' 11" (4.39m x 3.94m)

Bedroom Two

11' 3" x 10' 10" (3.43m x 3.30m)

W.C

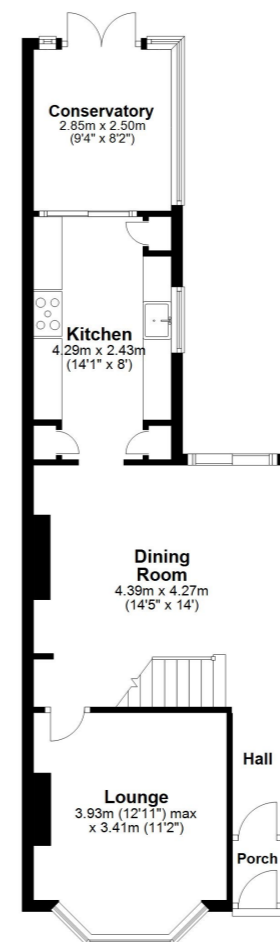
Bathroom

8' 3" x 7' 6" (2.51m x 2.29m)

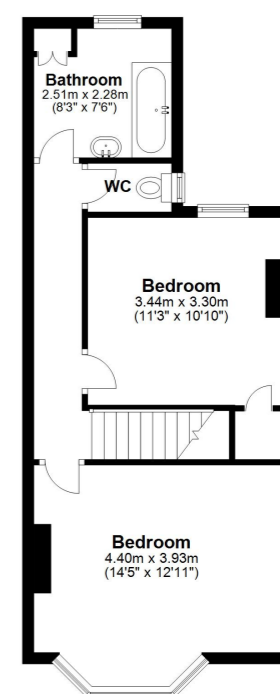
Rear Garden

Off Road Parking

Ground Floor
Approx. 52.2 sq. metres (561.5 sq. feet)



First Floor
Approx. 42.4 sq. metres (456.6 sq. feet)



Total area: approx. 94.6 sq. metres (1018.0 sq. feet)

Whilst every attempt has been made to ensure the accuracy of the floor plan contained here, measurements of doors, windows, rooms and any other items are approximate and no responsibility is taken for any error, omission or mis-statement. This plan is for illustrative purposes only and should be used as such by any prospective purchaser.
Plan produced using PlanUp.

