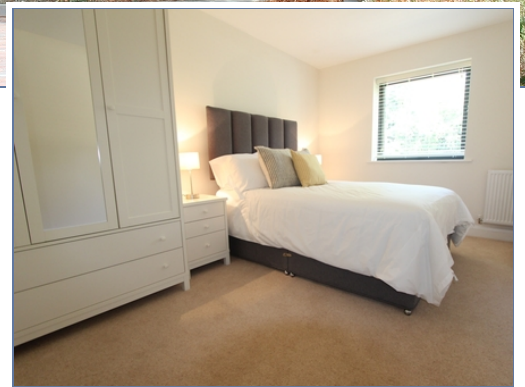




**84 Waterside house, Woodley Headland,
MILTON KEYNES, Buckinghamshire, MK6
3FE**

£925 pcm Not Applicable

- Fully furnished
- Waterfront Location
- Allocate parking space
- Excellent Views
- Good Access to A5
- EPC Rating C





Kitchen / Diner

6.43m x 3.47m (21' 1" x 11' 5")

Bedroom

4.37m x 3.14m (14' 4" x 10' 4")

Bathroom

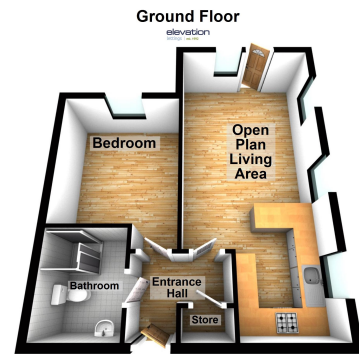
2.25m x 1.95m (7' 5" x 6' 5")

Disclaimer

Whilst we have endeavoured to prepare our sales particulars accurately none of the services, appliances or equipment have been tested. A buyer should satisfy themselves on such matters prior to purchase. Any measurements or distances mentioned in these particulars are for guide reference only. If such particulars are fundamental to a purchase, buyers should rely on their own enquiries. All enquiries should be directed to Elevation Estate Agents in the first instance.



Energy Efficiency Rating		Environmental Impact (CO ₂) Rating	
	Current	Potential	
Very energy efficient - lower running costs			
(92 to 100) A			
(81 to 91) B			
(69 to 80) C	79	79	79 79
(55 to 68) D			
(39 to 54) E			
(21 to 38) F			
(1 to 20) G			
Not energy efficient - higher running costs			
EU Directive 2002/91/EC			EU Directive 2002/91/EC
England, Wales & N.Ireland			England, Wales & N.Ireland



Floor plans are for layout purposes only
Plan produced using PlanUp.