

10 Boscombe Road

Folkestone
CT19 5BD

£400,000 FREEHOLD

DRAFT DETAILS...FOR SALE WITH BURNAP + ABEL... Burnap + Abel are delighted to offer this large four bedroom terraced house situated a five minute walk from the mainline railway station. The property is in our opinion in good decorative order and the accommodation is separated over three floors. The property offers a large lounge/diner, kitchen/breakfast room, family bathroom, separate WC and four bedrooms. Additional benefits include central heating, sash windows and private rear garden. For your chance to view call sole agent Burnap and Abel now on 01303 258590. This property is being sold with no onward chain.



Entrance Hall

Lounge/Dining Room

27' 3" x 11' 9" (8.31m x 3.58m)

Kitchen/Breakfast Room

22' 5" x 10' 8" (6.83m x 3.25m)

First Floor Landing

Bedroom One

15' 3" x 14' 7" (4.65m x 4.45m)

Bedroom Two

12' 4" x 9' 10" (3.76m x 3.00m)

Bathroom

8' 5" x 7' 10" (2.57m x 2.39m)

W.C

Second Floor Landing

Bedroom Three

15' 0" x 14' 5" (4.57m x 4.39m)

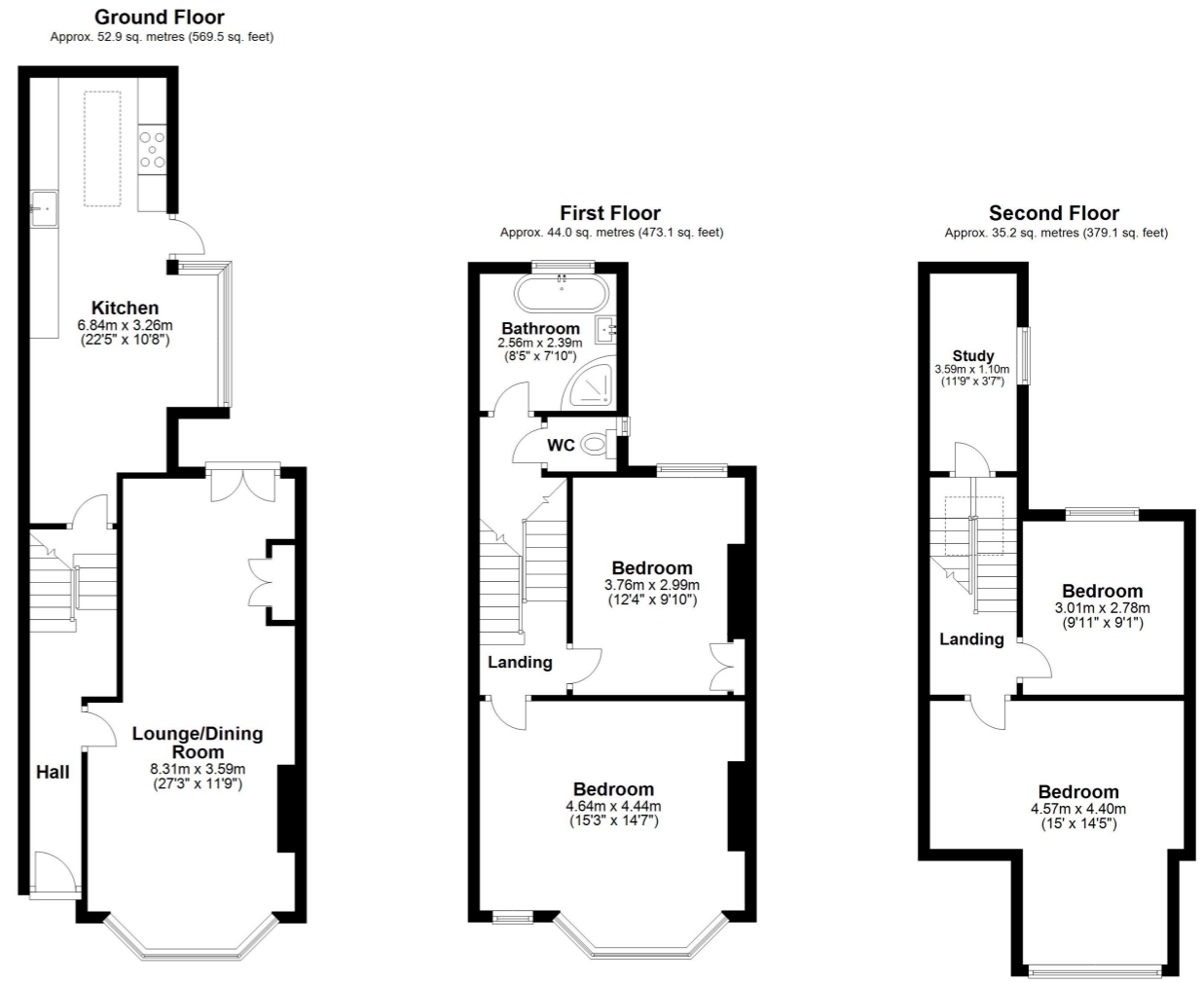
Bedroom Four

9' 11" x 9' 1" (3.02m x 2.77m)

Study/Storage

11' 9" x 3' 7" (3.58m x 1.09m)

Rear Garden



Total area: approx. 132.1 sq. metres (1421.7 sq. feet)

Whilst every attempt has been made to ensure the accuracy of the floor plan contained here, measurements of doors, windows, rooms and any other items are approximate and no responsibility is taken for any error, omission or mis-statement. This plan is for illustrative purposes only and should be used as such by any prospective purchaser. Plan produced using PlanUp.

