

24 Grosvenor Road, Petts Wood, Orpington, Kent, BR5 1QU

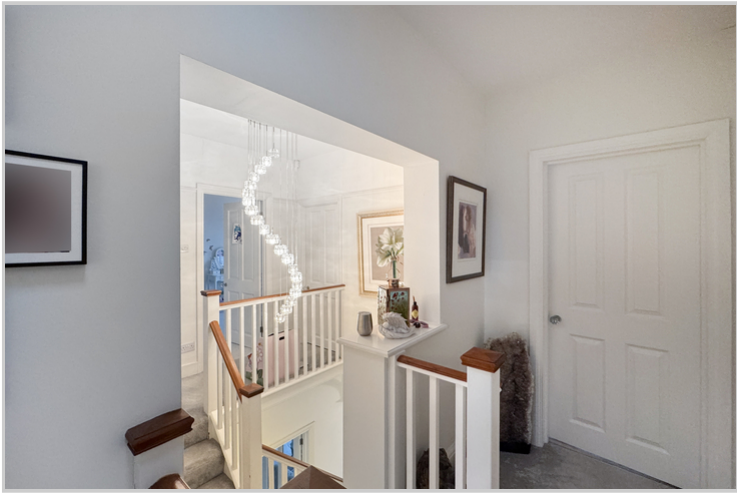
## Property Images











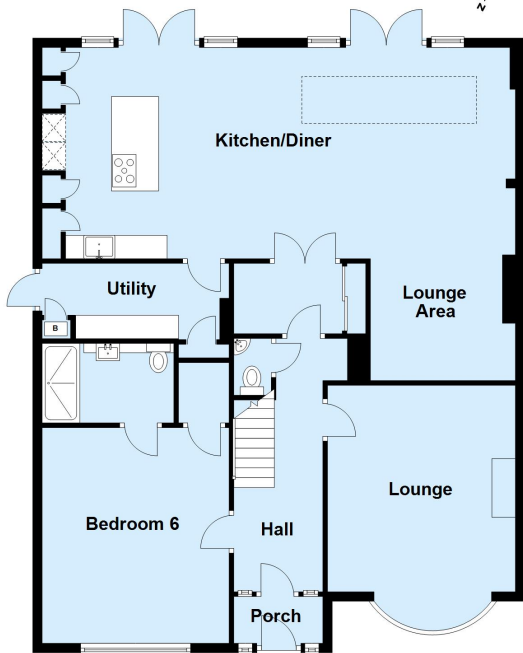






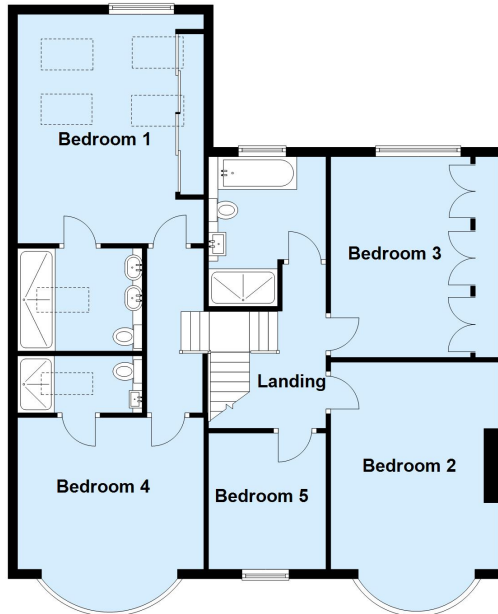
### Ground Floor

Approx. 123.9 sq. metres (1333.8 sq. feet)



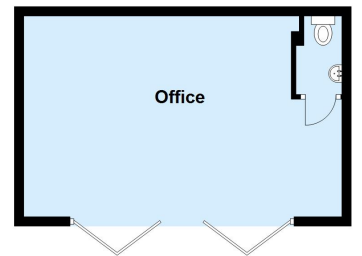
### First Floor

Approx. 103.3 sq. metres (1111.4 sq. feet)



### Outbuilding

Approx. 29.0 sq. metres (311.9 sq. feet)



Total area: approx. 256.1 sq. metres (2757.1 sq. feet)

This plan is for general layout guidance and may not be to scale.  
Plan produced using PlanUp.