



Longmead, Letchworth Garden City, Hertfordshire. SG6 4HW





3 Bedroom Semi-Detached House

£575,000 Freehold

This immaculate three-bedroom semi-detached home boasts stylish interiors and a welcoming atmosphere. Features include a spacious driveway, a lush garden perfect for relaxation, and a charming summerhouse ideal for entertaining or as a home office. Ideal for families seeking comfort and elegance in a well-maintained, attractive property.

- Semi detached family home
- Beautifully presented throughout
- Driveway for two vehicles and garage
- Freehold
- Established rear garden
- Fitted shutter blinds to living room and bedrooms
- Short walk to town centre and station
- Located in a sought after area
- Three bedrooms
- EPC rating D. Council tax band D



Ground Floor

Entrance Hall:

Laminate flooring. Upvc door to front with side window. Radiator. Stairs leading up. Storage cupboard.

Living Room:

Abt. 12' 5" x 11' 3" (3.78m x 3.43m) Laminate flooring. Bay window to front with fitted wooden shutter blinds. Fireplace with log burner. Radiator.

Dining Room:

Abt. 11' 8" x 11' 3" (3.56m x 3.43m) Tiled floor. French doors leading on to garden patio. Radiator. Open plan to kitchen.

Kitchen:

Abt. 11' 6" x 6' 3" (3.51m x 1.91m) Tiled floor. Two windows to garden aspect. Worktops with a range of wall and base mounted units with lights to base of units. Integrated dishwasher, sink and drainer, gas hob, double oven and extractor. Space for fridge freezer. Tiled splashback.

First Floor

Bedroom One:

Abt. 12' 5" x 11' 3" (3.78m x 3.43m) Laminate flooring. Radiator. Window to front aspect with fitted wooden shutter blinds.

Bedroom Two:

Abt. 11' 8" x 9' 5" (3.56m x 2.87m) Laminate flooring. Radiator. Window to rear aspect with fitted wooden shutter blinds.

Bedroom Three:

Abt. 9' 1" x 6' 3" (2.77m x 1.91m) Laminate flooring. Radiator. Window to front aspect with fitted wooden shutter blinds.

Bathroom:

Tiled floor. Tiled walls. Privacy window to rear. Three piece suite comprising 'b' shaped bath with wall mounted shower and glass screen, pedestal sink and WC. Storage cupboard.

Outside

Front Garden:

Established shrubs dividing from next door. Block paved pathway leading to front door. Raised lawn with flower

Rear Garden:

Stunning sunken patio area with steps leading up to lawn. Established borders. Side access and side entrance to garage. Decked seating area to rear. Summer house currently utilised as a home office with scope for further improvement.

Garage:

Brick built garage with pull up door and side entrance with windows on to garden.

Driveway:

Block paved driveway directly to the side of the property. Parking for two cars.

Agents Note:

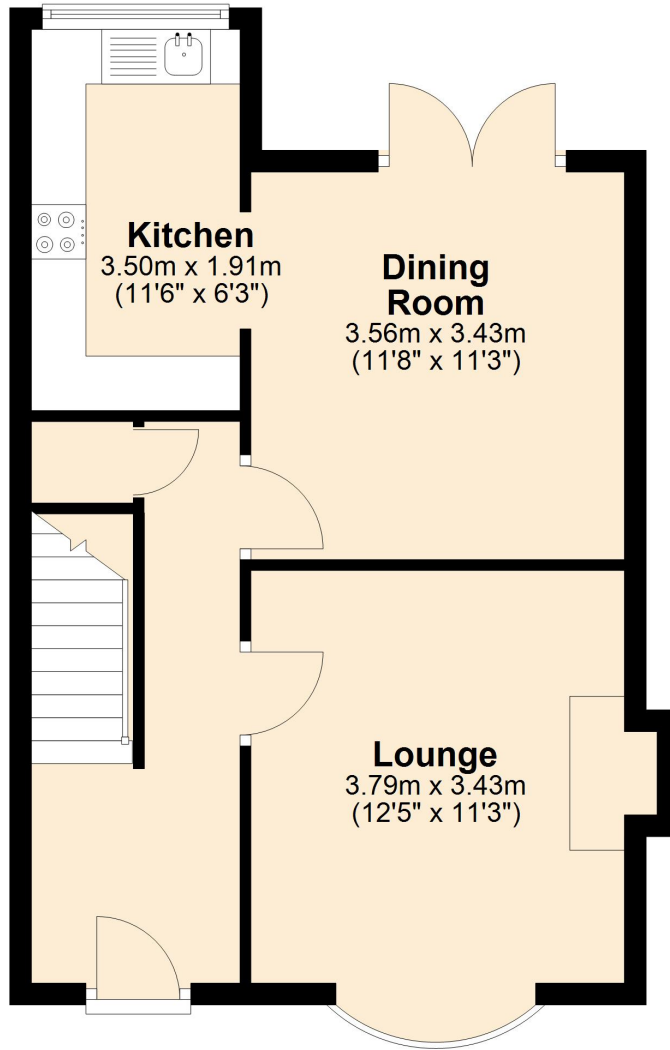
Draft particulars yet to be approved by the vendor and may be subject to change.



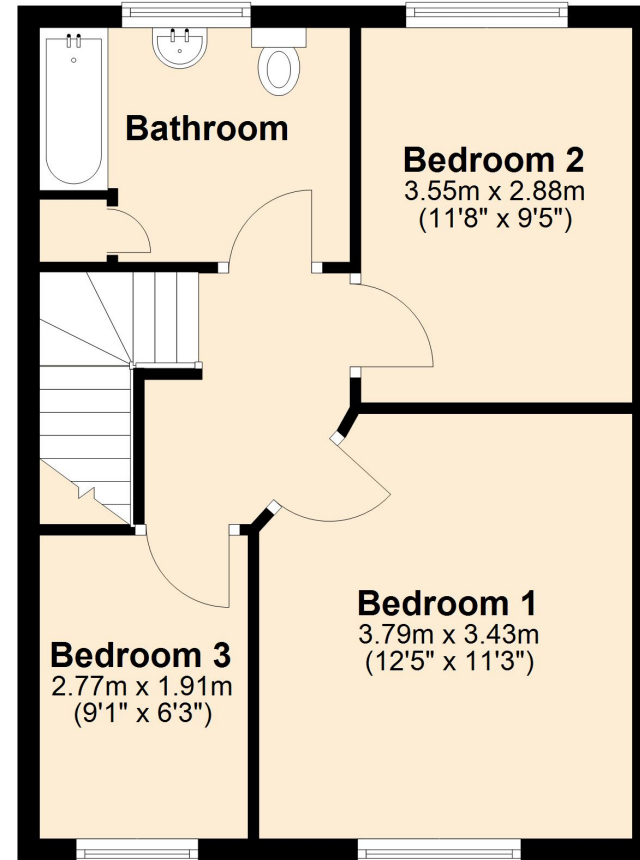


These particulars are a guide only and do not constitute an offer or a contract. The floor plan is for identification purposes only and not to scale. All measurements are approximate and should not be relied upon if ordering furniture, white goods and flooring etc. We have presented the property as we feel fairly describes it but before arranging a viewing or deciding to buy, should there be anything specific you would like to know about the property please enquire. Satchells have not tested any of the appliances or carried out any form of survey and advise you to carry out your own investigations on the state, condition, structure, services, title, tenure, and council tax band of the property. Some images may have been enhanced and the contents shown may not be included in the sale. Satchells routinely refer to 3rd party services for which we receive an income from their fee. If you would like us to refer you to one of these services please ask one of our staff who will pass your details on. We advise you check the availability of the property on the day of your viewing.

Ground Floor



First Floor



For illustrative purposes only - NOT TO SCALE - Measurements shown are approximate. The size and position of doors, windows, appliances and other features are approximate.
Plan produced using PlanUp.