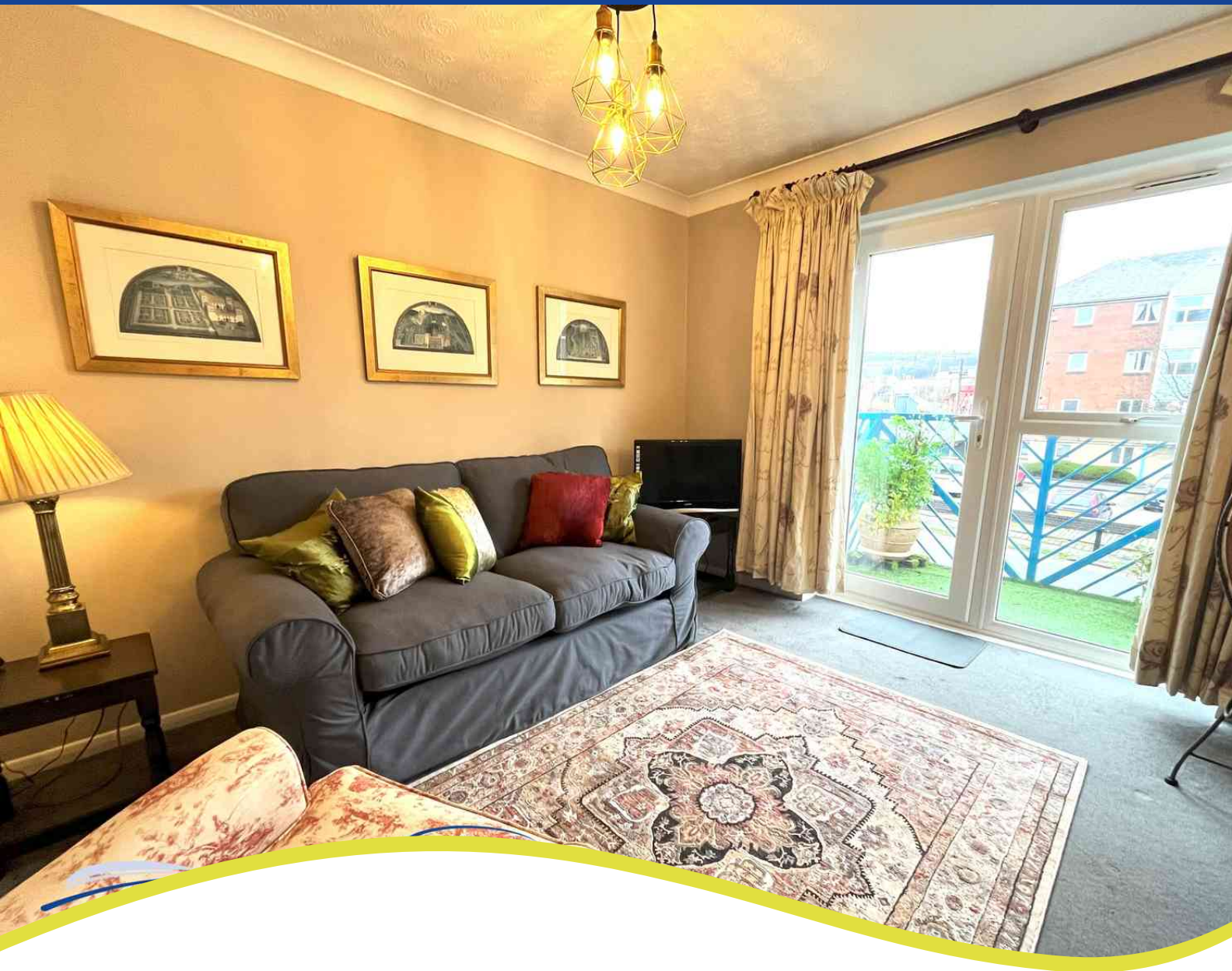


TO LET

£850 pcm



Catrin House, Maritime QuarterSWANSEASA1

- Elevated Ground Floor
- Electric Heating
- One Bedroom Apartment
- Allocated Parking



Bay Estate Agents Ltd
29, Camona Drive, Maritime Quarter, Swansea, SA1 1YJ

01792 645566
mail@bayestateagents.com

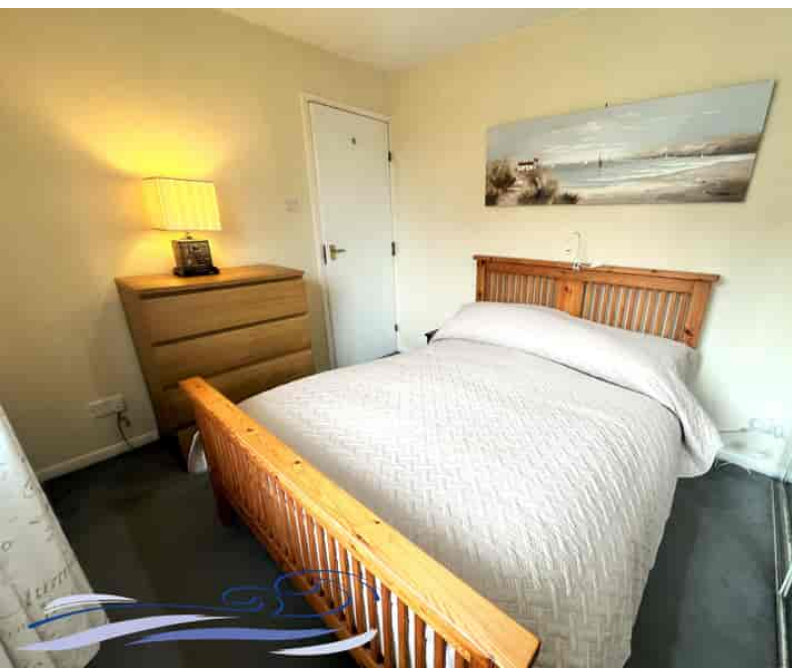


PROPERTY DESCRIPTION

* Available April 2025*

Bay is delighted to offer for rental, this well-presented, elevated ground floor apartment with private entrance. the property briefly comprises an entrance hallway, double bedroom, fitted kitchen, and bathroom with shower. The living room has access to a sit-out balcony with partial Marina views. Allocated parking. Electric heating. Available on a Let Only basis (Landlord Managed). Viewing is highly recommended!

Security Deposit: £1,275 (£1,700 for student let) Term: 6 Months (+) Council tax: Band D Requested Holding Deposit: £195 EPC Rating: C.



ROOM DESCRIPTIONS

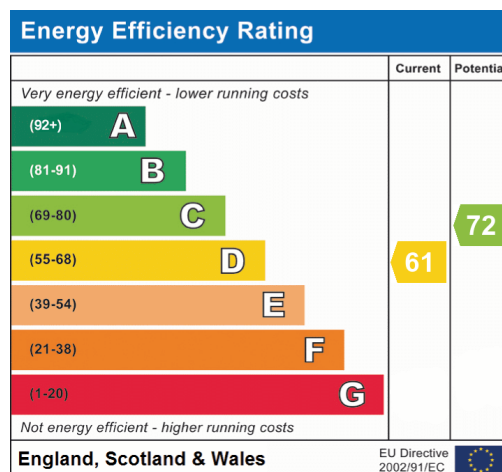
Lounge (Reception)

Bathroom

Bedroom

Kitchen





Bay Estates & Lettings Agents

29, Camona Drive, Maritime Quarter, Swansea, SA1 1YJ
01792 645566
mail@bayestateagents.com