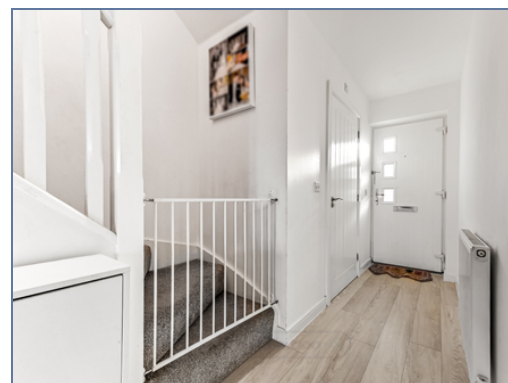




**338 Burney Drive, Glebe Farm, Milton
Keynes, Buckinghamshire, MK17 8SQ**

£375,000 Freehold

- Rear off road parking for 2 cars
- Modern three-bedroom end-of-terrace home
- Well-planned layout offering contemporary living
- Downstairs cloakroom, perfect for guests
- Stylish kitchen/diner with selected integrated appliances
- Low-maintenance rear garden
- Principal bedroom with en-suite shower room
- Close to local schools, shops and amenities
- Easy access to A421, M1 and Milton Keynes city centre
- Move-in ready condition





Situated in the highly sought-after Glebe Farm development in Milton Keynes, this beautifully presented three-bedroom end-of-terrace home offers modern living in a popular and well-connected location. Glebe Farm is known for its family-friendly environment, excellent local amenities, well-regarded schools, and convenient access to the A421, M1, Kingston District Centre and Milton Keynes city centre, making it ideal for commuters and growing families alike.

Upon arrival, you are welcomed by a spacious and inviting entrance hallway, providing access to all ground-floor accommodation. To the right is a convenient downstairs cloakroom, perfect for guests. The generous lounge offers an excellent space for relaxing or entertaining, filled with natural light.

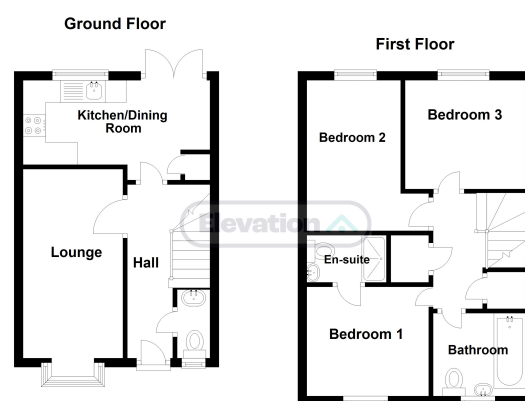
The ground floor is completed by a modern kitchen/diner, fitted with selected integrated appliances including a separate oven and worktop hob. Patio doors open directly onto the low-maintenance rear garden, creating a seamless indoor-outdoor flow and offering rear access to off-road parking for two vehicles.

To the first floor, the property boasts three well-proportioned bedrooms. The principal bedroom benefits from a private en-suite shower room, while the remaining two double bedrooms are ideal for a growing family, guests or home working. A contemporary three-piece family bathroom completes the accommodation.

This fantastic home combines modern design, practical living space and a desirable location, making it an excellent choice for first-time buyers, families or investors alike.

Disclaimer

Whilst we have endeavoured to prepare our sales particulars accurately none of the services, appliances or equipment have been tested. A buyer should satisfy themselves on such matters prior to purchase. Any measurements or distances mentioned in these particulars are for guide reference only. If such particulars are fundamental to a purchase, buyers should rely on their own enquiries. All enquiries should be directed to Elevation Estate Agents in the first instance.



Floorplans are for layout purposes only. Measurements are approximate and subject to inaccuracies. Plan produced using PlanUp.