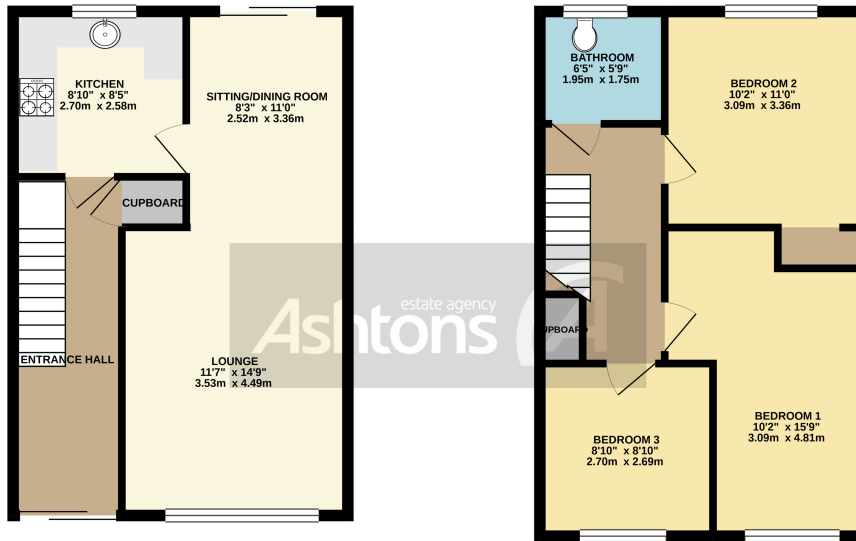




*Oxmead Close, Padgate, Warrington.*  
*£160,000*

THREE BEDROOMS | NEW DOUBLE GLAZING | POPULAR LOCATION | IDEAL PROPERTY  
TO MAKE YOUR OWN | NO ONWARDS CHAIN | SOLD AS SEEN |





TOTAL FLOOR AREA - 885 sq.ft. (82.2 sq.m.) approx.

Whilst every attempt has been made to ensure the accuracy of the floorplans contained here, measurements of doors, windows, rooms and any other items are approximate and no responsibility is taken for any error, omission or mis-statement. This plan is for illustrative purposes only and should be used as such by any prospective purchaser. The services, systems and appliances shown have not been tested and no guarantee as to their operability or efficiency can be given.  
Made with Metropix ©2021

**\*\*MAKE THIS PROPERTY YOUR OWN\*\*** Situated on this popular development is this three-bedroom property which offers off-road parking for two vehicles, a quiet position, and a chance to finish the property to your taste. The property has partially been updated and comes to the market as seen. Internally there is an entrance hallway with double glazed patio doors, kitchen fitted with a matching range of units, lounge, and dining room. On the first floor, there are three generous sized bedrooms and a bathroom with only a wc currently fitted. There will be gardens to the front and rear, with access to the rear for off-road parking.



Contact your local office to arrange a viewing:

- Padgate: 01925 479334
- Great Sankey: 01925 454300
- Winwick: 01925 232146
- Stockton Heath: 01925 453400
- St.Helens: 01744 754120
- Wigan: 01942 498862
- Culcheth: 01925 764744
- Ashton-In-Makerfield: 01942 364446
- Newton-Le-Willows: 01925 907770
- Commercial Office: 01925 907709
- Lettings Head Office: 01925 873533
- Financial Services: 01925 221234

**Viewing Arrangements**

Viewing is strictly by appointment only through Ashtons Estate Agency.

**Disclaimer Property Details**

These particulars, whilst being believed to be accurate are set out as a general outline only for guidance and do not constitute any part of an offer or contract. Intending purchasers should not rely on them as statements of representation of fact, but must satisfy themselves by inspection or otherwise as to their accuracy. We have not carried out a detailed survey nor tested the services, appliances and specific furnishings. The measurements given are approximate. No person in this firm's employment has the authority to make or give any representation or warranty in respect of the property.

All details, photographs and floorplans are the copyright of Ashtons Estate Agency.



*How much you can borrow?*  
Speak to a mortgage expert in your local office.

**Ashtons Financial Services**