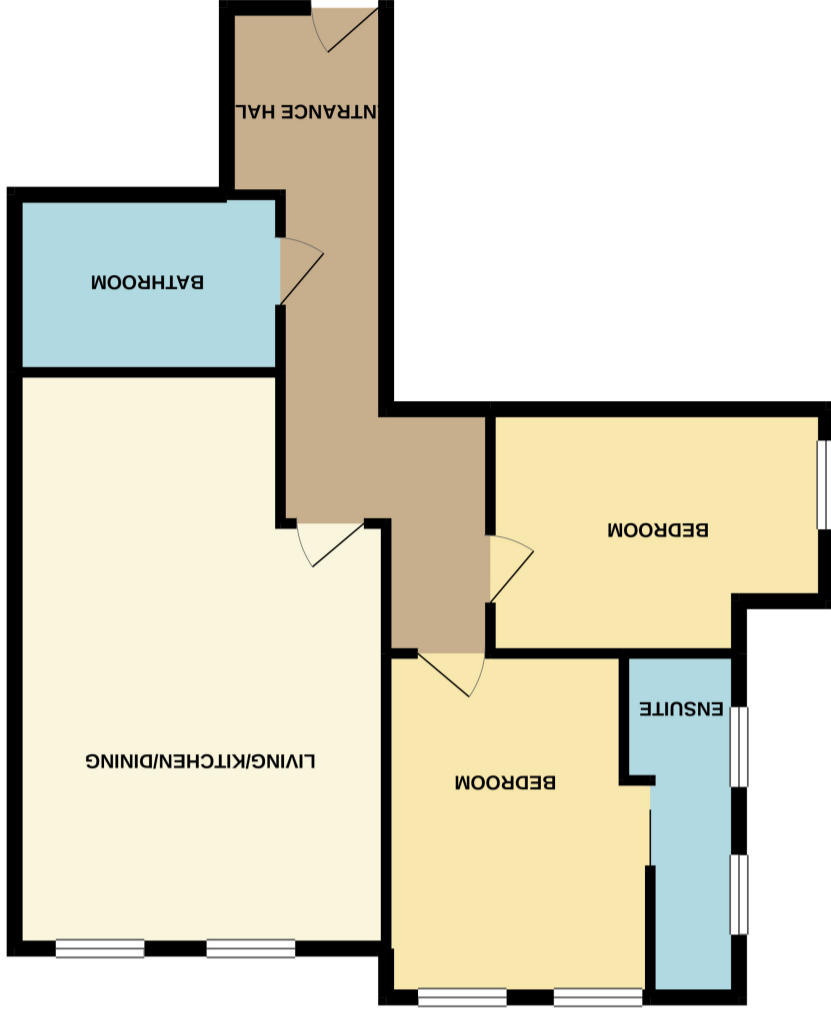


What every attempt has been made to ensure the accuracy of the floorplan contained here, measurements of doors, windows, rooms and other are approximate and no responsibility is taken for any errors or omissions or mis-statement. This plan is for illustrative purposes only and should be used as such by any prospective purchaser. The services, systems and appliances shown have not been tested and no guarantee as to their quality or efficiency can be given.



GROUND FLOOR
797 sq.ft. (74.0 sq.m.) approx.





Living/Dining/Kitchen

6.5m x 4.2m (21' 4" x 13' 9") Max.

Bedroom One

3.7m x 3.0m (12' 2" x 9' 10")

En-Suite

3.7m x 1.5m (12' 2" x 4' 11") Max.

Bedroom Two

3.8m x 3.2m (12' 6" x 10' 6") Max.

Bathroom

3.0m x 2.0m (9' 10" x 6' 7")



PLEASE NOTE: The measurements that have been quoted are approximate and strictly for guidance only. All fittings, fixtures, services and appliances have not been tested and no guarantee can be given that they are in working order. The particulars are believed to be correct but their accuracy is not guaranteed and they do not constitute an offer or form part of a contract. The images displayed are for information purposes only and it cannot be inferred that any items shown will be included in the property.

