

SOLD



Park Road, Northaw, Potters Bar, Hertfordshire, EN6

£449,950

- **THREE BEDROOM HOME**
- **SEPARATE DINING ROOM**
- **QUIET CUL-DE-SAC**
- **FRONT AND REAR GARDENS**
- **DUAL ASPECT LIVING ROOM**
- **STUNNING COUNTRYSIDE VIEWS**
- **DOUBLE GLAZED THROUGHOUT**
- **RECENT COMBINATION BOILER**

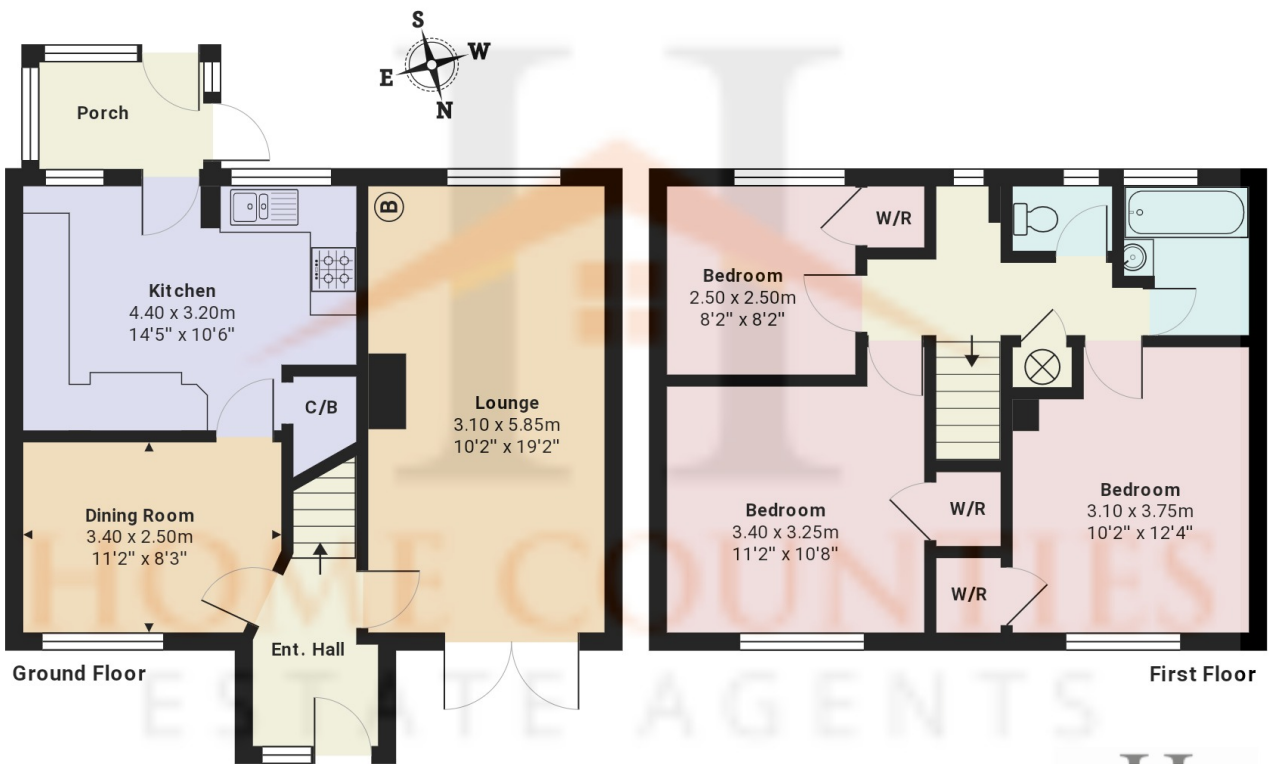
Park Road, Northaw, Potters Bar, Hertfordshire, . EN6

£449,950 Freehold

This delightful larger than average three bedroom family home is ideally situated within a quiet cul-de sac in Northaw with stunning picturesque views over Hemps Hill. The property benefits from both front and rear gardens, upon entering the home you are welcomed by a large entrance hallway with a central staircase, large dual aspect lounge to one side and dining room and kitchen to the other.

The first floor consists of three bedrooms, the master and second bedroom both with stunning views to wake up to, a single bedroom and a family bathroom with separate WC.

Externally there is ample parking within the cul-de-sac, front and rear gardens and is situated within close distance to Cuffley & Crews Hill Stations for easy access to central London in under 35 minutes.



Park Road, Hertfordshire EN6

Total Area: 96.7 m² ... 1041 ft²

All measurements are approximate and for display purposes only

