



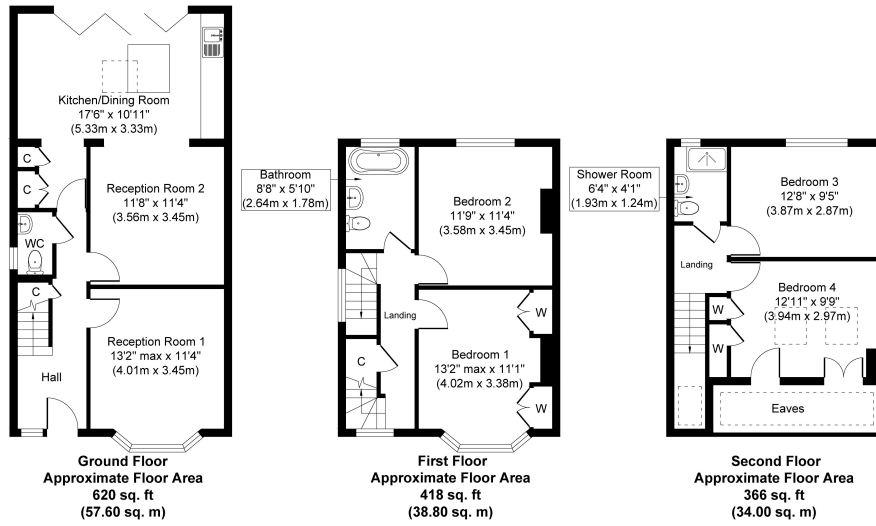
Pavilion Gardens, Staines-upon-Thames, Surrey, TW18

1LS

STUNNING FOUR BEDROOM SEMI-DETACHED PROPERTY SITUATED ALONG THIS MUCH SOUGHT AFTER ROAD IDEALLY LOCATED FOR EASY ACCESS TO STAINES TOWN CENTRE, MAINLINE TRAIN STATION, LOCAL SHOPS & SCHOOLS. The property benefits from a spacious lounge, luxury kitchen/diner with Bi-fold doors to rear garden, family room, downstairs W.C, four double bedrooms, two modern bath/shower rooms, large secluded rear garden and off-street parking. Viewings Highly Recommended!

ROOM DESCRIPTIONS

FLOORPLAN



Whilst every attempt has been made to ensure the accuracy of the floor plan contained here, measurements of doors, windows, rooms and any other items are approximate and no responsibility is taken for any error, omission, or mis-statement. The measurements should not be relied upon for valuation, transaction and/or funding purposes. This plan is for illustrative purposes only and should be used as such by any prospective purchaser or tenant. The services, systems and appliances shown have not been tested and no guarantee as to their operability or efficiency can be given.
Copyright V360 Ltd 2025 | www.houseviz.com

127a, High Street, Staines-upon-Thames, TW18 4PD

01784 451458

staines@gregory-brown.co.uk