



10 City Wharf, Atlantic Wharf Cardiff, . CF10 4HG

- WATERSIDE DEVELOPMENT
- TWO DOUBLE BEDROOMS
- THIRD FLOOR APARTMENT
- LIFT TO ALL FLOORS
- DESIGNATED PARKING SPACE
- ENERGY RATING B
- COUNCIL TAX BAND D
- NO CHAIN



PROPERTY DESCRIPTION

NO CHAIN

Part of the ever-popular Atlantic Wharf development, this third floor executive apartment boasts a wealth of natural light.

Accommodation comprises a large open-plan kitchen/reception room, with small balcony off and views over neighbouring water. Large kitchen has integrated appliances and a variety of base/wall units . Accommodation also provides a spacious double bedroom with ensuite and dressing room, with another double bedroom and separate modern shower room.To be sold with furniture included .

Further benefits include intercom entry system, one allocated parking space and the property is less than 10 minutes walk from the City Centre. Cardiff Bay is also within easy reach, and there is also easy access to the M4.

This property is subject to ESW1 works that are ongoing via the Welsh Government - no time scale is set on this. Interested parties are advised to check with their lenders before arranging to view.



ROOM DESCRIPTIONS

Entrance/Hallway

Lounge/Diner

Larger than average reception room with wood flooring. Floor to ceiling windows double aspect.

Kitchen

Modern light wood kitchen, breakfast bar, included appliances. Patio Doors to large balcony overlooking the river.

Shower Room

Large corner shower cubicle, w.c and hand wash basin.

Bedroom One

Double bedroom with window to rear, carpeted flooring and doors to en-suite and the walk-in wardrobe.

En Suite Bathroom

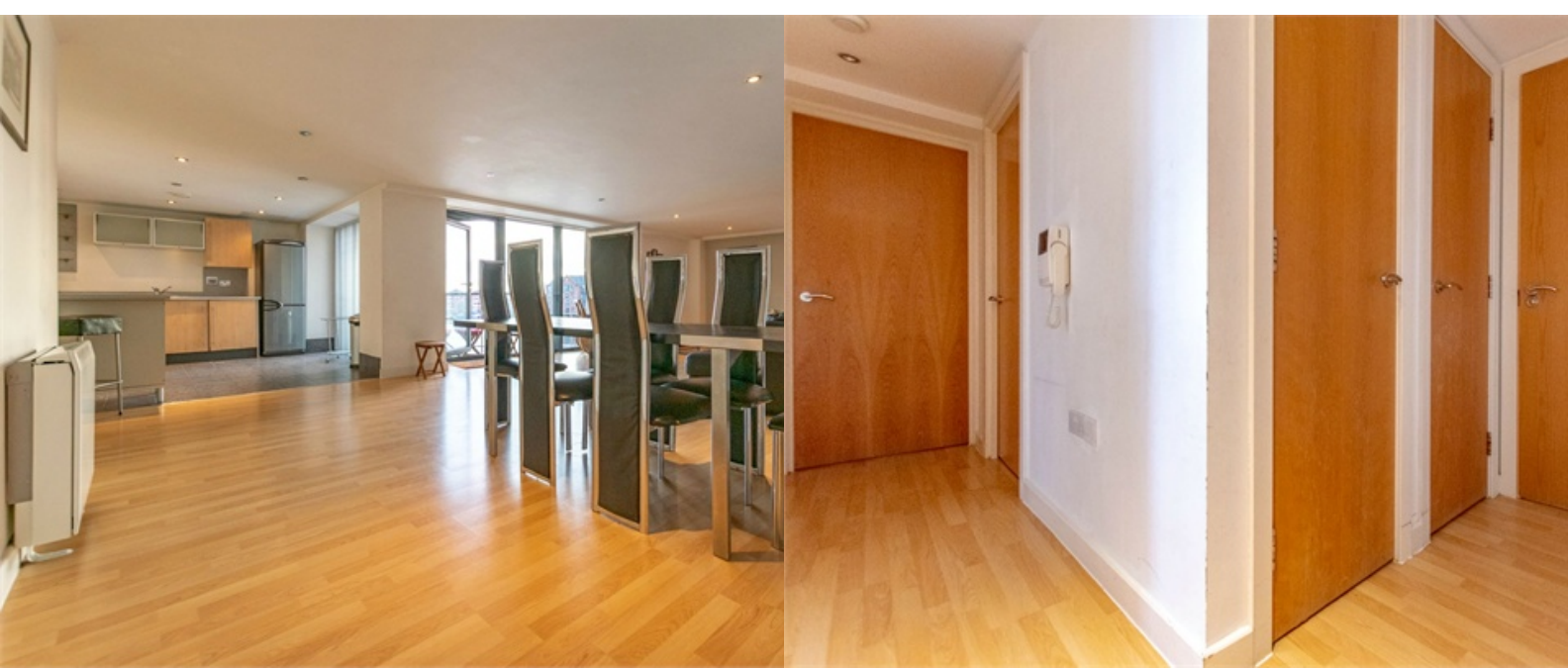
Bathroom with w.c, hand wash basin and bath with shower over. Entered from the first double bedroom.

Bedroom Two

Second double bedroom with carpeted flooring and window to rear.

Balcony

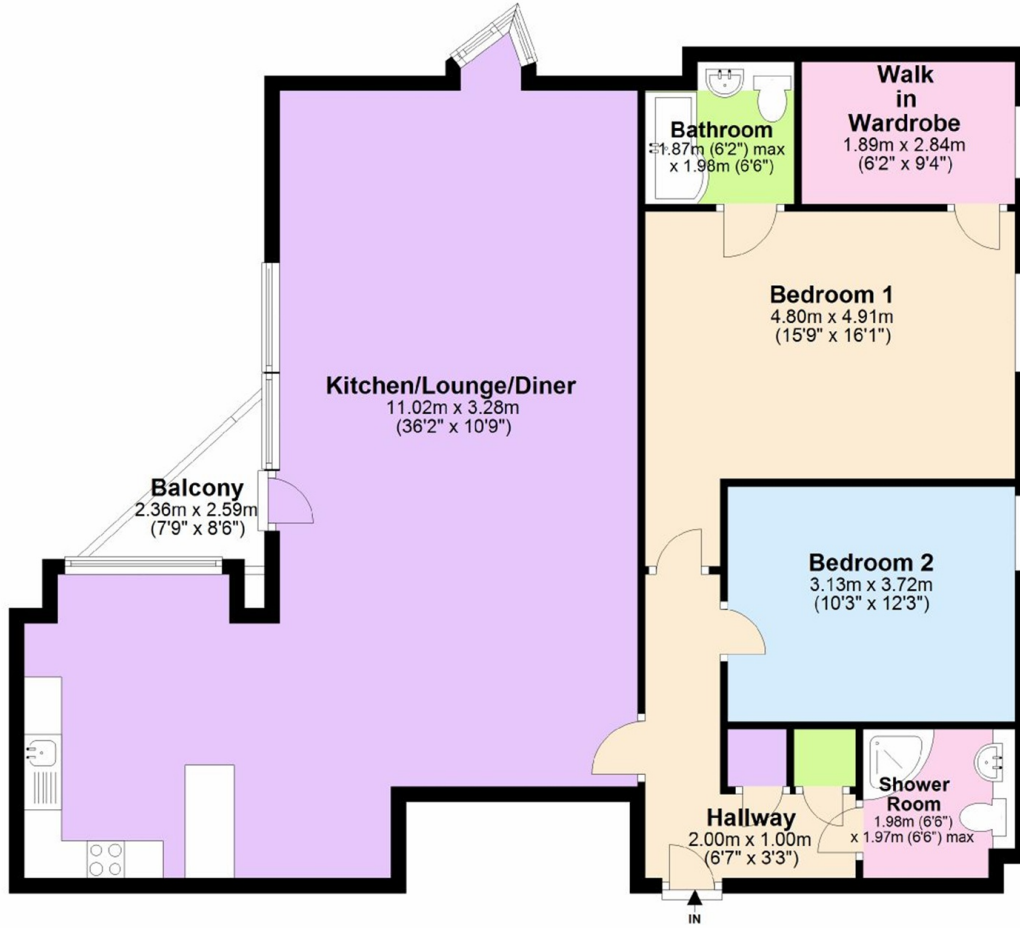
Lovely balcony accessed from the lounge with fantastic water views.



FLOORPLAN



Over One Floor



The floorplans are for display purposes only and should not be used for measurements of floor coverings, curtains or fixtures fittings
Plan produced using PlanUp.