

THE LEASOWES

£367,500

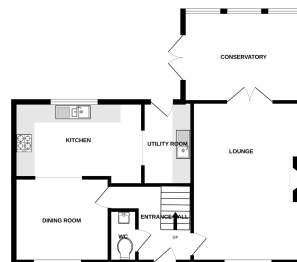


Key Features

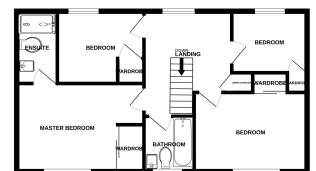
- ✓ Immaculately Presented House.
- ✓ Two Reception Rooms.
- ✓ Conservatory.
- ✓ Four Bedrooms.
- ✓ Two Bathrooms.
- ✓ Garden.
- ✓ Garage and Ample Off Road Parking.



GROUND FLOOR
688 sq. ft. (63.9 sq.m.) approx.



1ST FLOOR
562 sq. ft. (52.2 sq.m.) approx.



TOTAL FLOOR AREA: 1250 sq. ft. (116.1 sq.m.) approx.
Made with Merapex ©2023