



BarrettMove



13 Beechtree Avenue, Marlow, Buckinghamshire SL7 3NH
Offers Over £750,000 - Freehold



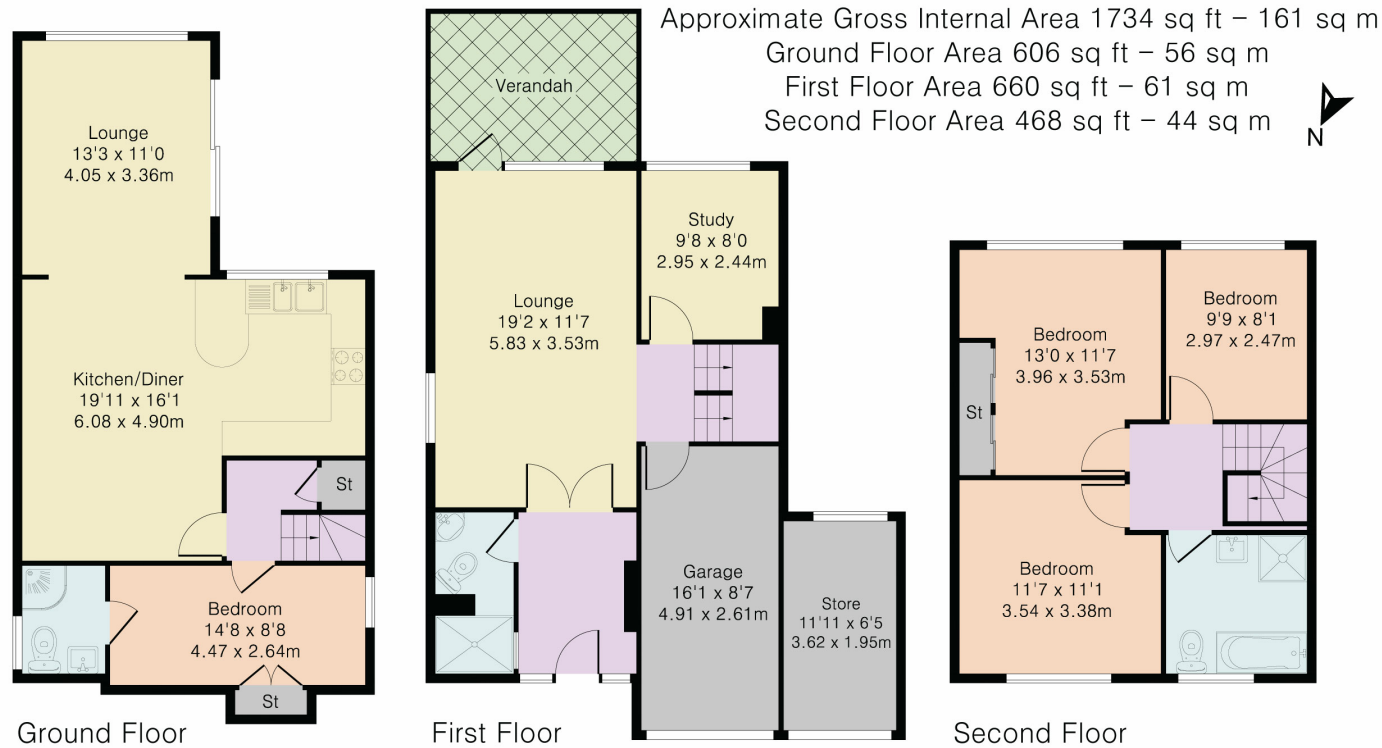
PROPERTY SUMMARY

Barrett Move is delighted to market this three storey, deceptively spacious, four bedroom detached house on a popular road in Marlow Bottom.

POINTS OF INTEREST

- Three storey detached house
- Deceptively spacious
- Three bathrooms
- South facing garden with a view
- Garage, off street parking and electric charger point
- Flexible accommodation for family life
- Good decorative order
- Highly recommended for viewing
- Short walk to Burford School
- Close to village amenities and woodland walks





Although Pink Plan Ltd ensures the highest level of accuracy, measurements of doors, windows and rooms are approximate and no responsibility is taken for error, omission or misstatement. These plans are for representation purposes only as defined by RICS code of measuring practise. No guarantee is given on total square footage of the property within this plan. The figure icon is for initial guidance only and should not be relied on as a basis of valuation.

Energy Efficiency Rating		Current	Potential
<i>Very energy efficient - lower running costs</i>			
(92+)	A		
(81-91)	B		
(69-80)	C		
(55-68)	D		
(39-54)	E		
(21-38)	F		
(1-20)	G		
<i>Not energy efficient - higher running costs</i>			
		66	76
England, Scotland & Wales			
EU Directive 2002/91/EC			