



Day & Co
ESTATE AGENTS

28 Cavendish Street
Keighley
BD21 3RG



11 Apsley Terrace, Oakworth,
Keighley, West Yorkshire, BD22
7HF

£80,000

T: 01535 664609

W: www.dayandcoestateagents.co.uk

E: keighley@dayandcoestateagents.co.uk

- END TERRACE (BACK/BACK)
- ELEVATED POSITION
- EPC RATING D

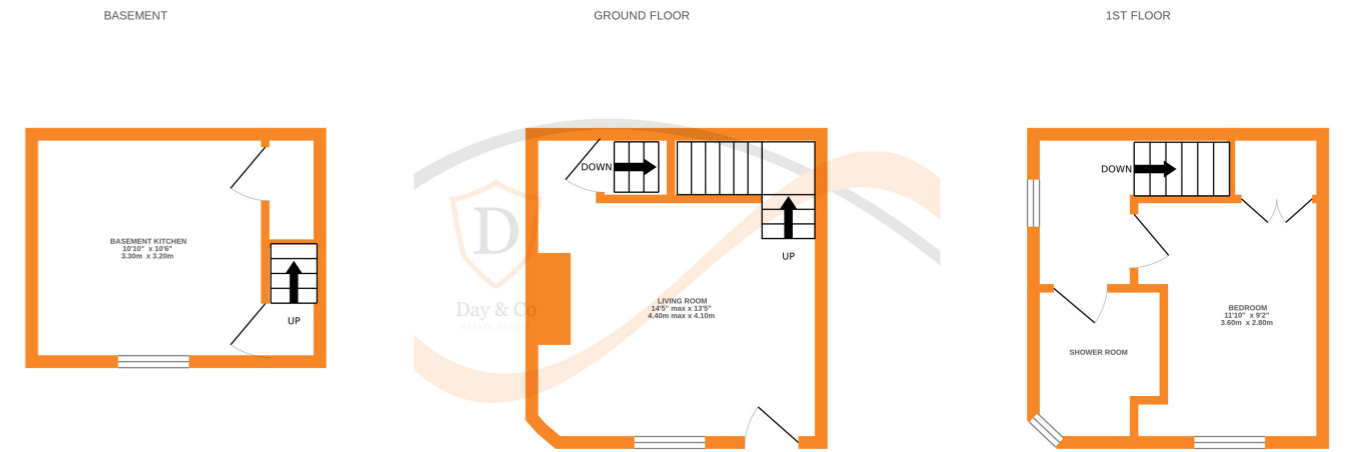
- ONE BEDROOM
- NO CHAIN

SUMMARY

** A ONE BEDROOM END STONE TERRACE (BACK/BACK) SITUATED IN AN ELEVATED POSITION ON KEIGHLEY ROAD IN THE POPULAR VILLAGE OF OAKWORTH, ACCOMMODATION OVER THREE FLOORS, GAS CENTRAL HEATING, DOUBLE GLAZING, SMALL FRONT YARD, NO CHAIN, EPC RATING D **

FULL DESCRIPTION

Offered for sale is this one bedroom, end stone terrace house (Back/Back) situated in an elevated position on Keighley Road in the popular village of Oakworth. In brief the accommodation comprises of a living room with window and entrance door, stairs to the upper floor and basement kitchen. The basement kitchen has a range of units, sink, window to the front. Upper Floor - Landing, Bedroom with built in cupboard, window to the front, shower room comprising of a shower, w.c., wash basin, window. Gas Central Heating & Double Glazing. Outside small yard area to the front. No Chain. EPC Rating D



Whilst every attempt has been made to ensure the accuracy of the floorplan contained here, measurements of doors, windows, rooms and any other items are approximate and no responsibility is taken for any error, omission or mis-statement. This plan is for illustrative purposes only and should be used as such by any prospective purchaser. The services, systems and appliances shown have not been tested and no guarantee as to their operability or efficiency can be given.
Made with Metropix ©2023