

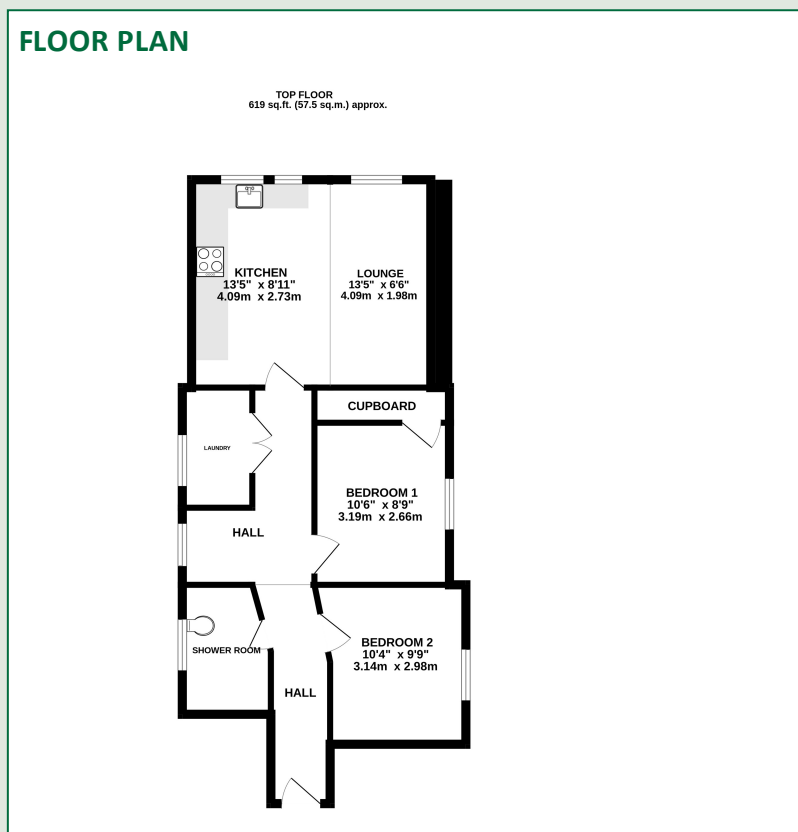
TO LET
£1,150 pcm



DESCRIPTION

An amazing top floor Grade II listed apartment situated in the heart of Newbury town centre with lovely views of the church within walking distance of the railway station.

The property has been fully refurbished to a very high standard in a contemporary style retaining some original features including wall and ceiling timbers. The accommodation comprises communal entrance with security intercom system reception hallway with storage cupboard and bin store, solid oak balustrade and turned stair case leading to the first floor. Good size hallway with double utility cupboard and washing machine, kitchen fitted with a range of top quality cabinets with with ample work surface with built-in single oven, ceramic hob and extractor which is open plan to the lounge, two bedrooms and a shower room



- Two centre location
- Walking distance to Newbury railway station
- Gas fired central heating
- Two bedroom second floor apartment
- Laundry cupboard
- Lots of storage
- Recently refurbished
- Open plan living
- Features
- White wood included

