



Maples Court

26 Maples Court | Bedford Road | Hitchin | SG5 1HF

www.stonegate-estates.co.uk



MAPLES COURT

Property Description

A well presented one double bedroom first floor retirement apartment within this well regarded McCarthy and Stone private development. Maples Court is centrally placed within half a mile of the town centre and adjacent to a large Waitrose store with café.

The apartment benefits from new flooring throughout and has views overlooking the gardens and Old Park Road along with the Butts Close open space close by. There is a communal lounge and in-house Development Manager together with a guest suite and communal laundry room.

The area is well served with bus services and other facilities; including library, churches and the swimming centre.

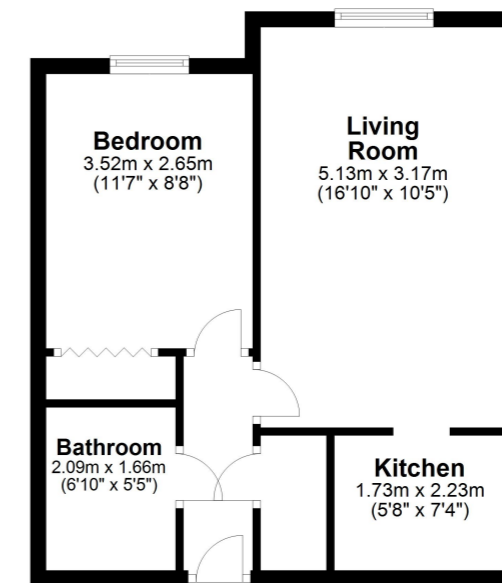


£135,000 Leasehold



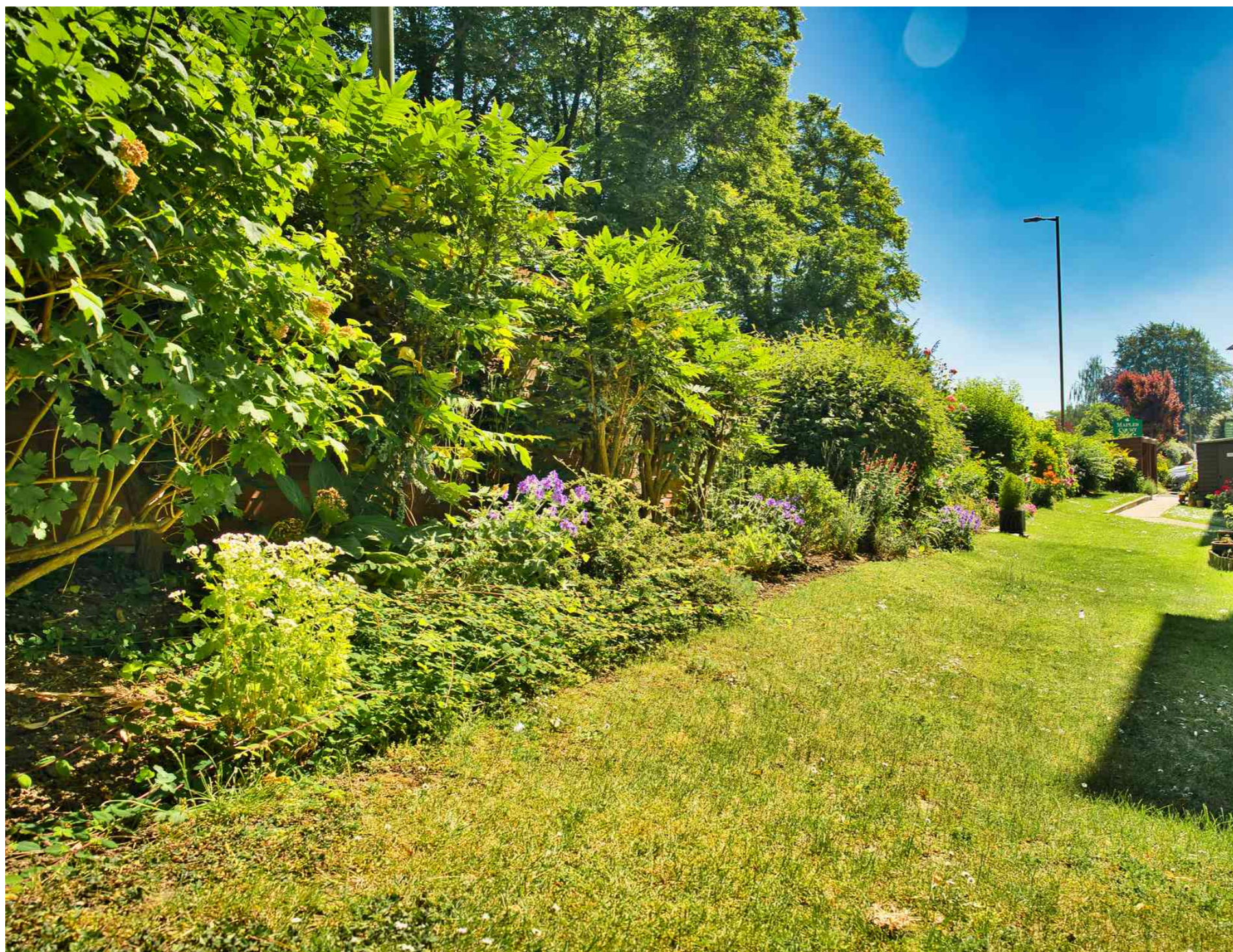
Floor Plan

Approx. 39.6 sq. metres (426.2 sq. feet)



Total area: approx. 39.6 sq. metres (426.2 sq. feet)

All measurements shown are approximate and for guidance only. Garages and workshops are not included in any gross floor areas unless integral to the main building where they will be included.
Plan produced using PlanUp.



- ANY REASONABLE OFFER CONSIDERED FOR QUICK SALE
- One Bedroom Retirement Apartment
- No Onward Chain
- Newly Fitted Flooring
- First Floor
- Lift to all Floors
- Communal Gardens
- Communal Laundry
- Parking
- Development Manager on Site

EPC Rating: B

Stonegate Estate Agents

01462 438979

sales@stonegate-estates.co.uk | www.stonegate-estates.co.uk

