





367a Staines Road West, Ashford, Surrey TW15 1RP
£244,950 - Leasehold



PROPERTY DESCRIPTION

First floor two bedroom maisonette which is well presented by the current owners and offers spacious accommodation comprising of a large lounge/diner, good size kitchen with breakfast bar, two double bedrooms, modern fitted bathroom and a separate WC. The property is conveniently located for local shops and public transport and also benefits from a long lease over 100 years.

POINTS OF INTEREST

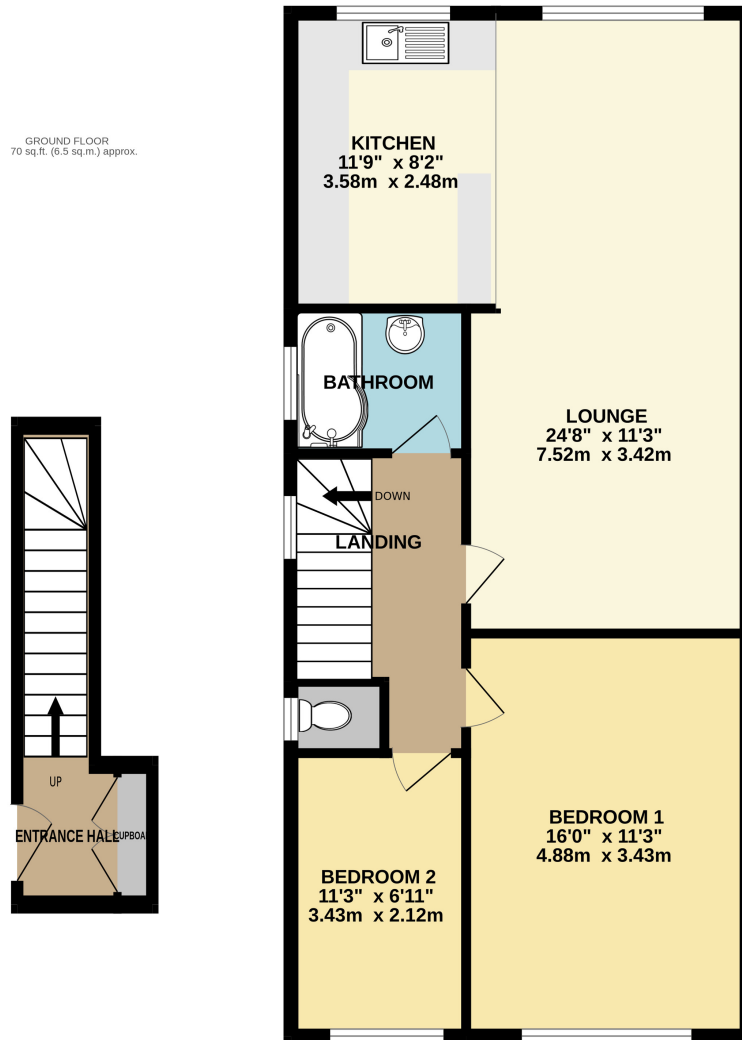
- First floor maisonette
- Well presented
- spacious living accommodation
- Two double bedrooms
- modern bathroom
- large kitchen
- long lease
- Close to shops





1ST FLOOR
737 sq.ft. (68.4 sq.m.) approx.

GROUND FLOOR
70 sq.ft. (6.5 sq.m.) approx.



TOTAL FLOOR AREA: 807 sq.ft. (75.0 sq.m.) approx.

Whilst every attempt has been made to ensure the accuracy of the floorplan contained here, measurements of doors, windows, rooms and any other items are approximate and no responsibility is taken for any error, omission or mis-statement. This plan is for illustrative purposes only and should be used as such by any prospective purchaser. The services, systems and appliances shown have not been tested and no guarantee as to their operability or efficiency can be given.
Made with Metropix ©2023

Energy Efficiency Rating		Current	Potential
<i>Very energy efficient - lower running costs</i>			
(92+)	A		
(81-91)	B		
(69-80)	C		80
(55-68)	D		
(39-54)	E	42	
(21-38)	F		
(1-20)	G		
<i>Not energy efficient - higher running costs</i>			
England, Scotland & Wales		EU Directive 2002/91/EC	