



35 Northfield Road
Hounslow, TW5 9JQ



Telephone: 02085707900

Email: info@blueestateagents.co.uk



Northfield Road

Hounslow, TW5 9JQ

Stunning Extended Family Home in Heston – Northfield Road

Welcome to this exceptional property located in the heart of Heston, just off the bustling Cranford Lane. Perfectly situated, this home offers easy access to a variety of public transport links, making commutes to central London and beyond a breeze. With Heathrow Airport just a short drive away, and convenient access to the M4, A312, and A4, travel has never been so effortless. Families will appreciate the proximity to numerous Ofsted-rated schools and local amenities, ensuring a vibrant community lifestyle.

As you step through the impressive double door entrance into the spacious lobby, you are greeted by a large through lounge that floods the space with natural light and fresh air. This open area is perfect for entertaining or simply relaxing with family. The ground floor also boasts thoughtfully designed storage compartments, providing ample space to keep your home organized. The extended kitchen and diner, expanded by six meters, offers a fantastic space for culinary creativity and family gatherings, making it the heart of the home. Additionally, the convenience of a ground floor shower and WC suite adds

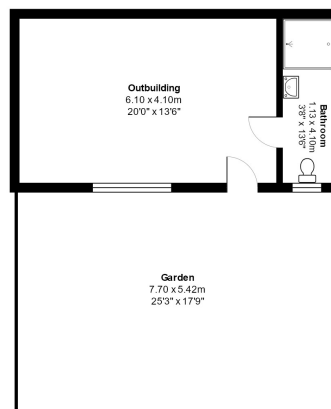
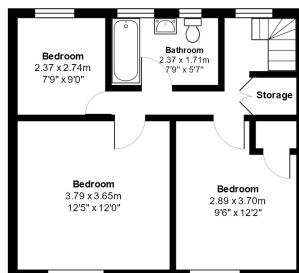
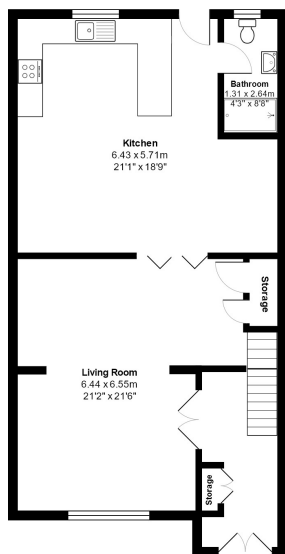


Blue Estate Agents
.co.uk



Blue Estate Agents
.co.uk





Total Area: 151.2 m² ... 1627 ft² (excluding garden)
All measurements are approximate and for display purposes only



Blue Estate Agents
315 Vicarage Farm Road, Hounslow
Greater London
TW5 0DR