

*An Equestrian smallholding set in approximately 7 acres with farmhouse, menage and stables.
Aeron Valley, West Wales.*



Maesyronnen, Llangeitho, Tregaron, Ceredigion. SY25 6TT.

£495,950

REF: A/5264/LD

- *** An Equestrian holding *** A well presented 4 bedroomed, 2 bathroomed farmhouse *** A comprehensive range of stables (5 stables and 1 tack room) *** A silicone and sand menage with designated store area *** Extending to approximately 7 acres with well drained paddocks
- *** Useful hard standing turn out and yard area with lighting *** Track access to all paddocks for ease of transportation *** Well kept enclosed garden areas *** The perfect Equestrian holding on the fringes of the popular Village Community of Llangeitho within the beautiful Aeron Valley
- *** Picturesque rural position yet convenient to the nearby Towns of Tregaron, Lampeter and Aberaeron *** A country smallholding offering great opportunities



LAMPETER
12, Harford Square, Lampeter,
Ceredigion, SA48 7DT
Tel: 01570 423623
lampeter@morgananddavies.co.uk



ABERAERON
4, Market Street, Aberaeron,
Ceredigion, SA46 0AS
Tel: 01545 571 600
aberaeron@morgananddavies.co.uk



CARMARTHEN
11, Lammas St, Carmarthen,
Carmarthenshire, SA31 3AD
Tel: 01267 493444
carmarthen@morgananddavies.co.uk

LOCATION



Located in the upper Aeron Valley, 5 miles from the Market Town of Tregaron, 10 miles from the University Town of Lampeter, 14 miles South from the University Town Coastal Resort and Administrative Centre of Aberystwyth, within easy reach of the Georgian and Harbour Town of Aberaeron and the Cardigan Bay Coast, and located in delightful rural surroundings yet easily accessible to the Village of Llangeitho with a Village Store, Cafe, Public House and Places of Worship.

GENERAL DESCRIPTION

Here lies a well equipped Equestrian holding in all set in approximately 7 acres. The property itself has been refurbished in recent years and now offers a comfortable Family home with 4 bed roomed, 2 bathroomed accommodation.

It sits within its own grounds with well maintained walled garden areas and a large gravelled driveway. To the rear of the property lies the stable block with five stables and one tack room leading out onto the turnout area and the 40' x 20' silicone and sand menage.

The land, which is sloping in nature, is well drained and easily accessible via the tracks which is perfect for any Equestrian holding.

The current Vendors have maintained the property well over the years and it has been a perfect Equestrian holding for themselves.



THE ACCOMMODATION

The accommodation at present offers more particularly the following.

FRONT ENTRANCE PORCH

With UPVC front entrance door and tiled flooring.

LIVING ROOM

25' 5" x 15' 2" (7.75m x 4.62m). With a large open fireplace housing a cast iron wood burning stove with an Oak beam over sitting on a quarry tiled hearth, open tread staircase leading to the first floor accommodation with understairs storage cupboard.



LIVING ROOM (SECOND IMAGE)

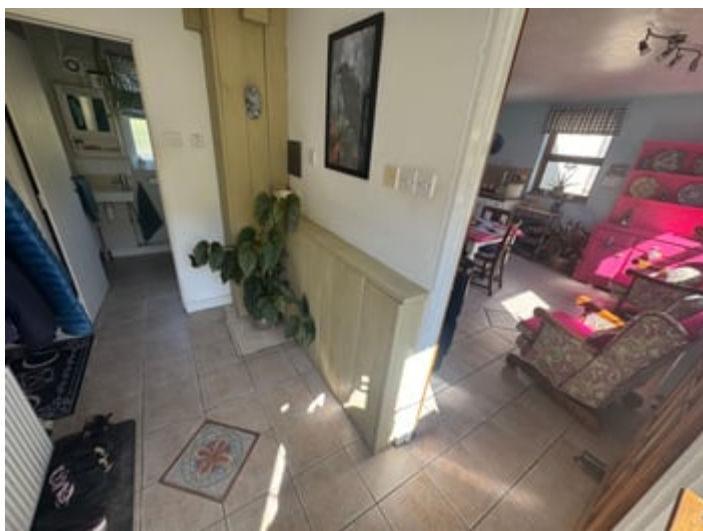


LIVING ROOM (THIRD IMAGE)



RECEPTION HALL

With UPVC side entrance door, radiator and tiled flooring.



SHOWER ROOM

5' 3" x 5' 3" (1.60m x 1.60m). With shower cubicle, low level flush w.c., wash hand basin and radiator.



KITCHEN

14' 5" x 13' 10" (4.39m x 4.22m). A farmhouse style fitted Kitchen with a range of wall and floor units with work surfaces over, stainless steel sink and drainer unit, plumbing for automatic washing machine and tumble dryer, radiator, oil fired Stanley running the heating, hot water and cooking purposes, triple aspect windows enjoying fine views over the menage, stables and the Aeron Valley.



KITCHEN (SECOND IMAGE)



FIRST FLOOR

GALLERIED LANDING

With access to the loft space. This is a substantial and functional space and is boarded and insulated.



BEDROOM 3

16' 7" x 6' 9" (5.05m x 2.06m). With radiator.



BEDROOM 4

7' 8" x 6' 5" (2.34m x 1.96m). With radiator.



BEDROOM 2

14' 10" x 10' 2" (4.52m x 3.10m). With radiator and double aspect windows.



REAR LANDING

With linen cupboard.

BATHROOM

8' 9" x 5' 3" (2.67m x 1.60m). A modern 3 piece suite comprising of a panelled bath with shower attachment, low level flush w.c., radiator, pedestal wash hand basin.



VIEW FROM BATHROOM



PRINCIPLE BEDROOM 1

14' 4" x 14' 2" (4.37m x 4.32m). Currently utilised as a workshop area (but could easily be re-introduced as the Principle Bedroom) with fitted work bench and shelving, built-in cupboard/wardrobes and double aspect windows enjoying great views over the menage.



EXTERNALLY

GARDEN

A well maintained garden located to the front and side of the property being laid mostly to lawn with delightful seating and

outdoor dining area providing a great outlook and a delightful entrance to the main farmhouse.



GARDEN (SECOND IMAGE)



GARDEN (THIRD IMAGE)



STABLE BLOCK

Having a gated access point onto the turn out area that leads onto the paddock and menage.



STABLE BLOCK (SECOND IMAGE)



TACK ROOM

15' 0" x 9' 0" (4.57m x 2.74m).



STABLE 1

14' 6" x 11' 3" (4.42m x 3.43m). With mains electricity and lighting.

STABLE 2

15' 9" x 14' 6" (4.80m x 4.42m). With lighting.

STABLE 3

13' 4" x 12' 8" (4.06m x 3.86m). With lighting.



STABLE 4/FOALING STABLE

20' 3" x 12' 4" (6.17m x 3.76m). With lighting.



STABLE 5

12' 8" x 14' 2" (3.86m x 4.32m). With lighting.



PARKING AND DRIVEWAY

To the rear of the stables lies a vehicular road access point with a further parking area for a Horse box/Hors lorry, etc.. This area is gated and provides secondary security for the Animals.

WOOD SHED

With lighting.

HARD STANDING TURN OUT/YARD AREA

Offering access to the menage, the paddocks and the rear entrance lane and with mains lighting.



MENAGE

40' 0" x 20' 0" (12.19m x 6.10m). With a 10' x 20' designated store area, silicone and sand with rubber chip surface and with mains lighting.



MENAGE (SECOND IMAGE)



METAL STORE SHED

16' 0" x 8' 0" (4.88m x 2.44m). Useful outdoor equipment storage facility.



ORCHARD

Mature Raspberry canes, Blackcurrant fruit bushes and maturing Apple and Plum trees. A POLY TUNNEL (in need of renewal) and an area used as a Kitchen garden.

THE LAND

We are informed in all the property extends to approximately 7 ACRES that is split into five grazing paddocks. The land enjoys all weather access leading from the yard onto all of the paddocks. All of the paddocks have mature tree lined boundaries and are boundary fenced. The property as a whole is the perfect Equestrian holding offering good grazing, school and stables.

We are informed the land is well draining & doesn't get boggy or wet in bad weather.



LAND (SECOND IMAGE)



LAND (THIRD IMAGE)**LAND (FOURTH IMAGE)****POSITION OF PROPERTY****AERIAL VIEW****AGENT'S COMMENTS**

An exciting opportunity awaits. A significant Equestrian holding with great facilities.

TENURE AND POSSESSION

We are informed the property is of Freehold Tenure and will be vacant on completion.

COUNCIL TAX

The property is listed under the Local Authority of Ceredigion County Council. Council Tax Band for the property - 'C'.

MONEY LAUNDERING REGULATIONS

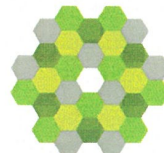
The successful Purchaser will be required to produce adequate identification to prove their identity within the terms of the Money Laundering Regulations. Appropriate examples include Passport/Photo Driving Licence and a recent Utility Bill. Proof of funds will also be required or mortgage in principle papers if a mortgage is required.

Services

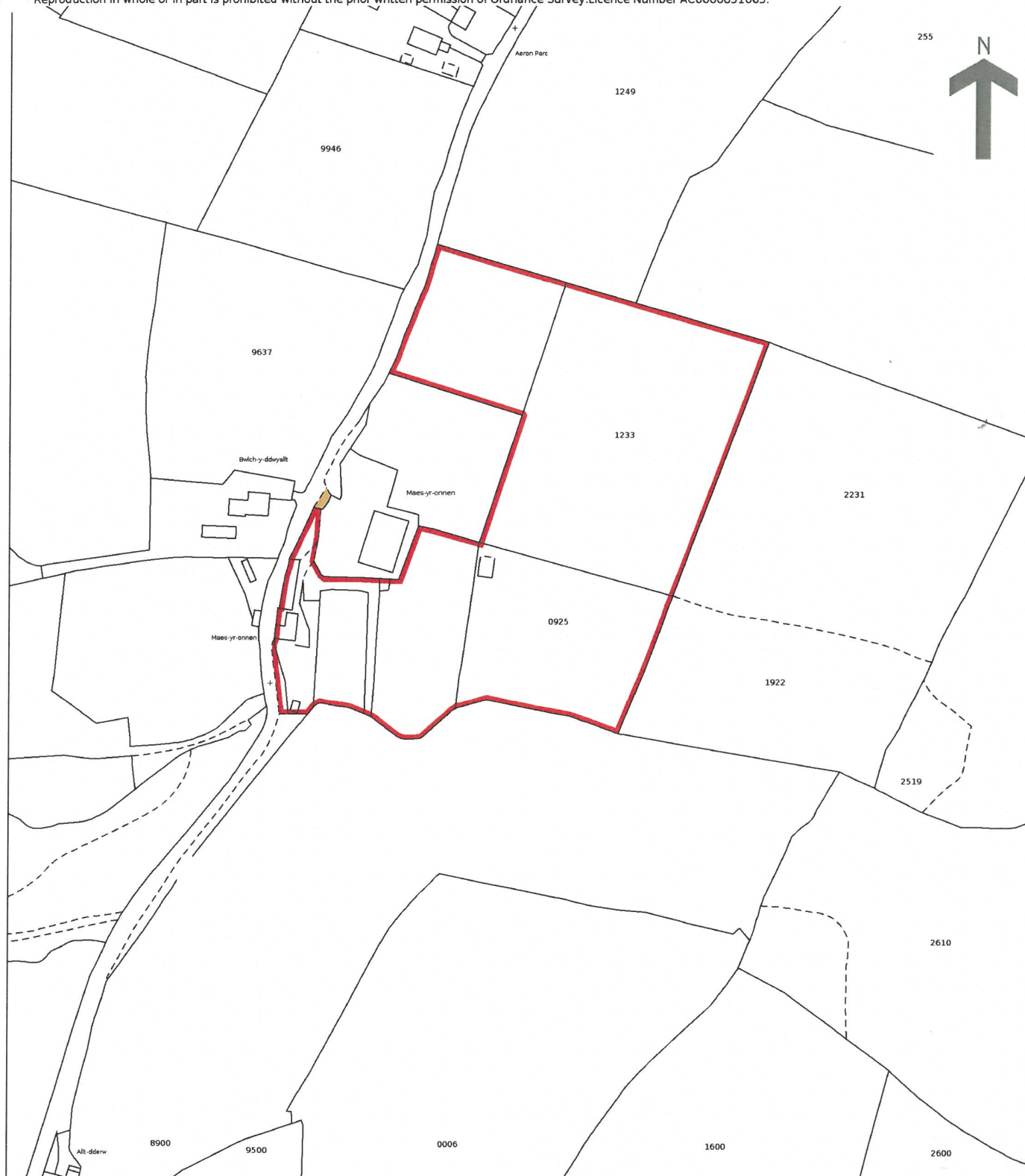
We are informed by the current Vendors that the property benefits from mains water, mains electricity, private drainage via a waste water treatment plant, self contained Waste Water Treatment Works which we are informed has a discharge exemption in place (installed approximately 10 years ago), oil fired central heating via a Stanley Range, UPVC double glazing, telephone subject to B.T. transfer regulations, Broadband subject to confirmation by your Provider. The plumbing and electrics were upgraded/renewed in 2013. Gutters and fascias also renewed in 2013.

HM Land Registry
Official copy of
title plan

Title number **CYM131406**
Ordnance Survey map reference **SN6361SW**
Scale **1:2500**
Administrative area **Ceredigion / Ceredigion**



©Crown Copyright. Produced by HM Land Registry.
Reproduction in whole or in part is prohibited without the prior written permission of Ordnance Survey. Licence Number AC0000851063.



**This official copy is incomplete without the preceding notes page.
Mae'r copi swyddogol hwn yn anghyflawn heb y dudalen nodiadau flaenorol.**

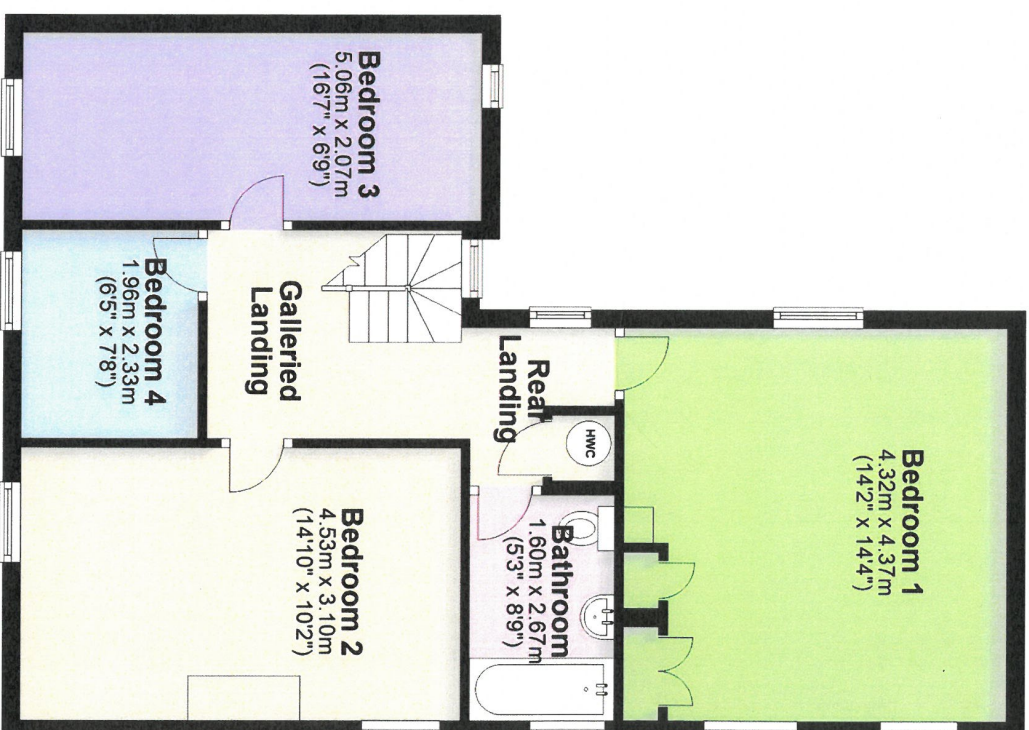
Ground Floor

Approx. 66.9 sq. metres (720.0 sq. feet)



First Floor

Approx. 65.1 sq. metres (700.3 sq. feet)



Total area: approx. 131.9 sq. metres (1420.3 sq. feet)

The Floor plans are for guidance only. Whilst every attempt has been made to ensure the accuracy of the floor plan contained here, measurements of doors, windows, rooms and any other item are approximate and no responsibility is taken for any error, omission, or misstatement.
Plan produced using PlanUp.

Maesyronnen, Llangeitho, TREGARON

Council Tax: Band C

N/A

Parking Types: Driveway.

Heating Sources: Oil.

Electricity Supply: Mains Supply.

Water Supply: Mains Supply.

Sewerage: Private Supply.

Broadband Connection Types: None.

Accessibility Types: None.

EPC Rating: E (53)

Has the property been flooded in last 5 years? No

Flooding Sources:

Any flood defences at the property? No

Any risk of coastal erosion? No

Is the property listed? No

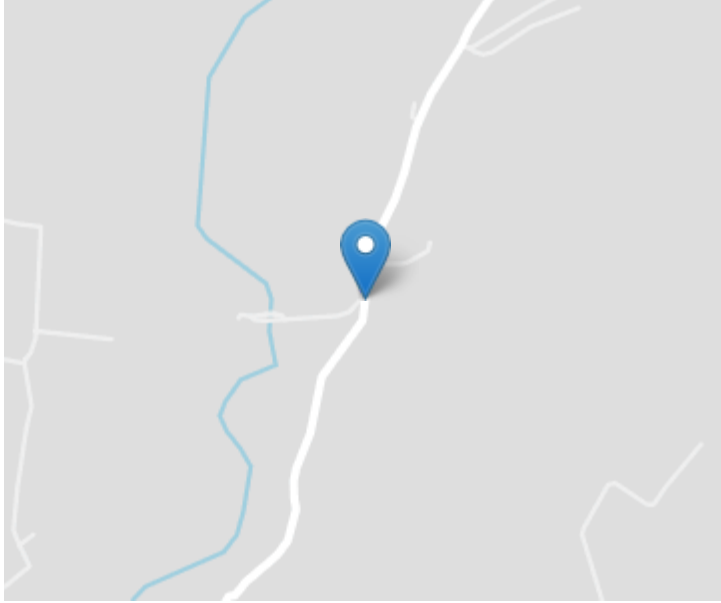
Are there any restrictions associated with the property? No

Any easements, servitudes, or wayleaves?
No

The existence of any public or private right of way? No

Construction Type

Traditional



Directions


From Lampeter take the A485 Tregaron road. Continue to Llanio, turning left onto the B4578. Continue to Stags Head, turning left again down to Llangeitho. Take the third turning off the roundabout, back on yourself, passing the Public House on your left hand side. Continue along this road for approximately 1 mile and the property can be found on the right hand side, as identified by the Agents 'For Sale' board.

VIEWING: Strictly by prior appointment only. Please contact our Lampeter Office on 01570 423 623 or lampeter@morgananddavies.co.uk

All properties are available to view on our Website – www.morgananddavies.co.uk. Also on our FACEBOOK Page - www.facebook.com/morgananddavies. Please 'LIKE' our FACEBOOK Page for new listings, updates, property news and 'Chat to Us'.

To keep up to date please visit our Website, Facebook and Instagram Pages

Energy Efficiency Rating

	Current	Potential
Very energy efficient - lower running costs		
(92+) A	53	94
(81-91) B		
(69-80) C		
(55-68) D		
(39-54) E		
(21-38) F		
(1-20) G		
Not energy efficient - higher running costs		
England, Scotland & Wales		EU Directive 2002/91/EC
		

For further information or to arrange a viewing on this property please contact :

Lampeter Office
12 Harford Square
Lampeter
Ceredigion
SA48 7DT

T: 01570 423623

E: lampeter@morgananddavies.co.uk

<http://www.morgananddavies.co.uk>



Regulated by

RICS