



Loftin Way, Moulsham Lodge, Chelmsford, Essex, CM2 9TP

Council Tax Band C (Chelmsford City Council)



Offers In Excess of £400,000 Freehold

Bond Residential are delighted to offer for sale this end terrace family home situated in the Moulsham Lodge area.

The property offers an entrance hall, lounge/diner, fitted kitchen and a large utility room with space for washing machine & tumble dryer as well as giving access to the rear garden. To the first floor there are three bedrooms and a family bathroom with modern white suite. Outside the property benefits from off road parking to the front of the house plus a shared driveway giving access to the garage. The established rear garden is a real feature of this property with a paved patio area, extensive lawn and mature shrubs & hedging to borders.

LOCATION

Moulsham Lodge is located on the sought after south side of Chelmsford and is hugely popular with homebuyers as it offers a range of local amenities and schools. There is a regular bus service which runs through Moulsham Lodge and provides access to the City Centre.

Chelmsford city centre offers a thriving nightlife with a selection of bars and a wide selection of places to eat from independent family restaurants to well known chain restaurants serving cuisines from around the world, Chelmsford features a comprehensive range of shopping facilities with its pedestrianised High Street, two shopping precincts and hugely popular Bond Street with John Lewis store.

Chelmsford is extremely popular with leisure enthusiasts with a selection of sports clubs at the local Chelmer Park, a selection of gyms including the newly refurbished Riverside Ice & Leisure, there are a selection of golf clubs within the area and the nearby Hylands Park estate and Galleywood Common provide pleasant walks and open spaces.

Chelmsford is renowned for its educational excellence and alongside the local schools situated within close proximity, it offers two of the country's top performing grammar schools, Writtle agricultural college and Anglian Ruskin University.

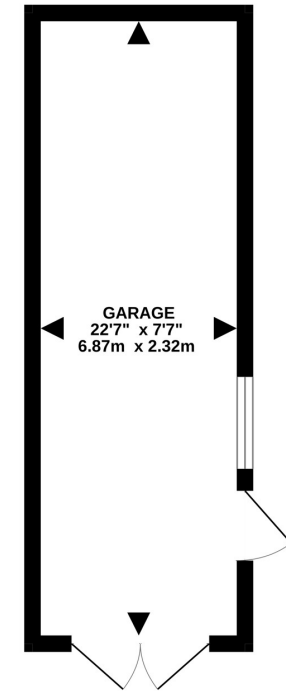
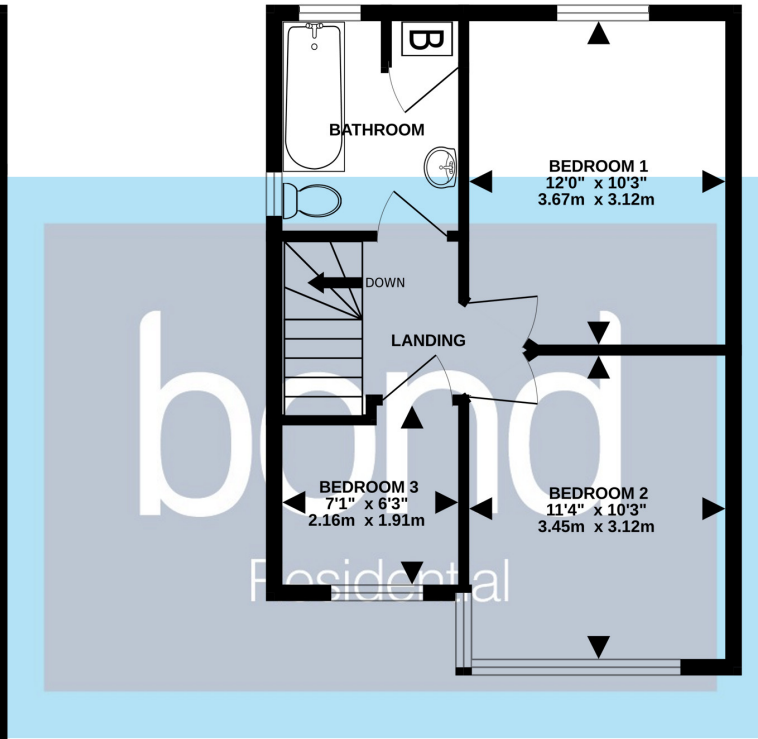
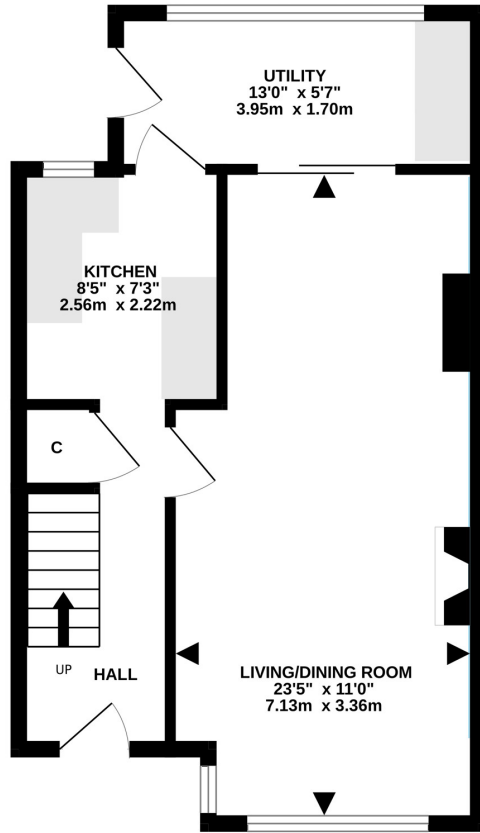
Chelmsford's mainline station provides a direct service to London Liverpool St with a journey time as fast as 32 minutes, the property is also conveniently located within 2 miles of the A12 and A414 which provide access to the M25 and M11.

- End Terrace Family Home
- Fitted Kitchen
- Three Bedrooms
- Gas Central Heating
- Shared Driveway & Garage
- Lounge/Diner
- Large Utility Room
- Family Bathroom with Modern Suite
- Off Road Parking to Front
- Established Rear Garden



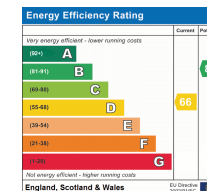






Whilst every attempt has been made to ensure the accuracy of the floorplan contained here, measurements of doors, windows, rooms and any other items are approximate and no responsibility is taken for any error, omission or mis-statement. This plan is for illustrative purposes only and should be used as such by any prospective purchaser. The services, systems and appliances shown have not been tested and no guarantee as to their operability or efficiency can be given.
Made with Metropix ©2024

Consumer Protection from Unfair Trading Regulations 2008 and the Business Protection from Misleading Marketing Regulations 2008. Bond Residential have made every effort to ensure that consumers and/or businesses are treated fairly and provided with accurate material information as required by law. We have not tested any apparatus, equipment, fixture, fitting or any services and as such are unable to verify they are in working order, fit for their purpose, or within the ownership of the seller or landlord. Neither have we been able to check the legal documentation to verify the legal status of the property. We therefore advise potential buyers or tenants to verify these matters with their own solicitors or other advisers.



78, New London Road,
Chelmsford, Essex, CM2 0PD
Telephone: 01245 500599
Website: www.bondresidential.co.uk