



## 7 Glenhill Ashlar Drive, Union Mills, Isle of Man. IM4 4JZ

7 Glen Hill is a superb detached family home nestled at the end of a private road of just 7 properties and is offered in turn key condition.



**£765,000 Freehold**

## PROPERTY DESCRIPTION

---

Discover this stunning large detached home situated on a private road of just seven properties. This impressive property offers spacious and flexible living spaces, perfect for families seeking comfort and style.

Step inside to a impressive entrance hallway with bifurcated staircase to the first floor. The open-plan kitchen diner, featuring high-end appliances and beautiful white marble worktops that create a sleek and modern atmosphere. The kitchen seamlessly flows into a generous dining area, ideal for entertaining guests or enjoying family meals whilst overlooking the garden. Adjacent to this space is the formal lounge, perfect for relaxation and casual gatherings. There is also an additional family room with triple aspect windows providing plenty of space for a family to spread out.

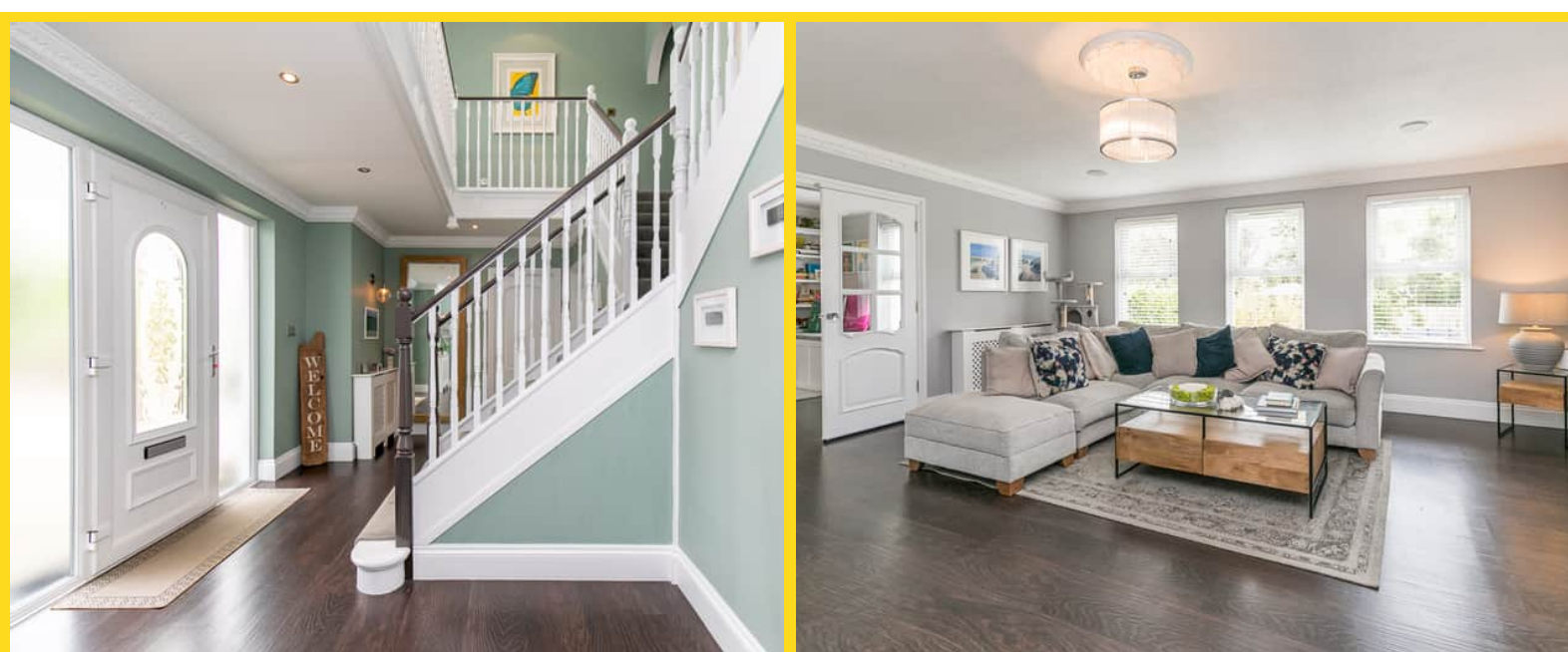
Practicality is key with a well-appointed utility room and an integral double garage, offering ample storage and convenience. Upstairs, the accommodation continues to impress with a very large master bedroom, complete with generous wardrobes and a large en suite. Two additional bedrooms each benefit from their own recently fitted en suite bathrooms, ensuring privacy and comfort for family and guests. The home also includes a versatile study, guest bedroom and guest bathroom.

The rear garden is a true outdoor haven—spacious and beautifully maintained, featuring two patio areas ideal for outdoor dining and entertaining. The garden enjoys day-long sunshine, making it perfect for relaxing in the sun or hosting summer barbecues.

## FEATURES

---

- Impressive Detached Family Home
- Highly Regarded Residential Cul-de-Sac
- Stunning Open Plan Kitchen/Diner
- Large Lounge plus Additional Family Room
- 5 Bedrooms (3 En Suite) plus Bathroom
- Integral Double Garage & Large Driveway





## Property Images

---



**DISCLAIMER:** Whilst Manxmove Ltd believe that these details are correct, neither Manxmove Ltd or their clients guarantee their accuracy in any way. Consequently, these details are not to be used to form part of any legally binding contract. Prospective purchasers or tenants are advised to visit this property to satisfy themselves as to the correctness of these details. Please note, we use wide angle camera lenses in order to show as much of each room as possible. This is not intended to mislead any prospective purchasers or tenants in any way and an honest verbal description is always available prior to viewing if required.