



Estate Agents and Solicitors

18 Lunderston Drive, Priesthill, Glasgow, G53 6BU

Three Bedroom, Mid-Terrace with Gardens & Driveway

Up to date price and viewing info at [mov8realestate.com/property](https://www.mov8realestate.com/property)

espc rightmove  Zoopla
find your happy

Property Description

Bright and well presented, three bedroom, mid-terrace with gardens and a driveway. Set in a residential street in the Priestfield area of Glasgow, southwest of the city centre.

Comprises an entrance hall and upper hall, living room, kitchen, three double bedrooms, a shower room and a bathroom.

Tastefully finished, features include a modern fitted kitchen with appliances, gas central heating and double glazing. In addition, there are multiple tv points and good integrated storage provision including built-in wardrobes for bedrooms one and two.

Externally the property benefits from a paved rear garden featuring partial artificial lawns and a wood summerhouse/bar; whilst to the front, there is a multicar driveway.

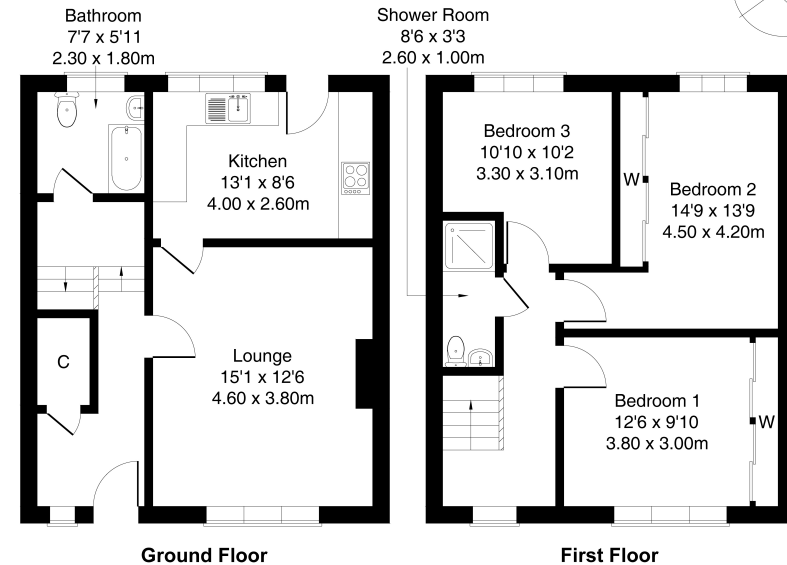
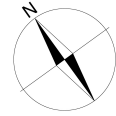
The entrance hall has a storage cupboard, and modern flooring extending through to the front set living room which features a TV wall mount, two light fittings and ample space for dining furniture. Set off the living room, with access to the rear garden, the kitchen is fitted with modern units, stone effect worktops with matching splash backs, a sink with drainer and spotlighting. Appliances include an integrated gas hob, extractor hood, double oven, washing machine and a freestanding American-style fridge/freezer.

On the mid-landing, a family size bathroom is fitted with a three-piece suite with a mains mixer shower over the bath, tiled splash walls and a ladder-style radiator. On the upper hall, bedroom one features carpeted flooring and a built-in wardrobe with sliding doors; two further double bedrooms are set to the rear, similarly well finished with bedroom two also featuring a built-in wardrobe. Completing the accommodation, the fully tiled shower room is set internally off the hall.

A 360 Virtual Tour is available online.

moys⁸ REAL ESTATE 18 Lunderston Drive, Glasgow, G53 6BU
ESTATE AGENTS AND SOLICITORS

Approximate Gross Internal Area: (904 sq ft - 87 sq m.)



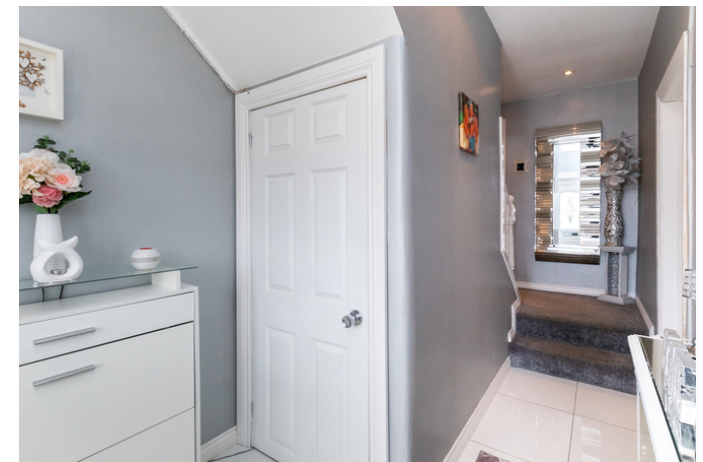
Legal Disclaimer : Floor-plan and measurements are for illustrative guidance only, and not intended to form part of any contract.

Area Description

Priestfield residential area southwest of Glasgow city centre with a mixture of different housing styles. The area is home to Silverburn Centre, one of Glasgow's major indoor retail complexes, and has a good variety of amenities and facilities available locally. With easy access to the M77 and the M8 for commuters. as well

as good local services, Priestfield is close to a number of different railway stations for further onward travel and is well-placed for travel into Glasgow city centre or into Paisley. For outdoor pursuits, there are numerous walks and cycle paths, including the Pollok Country Park and Cowan Park.





Our Services

- Free pre-sale property valuations
- Great value fixed estate agency fees
- Extensive buyer matching database
- Purchase and sale conveyancing

Contact Us

0345 646 0208

sales@mov8realestate.com

www.mov8.com

Head Office

6 Redheughs Rigg, Edinburgh, EH12 9DQ

Glasgow Office

77 Renfrew Street, Glasgow, G2 3BZ



Estate Agents and Solicitors

