



## Coopers Road, Potters Bar, Hertfordshire, EN6

£2,100 pcm

- CHARACTER FEATURES
- MODERN OPEN PLAN KITCHEN
- LOUNGE DINER
- OFFICE GARDEN ROOM
- DOWNSTAIRS TOILET
- THREE BED SEMI DETACHED PERIOD HOME
- BI-FOLDING DOORS
- GATE TO NATIONAL TRUST LAND TO REAR
- SOUTH EASTERLY FACING GARDEN

108, High Street, Potters Bar, EN6 5AT

01707 245 555

[www.home-counties.com](http://www.home-counties.com)

# Coopers Road, Potters Bar, Hertfordshire, . EN6

## £2,100 pcm Freehold

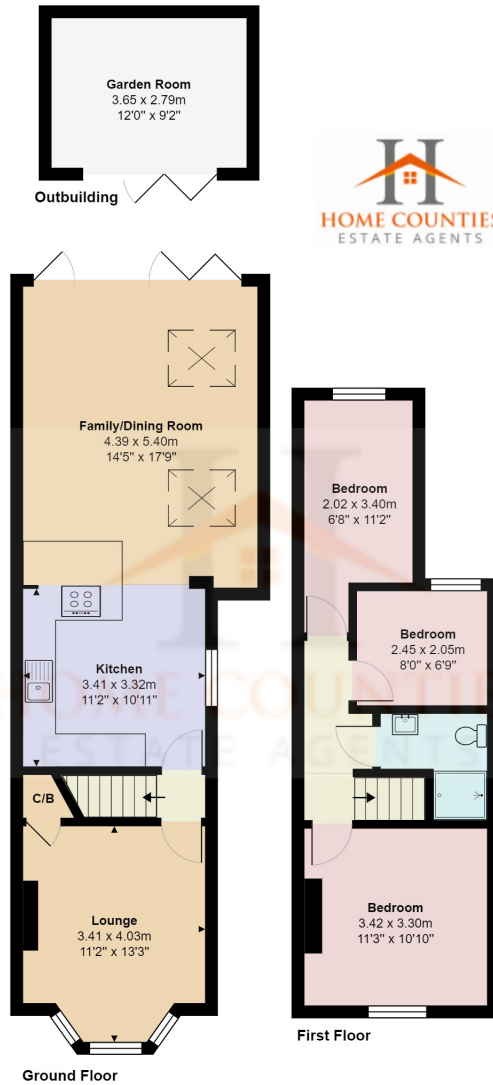
This three bedroom semi detached cottage has been tastefully refurbished and extended with a mix of modern and period features throughout. The property is ideally situated in the ever popular area of Little Heath with stunning views on the upper floor over National Trust Land to the rear. The home benefits from a large and spacious open plan kitchen lounge diner with bespoke modern fitted kitchen, granite work tops and AEG appliances, bi-folding doors opening on to the south easterly facing garden with composite decking and a superb outbuilding to the rear currently used as a garden office / snug, ideal for those working from home. To the front of the home is a second reception room with period features, and downstairs toilet.

The first floor features, two double bedrooms, a single bedroom and a modern shower room.

The property is within walking distance to Little Heath Nursey and Primary School, and nearby to both High Streets and Potters Bar Mainline Train Station with fast train to Finsbury Park and Kings Cross.

There is a gate to the rear of the garden that opens on to the National Trust Land which is excellent in the warmer months allowing neighbours to socialise and ideal for walks to Northaw and beyond.

Viewing advised



### Coopers Road, Hertfordshire EN6

Total Area: 96.2 m<sup>2</sup> ... 1036 ft<sup>2</sup>

All measurements are approximate and for display purposes only

