

# FOR SALE

---

Sharp House Goldhawk Road,  
Shepherd's Bush, W12

---

Flat  
West London

---

£775,000 lh

---

2  2  1 

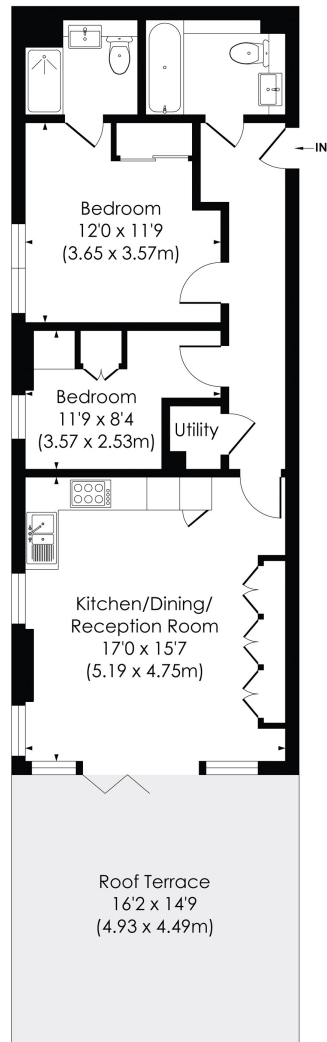


**horton  
andgarton**

SALES / LETTINGS / PROPERTY MANAGEMENT

hortonandgarton.co.uk | Sales 020 8819 0510 | Lettings 020 8819 0511  
172 King Street, Hammersmith, W6 0QU





FOURTH FLOOR

**GOLDHAWK ROAD, W12**

Approx. Gross Internal Floor Area  
**693 Sq' / 64.36 SqM**



© Pixangle Property Marketing Ltd. info@pixangle.com Tel: 0208 870 2118

This floor plan has been prepared for the purpose of illustration only in accordance with the latest RICS code of measuring practice and is not to scale. All measurements and areas are approximate and whilst every effort has been made to ensure the accuracy of the plan contained here, no responsibility is taken for any error, omission or misstatement.



Stylish apartment | Designated underground parking space | 693 Sq' - 64.36 SqM | EPC rating B | Two bedrooms - Two bathrooms | Shepherd's Bush



hortonandgarton.co.uk  
 Sales 020 8819 0510  
 Lettings 020 8819 0511

172 King Street, Hammersmith, W6 0QU