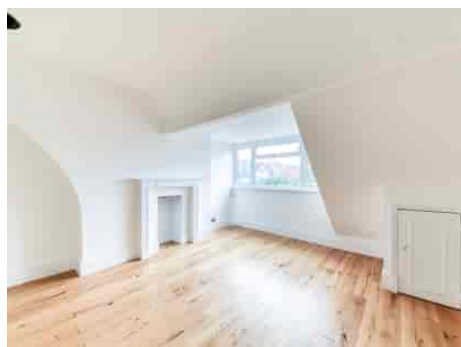


Truuli



Friends Road, Croydon, Surrey, CR0 1EB

£340,000 Share of Freehold

- Two double bedrooms
- Seperate kitchen
- Excellent and efficient transport links
- Good order throughout
- Period character features
- Allocated parking spaces

Southbridge Place, Surrey, CR0 4HA

Tel: 0330 043 0002

Email: save@truuli.co.uk Web: www.truuli.co.uk

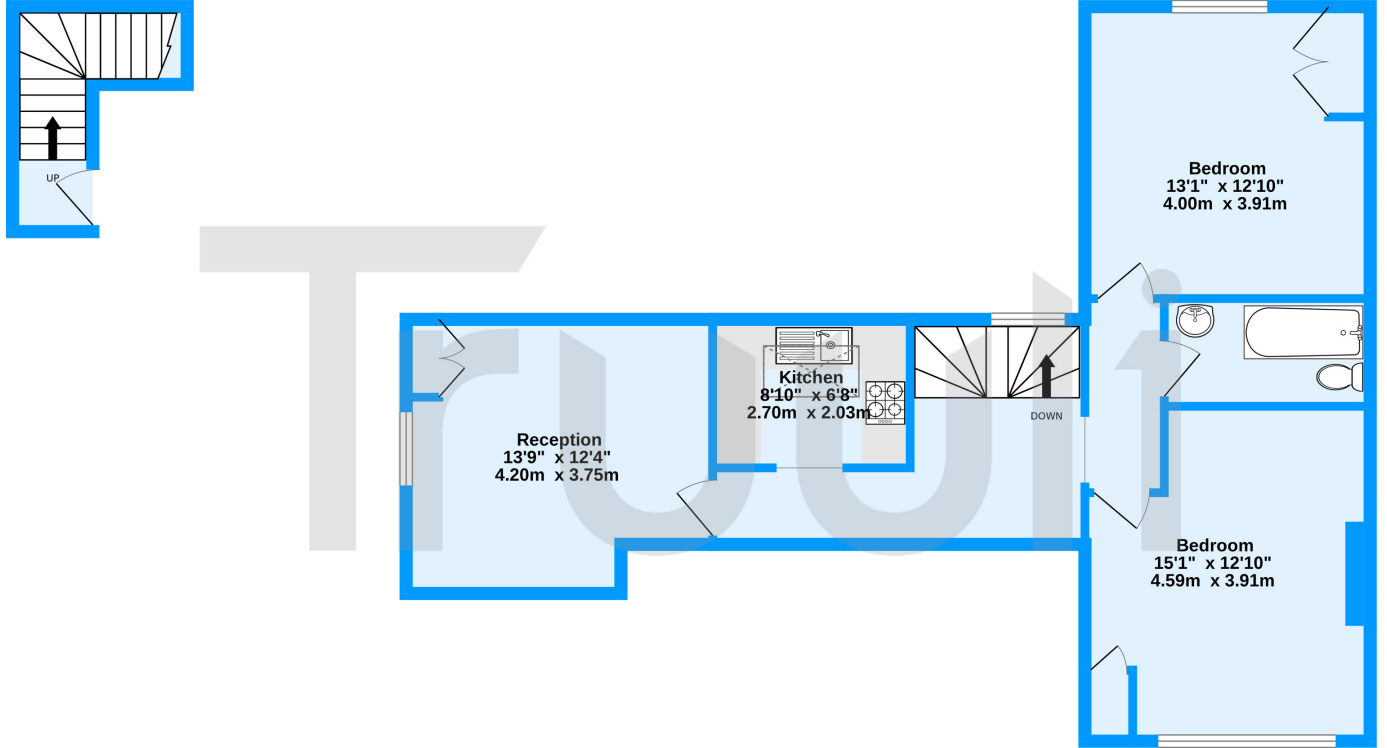
Friends Road, Croydon, Surrey, CR0 1EB

£340,000 Share of Freehold

This top-floor, freehold, two-bedroom period conversion on Friends Road has been refurbished throughout. Friends Road is located in an ideal and central part of Croydon, allowing you to be within easy reach of many local amenities such as parks, restaurants and shops, along with East Croydon Station.

First Floor Entrance
51 sq.ft. (4.8 sq.m.) approx.

Second Floor
749 sq.ft. (69.6 sq.m.) approx.



Friends Road, Croydon, CR0

TOTAL FLOOR AREA: 800 sq.ft. (74.3 sq.m.) approx.

Measurements are approximate. Not to scale. Illustrative purposes only
Made with Metropix ©2024

