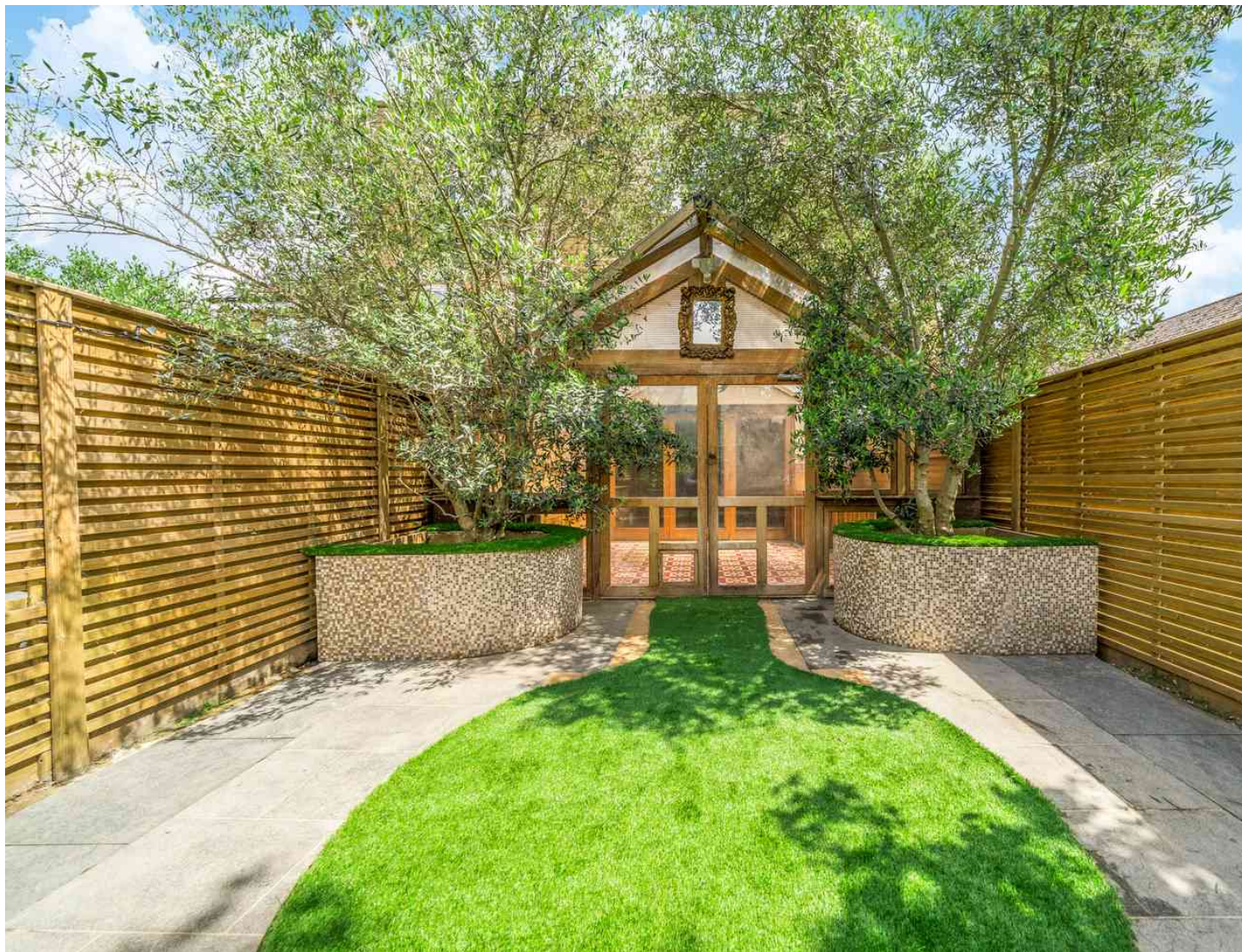




Windmill Road, Brentford, TW8 0NZ

**Cow & Co**  
LONDON





Guide price of £800,000 to £950,000. A stunning modern terraced family home, positioned in a sought after location and presented to a very high standard.

The property features an array of high specification fittings including quartz stone kitchen work tops, Miele appliances, Quooker hot water tap and Hansgohe bathroom fittings.

The property comprises of a stunning large open plan kitchen and living room. Four bedrooms, 3 bathrooms including two en-suites, fully fitted wardrobes throughout and a utility room.

Further benefits include off street parking for two cars and a modern landscaped west facing rear garden.

Brentford Railway station is 0.2 miles away and Northfields tube station is less than a mile away.



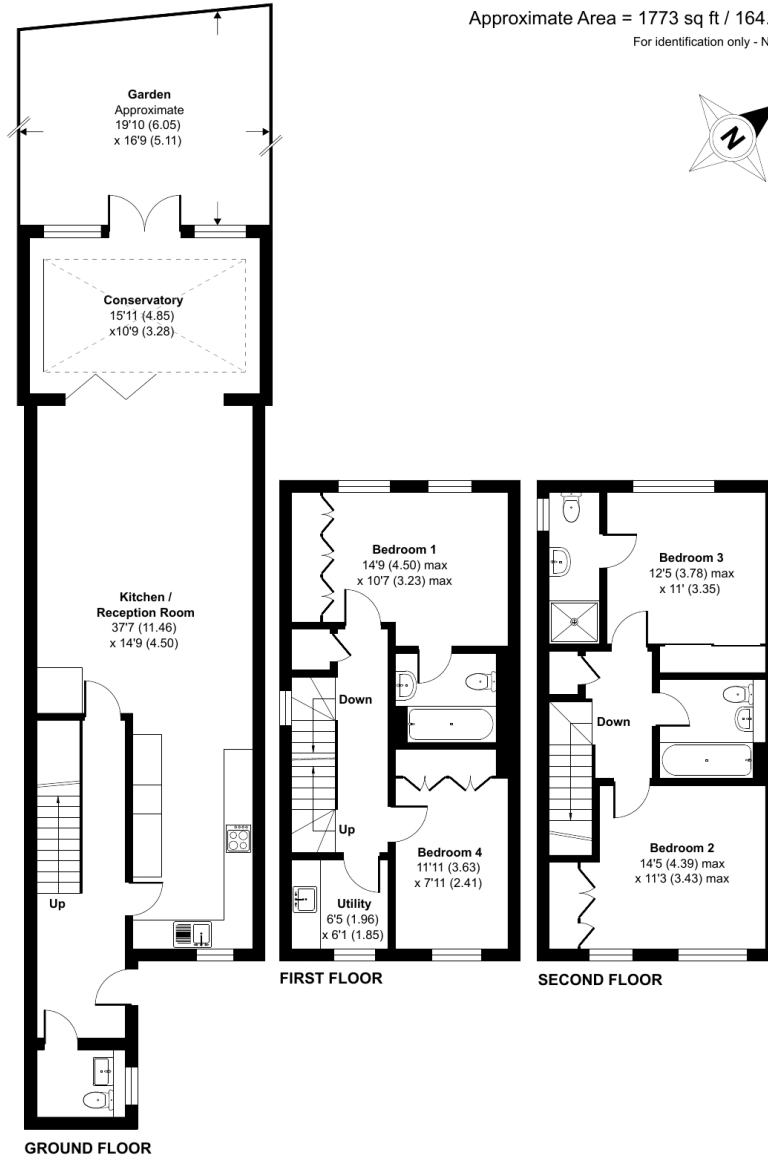


- Chain free
- Three storey town house
- Built and fitted to a very high specification
- Utility room
- Four bedrooms
- Two parking spaces
- Landscaped garden
- Close to a wealth of amenities and transport links

# Windmill Road, Brentford, TW8

Approximate Area = 1773 sq ft / 164.7 sq m

For identification only - Not to scale



Floor plan produced in accordance with RICS Property Measurement Standards incorporating International Property Measurement Standards (IPMS2 Residential). © nchecom 2024. Produced for Cow & Co Properties Ltd. REF: 1121627

Tel: 0208 065 0010  
Email: [thehub@cowandco-london.com](mailto:thehub@cowandco-london.com)  
Web: [cowandco-london.com](http://cowandco-london.com)

Agents note: All measurements are approximate and whilst every attempt has been made to ensure accuracy they are for general guidance only and must not be relied on. The fixture and fittings referred to have not been tested and therefore no guarantee can be given that they are in working order. Internal photographs are reproduced for general information and it must not be inferred that any item shown is included with the property.

# Cow & Co

LONDON