




9 Whittle Court,
Knowlhill, Milton Keynes, MK5 8FT

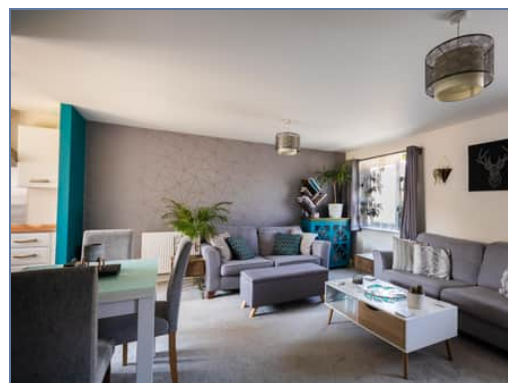
Tel: 01908 231 551 
mail@elevationstateagents.com



**Flat 2, 337 Countess Way, Brooklands,
Milton Keynes, Buckinghamshire, MK10
7HG**

£105,750 Leasehold

- Two double bedroom apartment
- Ground floor apartment
- Desirable and highly sought after location
- 45% shared ownership
- Allocate Parking
- EPC Rating



See our full selection of properties online at www.elevationstateagents.com



This is a brilliant sized two bedroom ground floor apartment located in the popular area of Brooklands. The accommodation comprises an entrance hall, open plan lounge/kitchen/diner, two good size bedrooms and family bathroom. Outside there is allocated parking for one vehicle. This property is on the shared ownership scheme at a 45% share and the housing association is Paradigm. Brooklands is a sought-after area in Milton Keynes, providing easy access to both Central Milton Keynes and to the M1 junction 14 with outstanding schools within walking distance. For further details or to arrange a highly recommended internal viewing please call the elevation team today.

- 120 years remaining in lease

- Ground rent £150 per annum

- Monthly rent/service charge £421.12

Disclaimer

Whilst we have endeavoured to prepare our sales particulars accurately none of the services, appliances or equipment have been tested. A buyer should satisfy themselves on such matters prior to purchase. Any measurements or distances mentioned in these particulars are for guide reference only. If such particulars are fundamental to a purchase, buyers should rely on their own enquiries. All enquiries should be directed to Elevation Estate Agents in the first instance.