



daniels
danielsestateagents.co.uk

daniels
danielsestateagents.co.uk



**Blackheath House, 160 Harlesden Road, London NW10 3RE
£350,000 - Leasehold**



PROPERTY DESCRIPTION

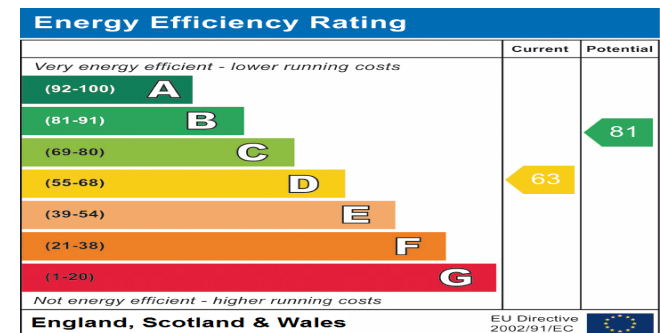
Offered for sale with NO UPPER CHAIN is this WELL PRESENTED ground floor apartment set within a POPULAR MODERN DEVELOPMENT with the benefit of an allocated PARKING SPACE.

The property offers SPACIOUS ACCOMODATION THROUHOUT and benefits include OPEN PLAN LIVING ROOM & KITCHEN AREA, TWO DOUBLE BEDROOMS, MASTER with ENSUITE and FULLY FITTED FAMILY BATHROOM.

Located on Harlesden Road with fantastic transport links to Kensal Rise and Willesden Green. The ever popular Roundwood Park is only a short walking distance away. Leasehold with approx. 100 years remaining.

POINTS OF INTEREST

- TWO BEDROOMS
- GROUND FLOOR
- PURPOSE BUILT DEVELOPMENT
- WELL MAINTAINED
- OVER 100 YEARS LEASEHOLD
- NO UPPER CHAIN



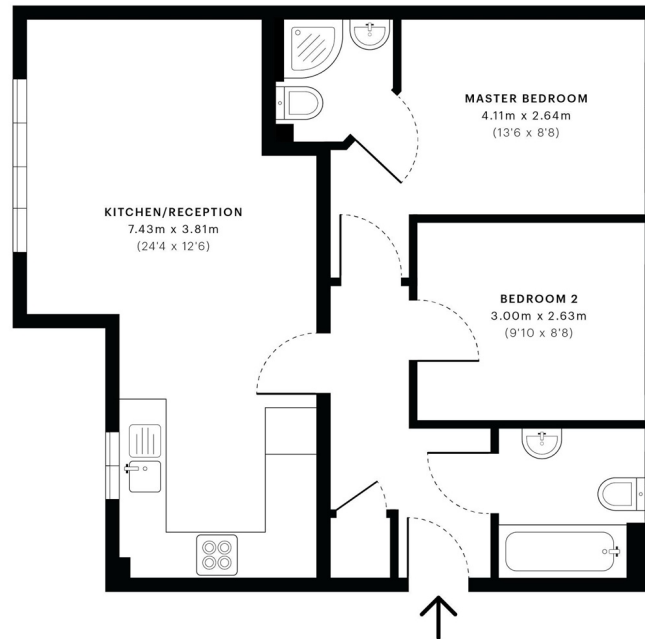


Blackheath House, NW10

CAPTURE DATE
09/03/2020

LASER SCAN POINTS
22,756,623

GROSS INTERNAL AREA
55.8 Sqm / 600.7 Sqft



—Ground Floor

 GROSS INTERNAL AREA (GIA)
The footprint of the property.
55.8 Sqm / 600.7 Sqft

 NET INTERNAL AREA (NIA)
Excludes walls and external features.
Includes washrooms, restricted head
52.5 Sqm / 565.3 Sqft

 EXTERNAL STRUCTURAL FEATURES
Balconies, terraces, verandas etc.
0.0 Sqm / 0.0 Sqft

 RESTRICTED HEAD HEIGHT
Limited use area under 1.5m
0.0 Sqm / 0.0 Sqft



Spec floor plans are produced in accordance with the Royal Institution of Chartered Surveyors' Property Measurement Standards. Plots and gardens are illustrative only and are excluded from all area calculations. Due to rounding, numbers may not add up precisely. All measurements shown for the individual room lengths and widths are the maximum points of measurements captured in the scan.



IPMS 3B RESIDENTIAL
57.1 Sqm / 614.1 Sqft
IPMS 3C RESIDENTIAL
53.8 Sqm / 578.7 Sqft

SPEC ID
5e5a59befdd3f50c75493fed