

TO
LET



Flat 6, 147 George Street, Marylebone, London W1H 5LB

£700 p/w

107, Crawford Street, London, W1H 2JE 0207 4866711 dee@mcglashans.co.uk





Flat 6, 147 George Street, Marylebone, London, W1H 5LB
£700 p/w



PROPERTY DESCRIPTION

A 2nd floor contemporary one bedroom flat in this ever popular and well maintained building which offers the benefits of a lift and porter. The flat is light and bright, offers neutral décor and is quiet. Located close to Marylebone High Street with its boutique shops, restaurants and both Baker Street and Marble Arch tube station are within easy walking distance. Hyde Park and Regents Park are both short walks away. EPC -D, Council Tax (Westminster) Band F, Security Deposit £3,500, Electricity, Water and Sewerage – all mains connections. Broadband: good service available. Mobile – good service available, Parking – Residents permit required from Westminster Council (fees apply).

Living room, kitchen, bedroom, bathroom, lift, porter, secure underground parking space available £65 per week

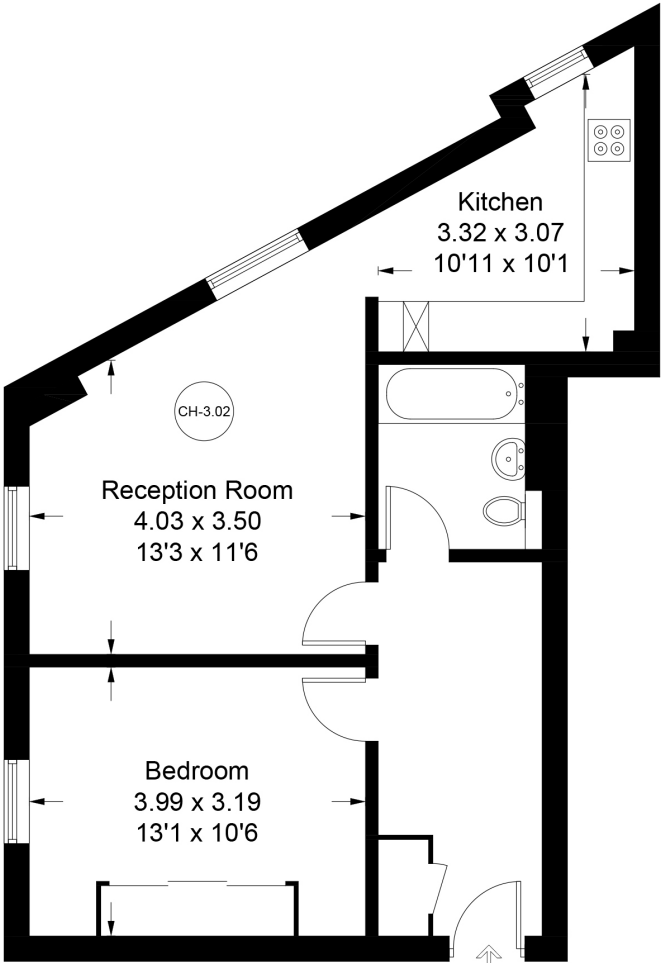
ACCOMMODATION

- Living Room
- Kitchen
- Bedroom
- Bathroom
- Lift
- Porter



George Street

Approximate Gross Internal Area = 52.7 sq m / 567 sq ft



Second Floor

This plan is for layout guidance only. Not drawn to scale unless stated. Windows and door openings are approximate. Whilst every care is taken in the preparation of this plan, please check all dimensions, shapes and compass bearings before making any decisions reliant upon them. (ID1163632)

Energy Efficiency Rating		
	Current	Potential
Very energy efficient - lower running costs		
(92+) A		
(81-91) B		
(69-80) C		
(55-68) D		63
(49-54) E		
(31-48) F		
(1-30) G		
Not energy efficient - higher running costs		
England, Scotland & Wales		
EU Directive 2002/91/EC		