



## Bedford Street

Hitchin | Hertfordshire | SG5 2JG

[www.stonegate-estates.co.uk](http://www.stonegate-estates.co.uk)



# BEDFORD STREET

## Property Description

Step in the storybook charm of this splendid, detached period property located close to the heart of Hitchin town centre. This character-filled house boasts a myriad of features, including a beautiful kitchen/dining/living room overlooking the back garden, two reception rooms, study, downstairs toilet, large cellar (utility / second study), four spacious double bedrooms, an en-suite and family bathroom.

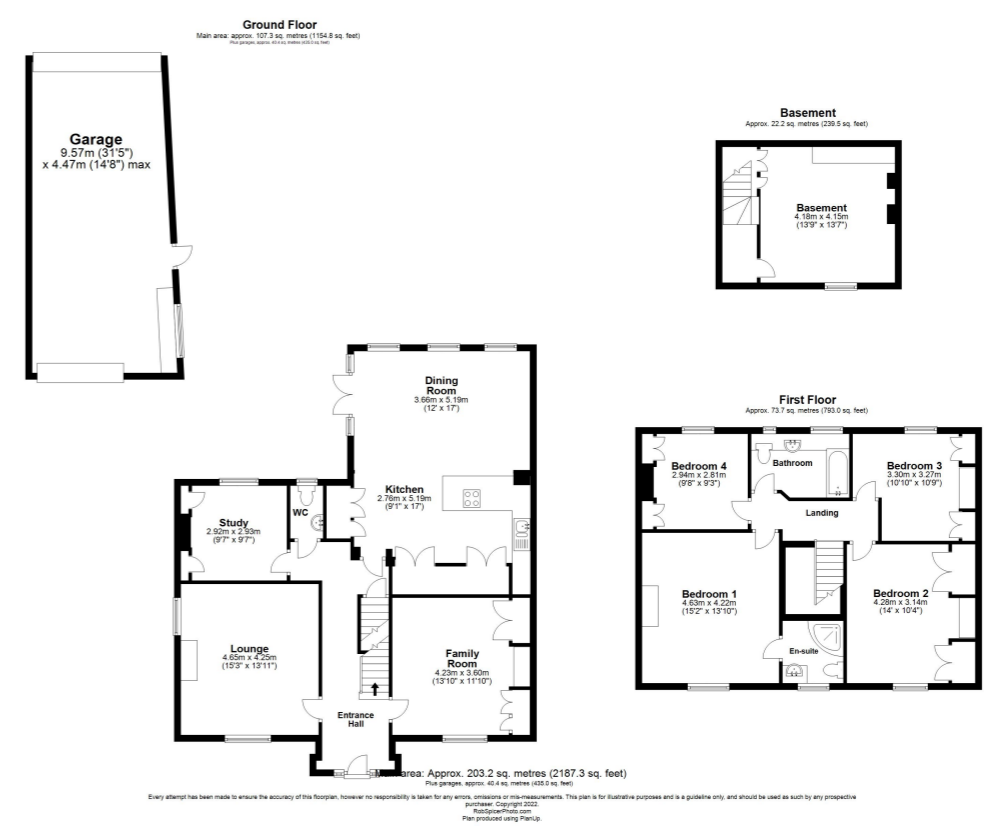
Outside, there is a driveway, with room to park up to four cars, a large garage / workshop, and a beautiful walled garden. Both garden and garage have direct access to a back lane with more off-road parking, and a protected village green.

Mere footsteps away lie excellent schools, a vibrant town centre filled with shops, pubs and eateries, an indoor and outdoor pool, gym, theatre, and a train station offering direct access to King's Cross

A unique, tucked away treasure, this home offers peace and convenience in equal measure. The generous 2200 sq/ft layout allows for ample room to relax and entertain. Additionally, the 450 sq/ft garage/workshop could offers a haven for a hobbyist, or could potentially provide additional living space

**£1,650,000 Freehold**







- Period Detached Property
- Four bedrooms (Master with en-suite)
- Parking for multiple vehicles
- Walking distance to town centre and schools
- Spacious Kitchen/Family/Dining Room
- Cellar (2nd Study/Utility)
- Two Reception Rooms & Study
- Large Garage/Workshop

EPC Rating: E

Stonegate Estate Agents

01462 438979

[sales@stonegate-estates.co.uk](mailto:sales@stonegate-estates.co.uk) | [www.stonegate-estates.co.uk](http://www.stonegate-estates.co.uk)

