

**Radbourne Avenue, W5**

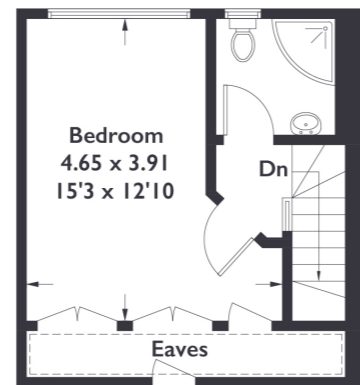
Approximate Gross Internal Area = 123.5 sq m / 1329 sq ft  
(Including Eaves)



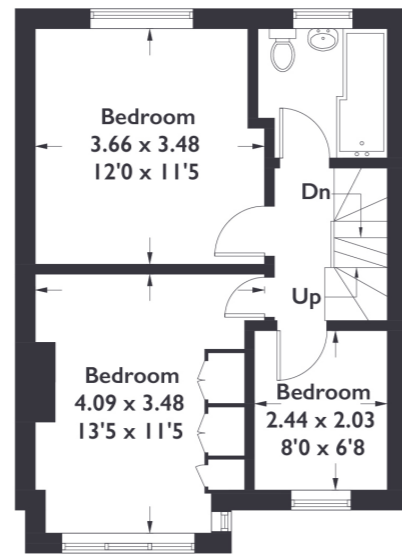
= Reduced Headroom



**Ground Floor**



**Second Floor**



**First Floor**

Measured in accordance with RICS Code of Measuring Practice. To be used for identification and guidance purposes only. Whilst every care is taken in the preparation of this plan, please check all dimensions, shapes and compass bearings before making any decisions reliant upon them.



**4 BEDROOM HOUSE**

**Radbourne Avenue, W5**

£865,000

This substantial four bedroom Victorian-style house offers thoughtfully configured neutral interiors, built in storage throughout and a well maintained private rear garden, making it an ideal home for a growing family. This property is also offered on a chain free basis.

**FEATURES**

- Terraced Period House
- Four Bedrooms
- Extended Into The Loft
- Private Rear Garden With Access
- Built In Storage Throughout
- Little Ealing Primary Catchment
- Ealing Fields High School Catchment
- South Ealing Station (Piccadilly Line)
- Energy Rating: C



4 BEDROOM HOUSE

## Radbourne Avenue, W5

£865,000

Positioned within the heart of South Ealing, this Victorian-style house is arranged over three levels.

On the ground floor, you are welcomed by a spacious entrance hallway. To the front, there is a large reception room with popular wooden shutters and a beautiful period fireplace. The hallway opens onto the large modern kitchen / diner featuring integrated appliances, ample amount of storage and stunning tiled flooring. Bi-folding doors open back and welcome you out into a private east-facing garden with rear access. Additionally, there is a downstairs WC and storage cupboard to complete the ground floor. Upstairs on the first floor, there are two large double bedrooms to the rear and front, plus the addition of a single / study room. The property has also been extended into the loft and boasts a large double bedroom, en-suite shower room and plenty of storage space in the eaves.

Radbourne Avenue is positioned just a stone's throw away from all of the amenities that both South Ealing and Ealing Broadway have to offer. Local schools such as Little Ealing Primary and Ealing Fields High School are on your doorstep and for transport, you'll find an easy connection to central London via the Piccadilly Line at South Ealing Station and Northfields Station (both approximately a ten minute walk away).

