



**diamond**  
PROPERTIES



**11 Mayville Place, Headingley, Leeds, West Yorkshire. LS6 1NE.**

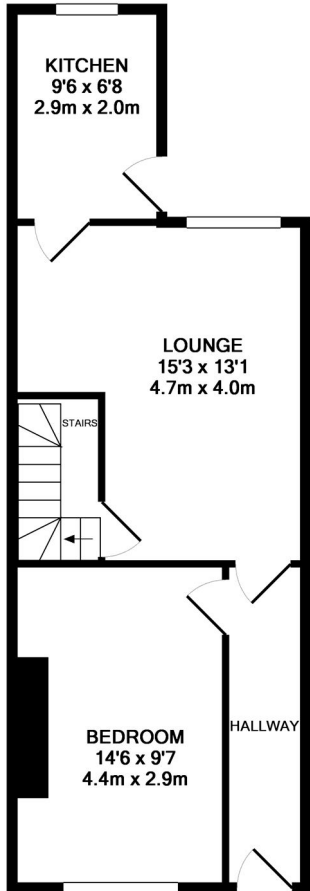
**£2,063 Freehold**

- Excellent Location
- Open plan kitchen/lounge
- Five bedrooms
- Two bathrooms
- £95PPPW
- Available 01.07.2022

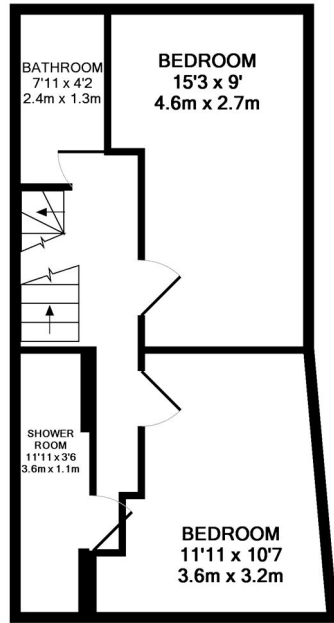
# 11 Mayville Place, Headingley, Leeds, West Yorkshire. LS6 1NE.

**£2,063 Freehold**

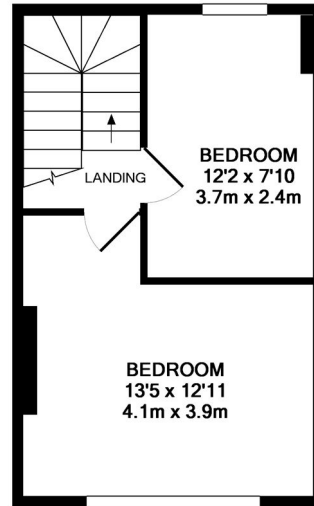
Diamond Properties are pleased to offer for rent, this five double bedroom mid terrace student property, which is situated in a popular and convenient residential location, with access to local amenities and commuter transport links. The accommodation is spread over three floors, briefly comprises; kitchen area, living/dining-room, five double bedrooms, two bathrooms and a yard to the front and back of the property. An early internal inspection is a must to fully appreciate the potential of this property. Viewing by appointment only



GROUND FLOOR  
APPROX. FLOOR  
AREA 444 SQ.FT.  
(41.2 SQ.M.)



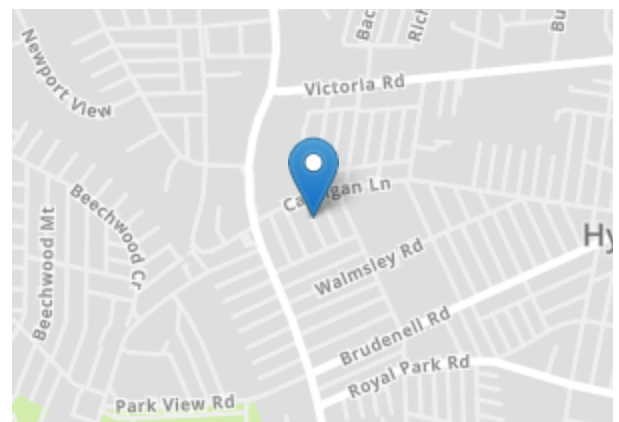
1ST FLOOR  
APPROX. FLOOR  
AREA 359 SQ.FT.  
(33.3 SQ.M.)

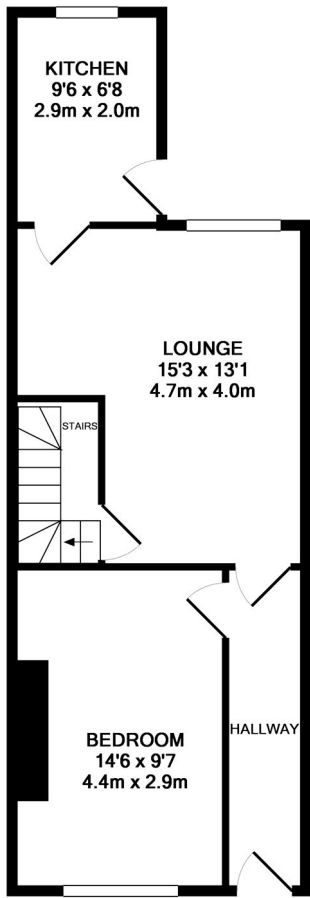


2ND FLOOR  
APPROX. FLOOR  
AREA 289 SQ.FT.  
(26.9 SQ.M.)

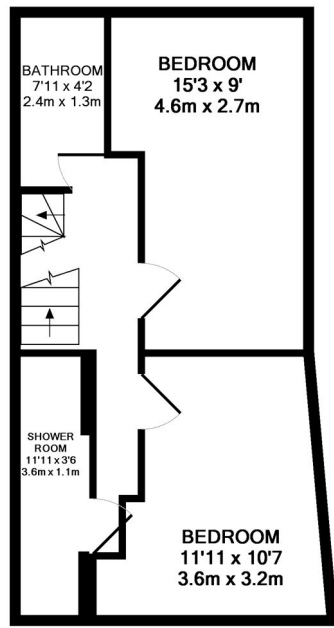
TOTAL APPROX. FLOOR AREA 1092 SQ.FT. (101.4 SQ.M.)

Whilst every attempt has been made to ensure the accuracy of the floor plan contained here, measurements of doors, windows, rooms and any other items are approximate and no responsibility is taken for any error, omission, or mis-statement. This plan is for illustrative purposes only and should be used as such by any prospective purchaser. The services, systems and appliances shown have not been tested and no guarantee as to their operability or efficiency can be given  
Made with Metropix ©2014

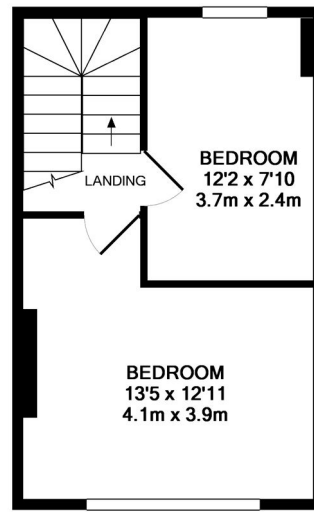




GROUND FLOOR  
APPROX. FLOOR  
AREA 444 SQ.FT.  
(41.2 SQ.M.)



1ST FLOOR  
APPROX. FLOOR  
AREA 359 SQ.FT.  
(33.3 SQ.M.)



2ND FLOOR  
APPROX. FLOOR  
AREA 289 SQ.FT.  
(26.9 SQ.M.)

TOTAL APPROX. FLOOR AREA 1092 SQ.FT. (101.4 SQ.M.)

Whilst every attempt has been made to ensure the accuracy of the floor plan contained here, measurements of doors, windows, rooms and any other items are approximate and no responsibility is taken for any error, omission, or mis-statement. This plan is for illustrative purposes only and should be used as such by any prospective purchaser. The services, systems and appliances shown have not been tested and no guarantee as to their operability or efficiency can be given  
Made with Metropix ©2014