

7 Birkdale Drive

Folkestone
CT19 5LP

£325,000 FREEHOLD

DRAFT DETAILS... FOR SALE WITH BURNAP + ABEL... (£325,000-£350,000) Burnap + Abel are delighted to offer this two bedroom semi-detached bungalow situated in the sought after location of Birkdale Drive in Folkestone. The property is in our opinion in good decorative order and offers a lounge/diner, kitchen, conservatory, bathroom, W.C and two bedrooms. Additional benefits include a garage, off road parking, a south facing rear garden and no onward chain. For your chance to view call sole agent Burnap + Abel on 01303 258590.



Entrance Hall

Lounge/Dining Room

15' 4" x 15' 1" (4.67m x 4.60m)

Conservatory

12' 0" x 8' 2" (3.66m x 2.49m)

Kitchen

10' 4" x 6' 4" (3.15m x 1.93m)

W.C

Bathroom

6' 6" x 5' 7" (1.98m x 1.70m)

Bedroom One

15' 2" x 10' 2" (4.62m x 3.10m)

Bedroom Two

12' 3" x 7' 10" (3.73m x 2.39m)

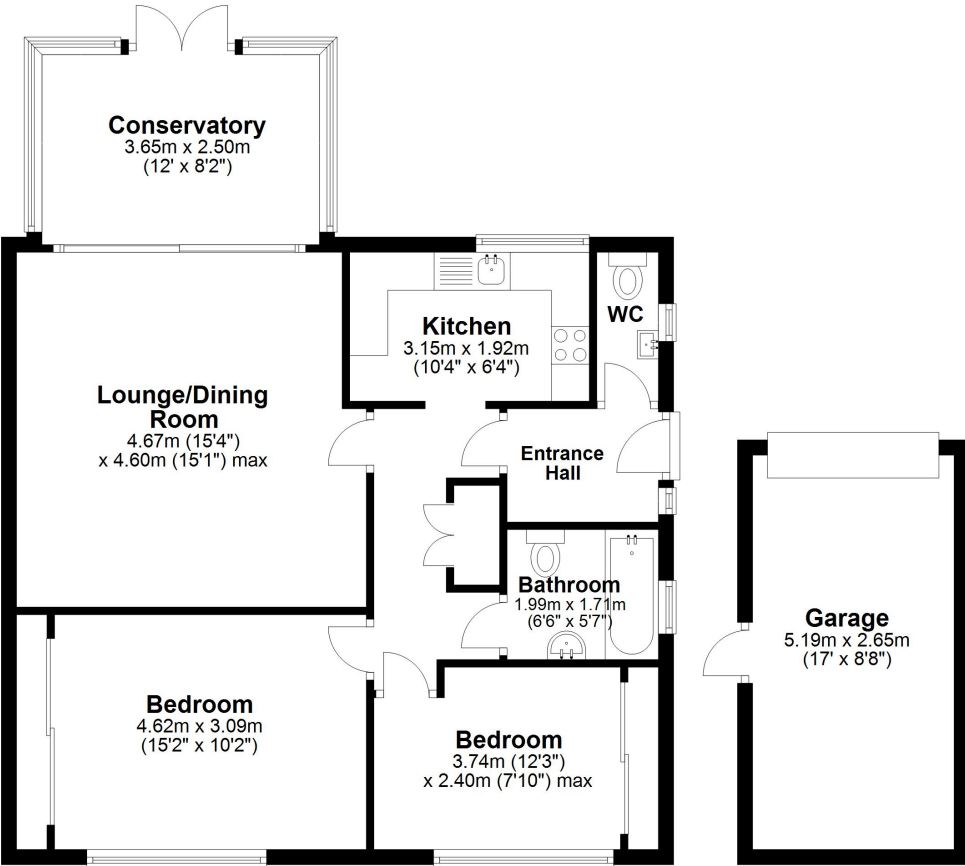
Garage

17' 0" x 8' 8" (5.18m x 2.64m)

Off Road Parking

Rear Garden

Ground Floor
Approx. 89.5 sq. metres (963.7 sq. feet)



Total area: approx. 89.5 sq. metres (963.7 sq. feet)

Whilst every attempt has been made to ensure the accuracy of the floor plan contained here, measurements of doors, windows, rooms and any other items are approximate and no responsibility is taken for any error, omission or mis-statement. This plan is for illustrative purposes only and should be used as such by any prospective purchaser.
Plan produced using PlanUp.

