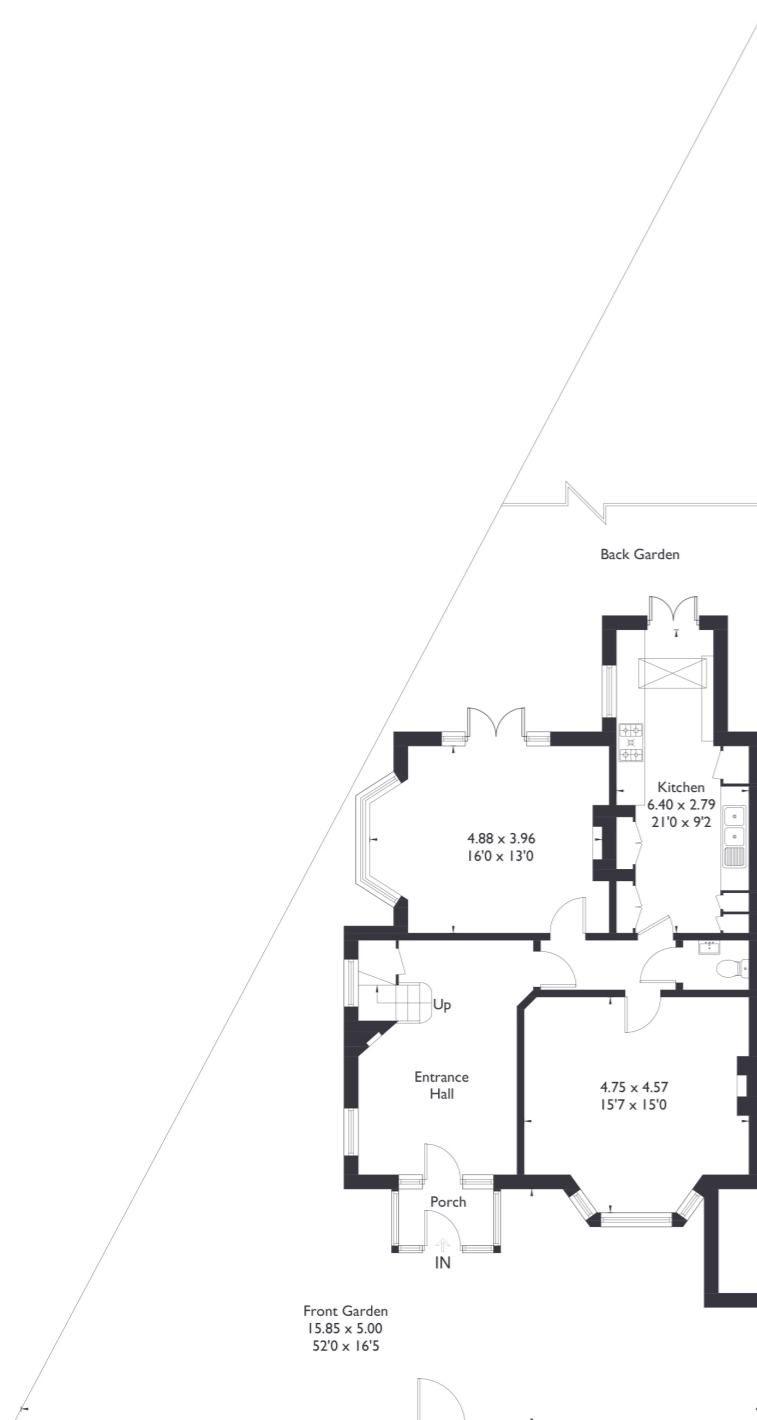
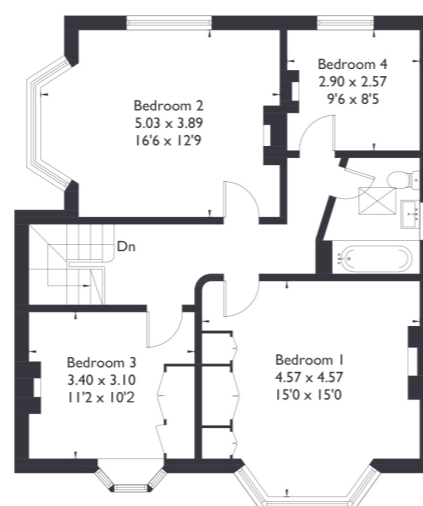


Lavington Road ,W13 9LS

Approximate Floor Area = 155.8 sq m / 1677 sq ft
External Cupboard = 2.0 sq m / 21 sq ft
Total = 157.8 sq m / 1698 sq ft



Ground Floor



First Floor



4 BEDROOM HOUSE

Lavington Road, W13

£1,600,000

Welcome to this exquisite four-bedroom Edwardian detached home, perfectly situated in the heart of Northfields on one of its most sought after roads.

This beautifully presented property boasts generously sized rooms throughout, with nearly every space featuring an original working fireplace, adding to its timeless charm. The interiors are truly exceptional, blending character with elegant design.

FEATURES

- Original Edwardian Features
- Detached House
- Four Bedrooms
- One Bathroom & Downstairs W/C
- Large Reception & Dining Room
- Northfields Amenities
- West Ealing Station (Elizabeth Line)/ Northfields Station
- EPC Rating D



4 BEDROOM HOUSE

Lavington Road, W13

Positioned at the end of the road, the home benefits from a spacious west facing front garden, which alongside the space to the rear, provides a wonderful outdoor retreat.

Rich in original features and brimming with potential, this property is a rare find. Conveniently located just a 15 minute walk from Northfields Station and only five minutes from a vibrant selection of local amenities, it also falls within the highly desirable catchment area for Christ the Saviour Church of England Primary School. A true gem in a prime location—this is a home not to be missed!

EPC Rating D.

