




Nestled on the picturesque border between Iver Heath and Uxbridge, this outstanding turn-of-the-century detached residence exudes elegance and grandeur. Set within 1.75 acres of meticulously landscaped grounds, this exceptional property offers a unique combination of historic charm and modern convenience. Accessed via electronically controlled gates, the property promises both privacy and security, while extensive car parking facilities ensure ample space for guests and residents alike.

Boasting eight generously sized bedrooms, this home provides the perfect space for a large family or those who enjoy entertaining. The master suite, along with three other bedrooms, includes en-suite facilities, with one featuring a convenient Jack and Jill bathroom, ideal for siblings or guests. The additional family bathroom is beautifully appointed, providing luxury and comfort for everyday living.


The heart of this residence is undoubtedly the spacious and well-equipped kitchen, complemented by multiple utility rooms to cater to the practical needs of a modern household. Two grand reception rooms offer ample space for both formal gatherings and relaxed family living, each filled with natural light thanks to the property's double glazing. Gas central heating throughout ensures the home remains cosy during the cooler




Property Information


- 

GRAND EIGHT BEDROOM DETACHED HOUSE
- 

GATED PARKING FOR NUMEROUS CARS
- 

FOUR BATHROOMS - 3 ENSUITES
- 


COUNCIL TAX BAND - H
- 

5 WEEK SECURITY DEPOSIT - £6,057.65
- 

BRAND NEW KITCHEN & CARPETS
- 

1.75 ACRE GARDEN
- 

EPC - D
- 

1 WEEK HOLDING DEPOSIT - £1,211.53
- 

AVAILABLE NOW AND UNFURNISHED



x8

Bedrooms



x2

Reception Rooms



x4

Bathrooms



x15

Parking Spaces



Y

Garden

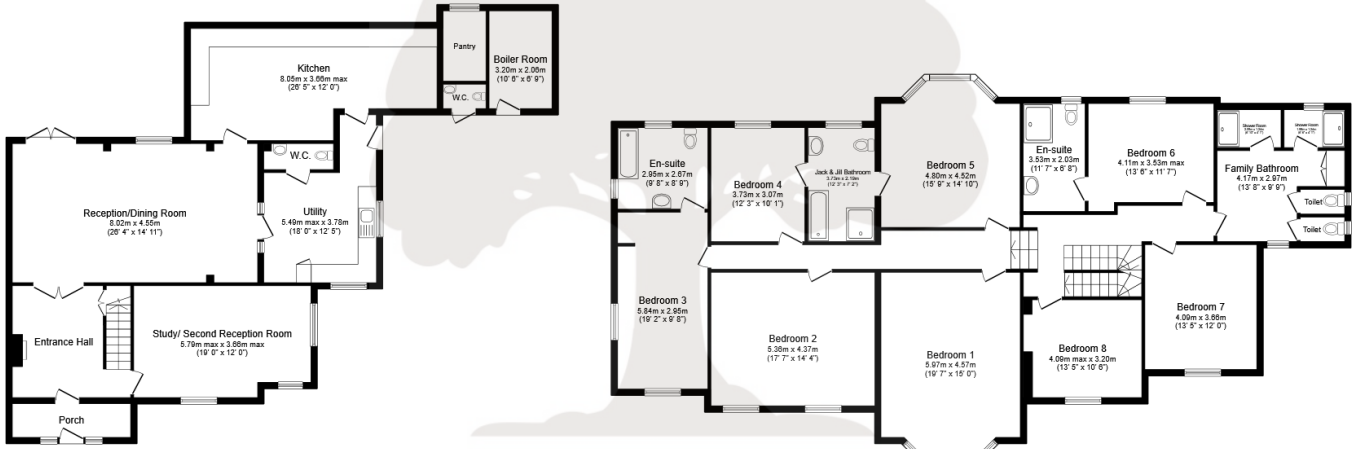


N

Garage

- Garden
- Garage
- Kitchen
- Bedroom
- Bedroom
- Bathroom
- Bathroom
- Bathroom
- Bathroom
- Lounge (Reception)
- Lounge (Reception)
- Bedroom
- Bedroom
- Bedroom
- Bedroom
- Bedroom
- Bedroom

Floor Plan



Ground Floor  
Floor area 134.9 m<sup>2</sup> (1,452 sq.ft.)

First Floor  
Floor area 212.5 m<sup>2</sup> (2,287 sq.ft.)

TOTAL: 347.4 m<sup>2</sup> (3,740 sq.ft.)

This floor plan is for illustrative purposes only. It is not drawn to scale. Any measurements, floor areas (including any total floor area), openings and orientations are approximate. No details are guaranteed, they cannot be relied upon for any purpose and do not form any part of any agreement. No liability is taken for any error, omission or misstatement. A party must rely upon its own inspection(s). Powered by [www.Propertybox.io](http://www.Propertybox.io)

Prospective purchasers should be aware that these sales particulars are intended as a general guide only and room sizes should not be relied upon for carpets or furnishing. We have not carried out any form of survey nor have we tested any appliance or services, mechanical or electrical. All maps are supplied by Goview.co.uk from Ordnance Survey mapping. Care has been taken in the preparation of these sales particulars, which are thought to be materially correct, although their accuracy is not guaranteed and they do not form part of any contract.

