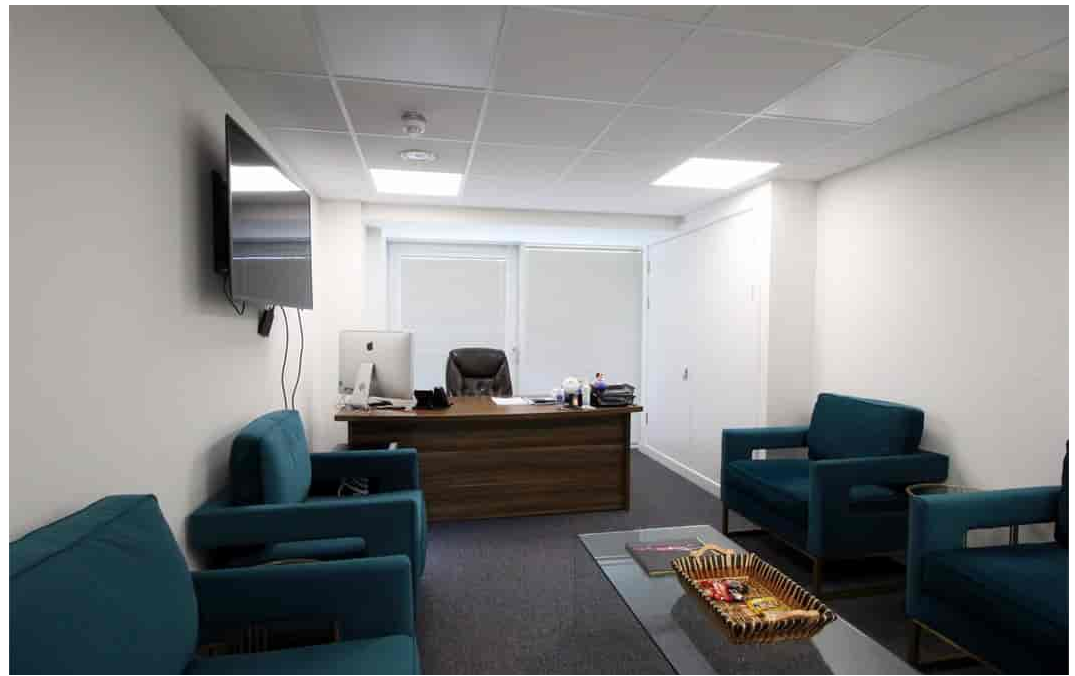
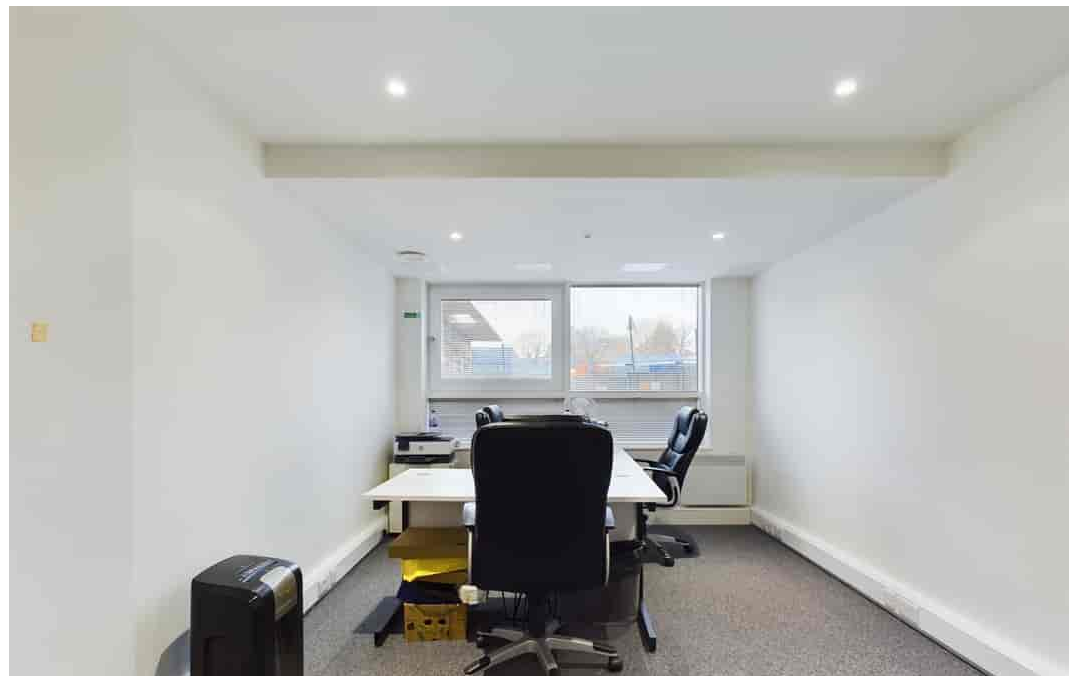
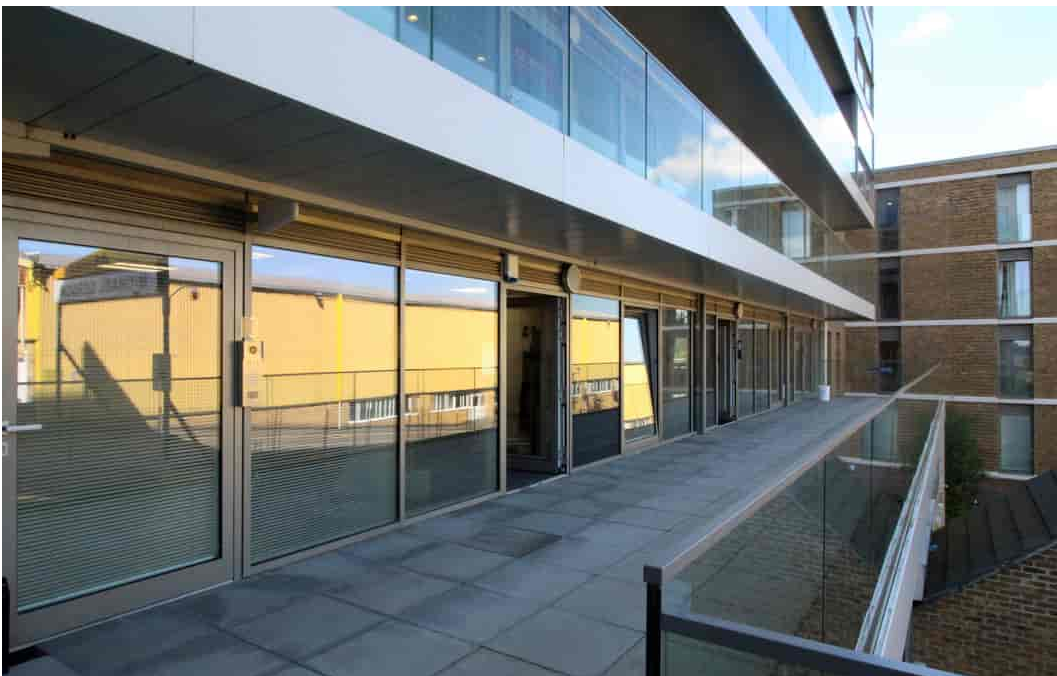




Cadbury Close, Whetstone. N20 9BD

Starting From £1,300 pcm





- GROUND FLOOR OFFICE SUITE
- GROUND FLOOR + WIFI BOOSTER

- SHORT TERM LETS AVAILABLE
- KITCHEN AND WC FACILITIES

- OFFICES CAN BE LET INDIVIDUALLY
- SECURE OFF STREET PARKING

We are pleased to offer a selection of quality offices on the ground and lower ground floor of this exclusive ultra-modern building, occupying overall in excess of 4,850 square feet.

It is located on the borders of Whetstone, Barnet and Totteridge, with local transport facilities all within close proximity, and a variety of restaurants which can be found within walking distance.

Ranging in sizes from two to up to ten in personnel capacity, all of the offices benefit from air conditioning which is enhanced by a purified fresh air filtration system, WiFi signal boosters, a video entry system, and access to very smart kitchen and WC facilities. Secure off street parking can also be made available.

The offices can be let individually or in bulk if required, and short term lets are also an option on the whole or part of the building.

The rents range from £1,300 per month, are inclusive of Service Charges and Business Rates, and are subject to VAT.



Edgware
02086 214 000
office@abcestates.co.uk

