

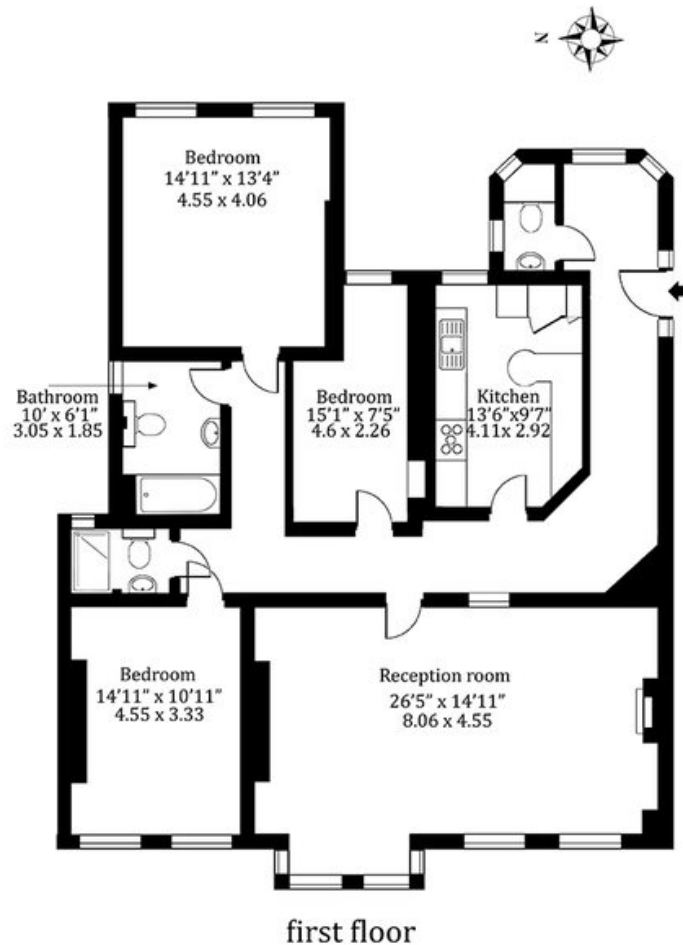


St James Mansions, West End Lane, London, NW6

£4,000 pcm

- 3 Bedroom Apartment
- Communal Gardens
- Available 25th March 2024
- Part Furnished
- Bright & Spacious Throughout
- Fast Commute into Central London
- Mansion Block Apartment

St. James Mansions NW6



Approx Gross Internal Area 1605 sq ft - 149 sq m

Measured in accordance with RICS guidelines. Every attempt is made to ensure accuracy
However all measurements are approximate.
The floor plan is illustrative purposes only and is not to scale
www.tomeiphotography.co.uk

