



Morello Way, Holwell Bury, Hitchin, Hertfordshire, SG5 3FT
Guide Price £850,000 Freehold

Satchells





Introduction

Set within the prestigious Stone Hill Mill development in Holwell Bury on the edge of Lower Stondon, this striking Richmond-style home recently constructed by Redrow is a masterclass in craftsmanship, design, and location.

Built by Redrow as part of its Heritage collection, the property showcases a refined exterior inspired by classic British architecture, blending traditional character with modern construction standards. From its Arts & Crafts brickwork to its thoughtfully designed layout, every element reflects a commitment to quality, durability, and timeless appeal. Boasting 2,002 sq ft of living space, this home offers expansive modern family living with a consistently beautiful aesthetic.

Step Inside

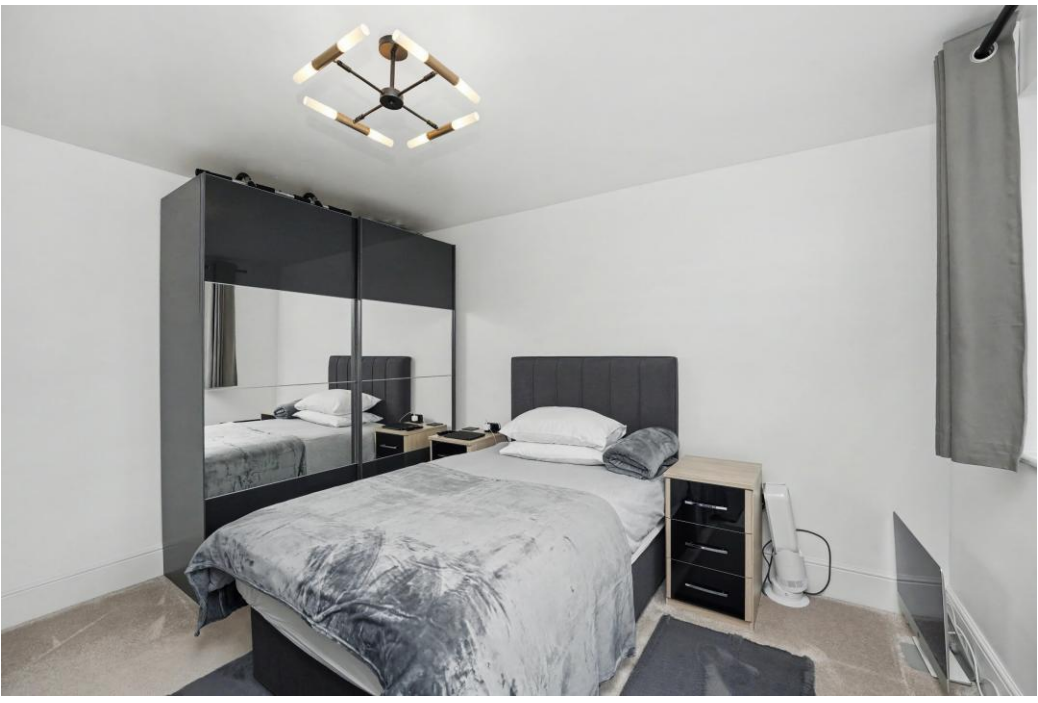
Upon entering, the ground floor immediately reveals the scale and quality of this beautifully built Richmond-style home. Spanning the rear of the property, the open-plan kitchen, dining, and family room forms an impressive centrepiece, designed with both proportion and practicality in mind. Generous in size and flooded with natural light, this space showcases the home's modern construction and thoughtful layout, offering a seamless setting for everyday living within a well-defined, high-spec environment.

At the heart of the home this stunning kitchen features a large kitchen island, sleek shaker style cabinetry with plenty of storage space, and integrated appliances. To the front, the living room presents a more formal aspect of the property, a well-proportioned and private space that reflects the home's traditional influence, offering a clear distinction between entertaining and relaxation areas.

Further practicality is delivered through a conveniently placed cloakroom, while internal access to the double garage highlights the property's focus on ease and efficiency, integrating storage and secure parking directly into the home's footprint.

Upstairs, the property continues to impress with a collection of well-appointed bedrooms. The principal bedroom benefits from generous proportions, an en-suite and walk-in wardrobe, while the additional rooms provide flexibility for family living, guests, or a home office. A stylish and contemporary bathroom completes the upper level.





Step Outside

To the front, the property presents a commanding and elegant presence, defined by its classic architecture and carefully considered positioning within the development. A neatly arranged frontage enhances the sense of arrival, while the double garage and driveway provide ample parking, seamlessly integrated into the overall design.

To the rear, the property enjoys a private and enclosed garden. Accessible from the main family area and dining space, a patio area sits directly off the rear of the property, ideal for outdoor dining and entertaining, leading onto a well-proportioned lawn that offers plenty of room for relaxation or family activities. The garden provides a peaceful backdrop, framed by the surrounding character of the Stone Hill Mill development.

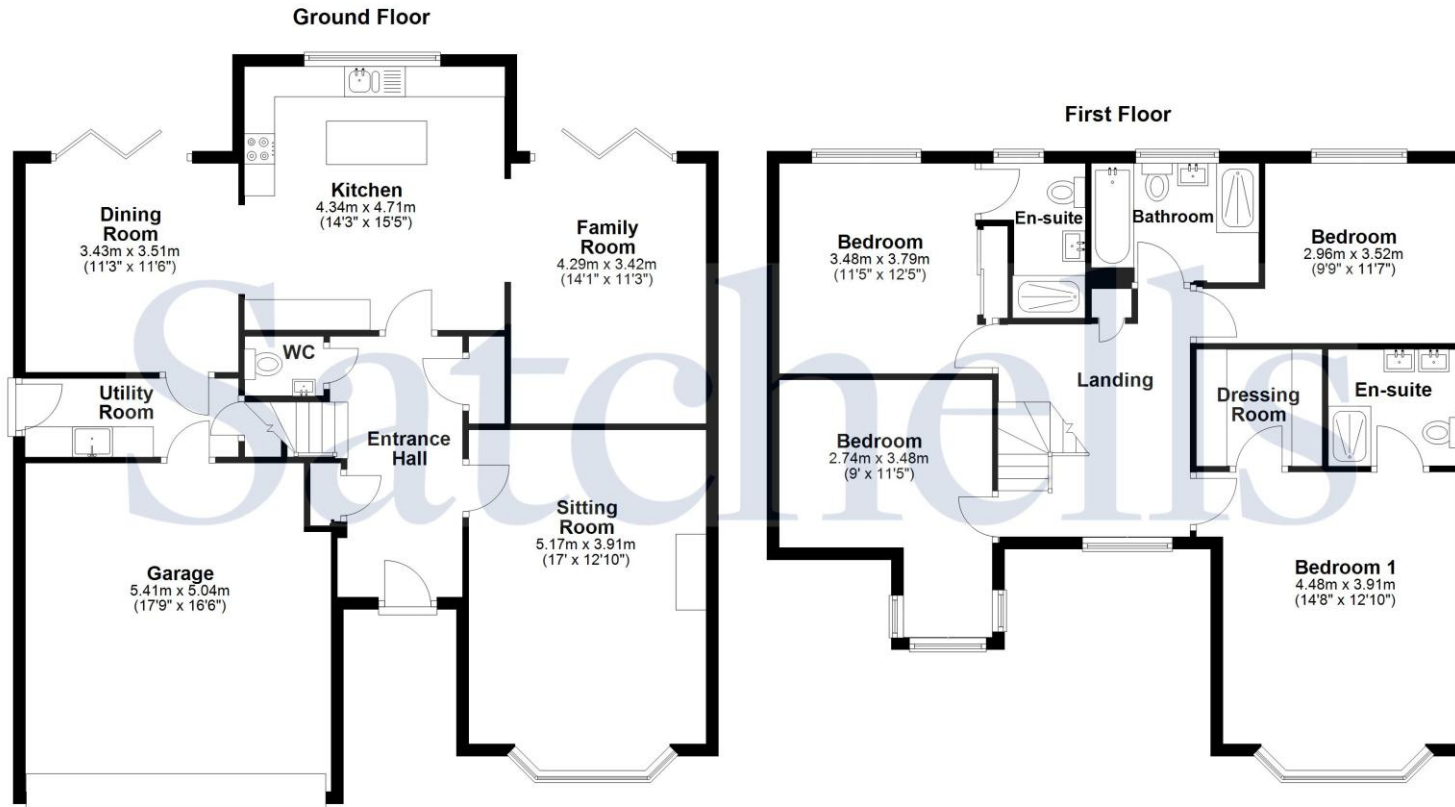
About the area

Stone Hill Meadow is thoughtfully designed to prioritise green spaces, scenic walking and cycling routes, and a genuine sense of community, all while encouraging a close connection to nature. Nestled amidst beautiful countryside, Lower Stondon offers an ideal setting for those who enjoy outdoor living.

The village is particularly appealing to families, with well-regarded local schools and a strong calendar of community events and activities. Residents also benefit from a range of convenient amenities.

For commuters, the location is highly practical, with Arlesey station just a short distance away. Meanwhile, the historic market town of Hitchin is only minutes away, offering a vibrant, cosmopolitan atmosphere with an excellent selection of restaurants, bars, and boutique shops.





For illustration purposes only - Measurements shown are approximate. The size and position of doors, windows, appliances and other features are approximate. Plan produced using PlanUp.

These particulars are a guide only and do not constitute an offer or a contract. The floorplan is for identification purposes only and not to scale. All measurements are approximate and should not be relied upon if ordering furniture, white goods and flooring etc. We have presented the property as we feel fairly describes it but before arranging a viewing or deciding to buy, should there be anything specific you would like to know about the property please enquire. Satchells have not tested any of the appliances or carried out any form of survey and advise you to carry out your own investigations on the state, condition, structure, services, title, tenure, and council tax band of the property. Some images may have been enhanced and the contents shown may not be included in the sale. Satchells routinely refer to 3rd party services for which we receive an income from their fee. If you would like us to refer you to one of these services, please ask one of our staff who will pass your details on. We advise you check the availability of the property on the day of your viewing.



Satchells



47b High Street, Stotfold, Hitchin, Hertfordshire, SG5 4LD.
01462 733730
stotfold@satchells.co.uk
www.satchells.com

Satchells