

2 Bedroom(s), Apartment, Leasehold (to be confirmed)

Kentmere Drive, Lakeside.



- 3D Virtual Tour Available
- Spacious Ground Floor Apartment
- Lounge
- Bathroom
- Lakeside Location

- No Chain
- Recently Fitted Modern Kitchen
- Two Bedrooms one with En Suite
- Allocated Underground Parking

£135,000
For Sale

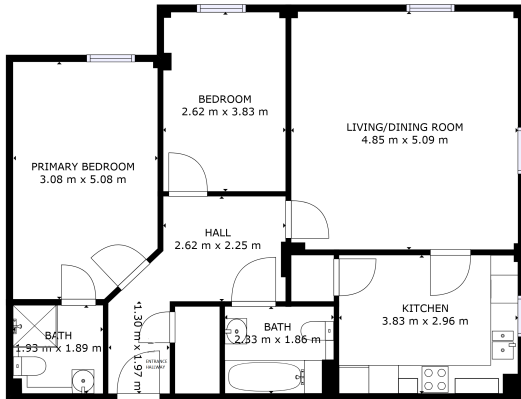
Book your viewing today Tel: 01302 247754

Owner's View

33D Virtual Tour Available- Take a closer, more detailed look around via our 3D Virtual Tour! Don't forget that you can also check availability for viewings online via a visit to our website..."Introducing Kentmere Drive: A generously sized ground floor apartment in Lakeside, Doncaster, offering two bedrooms with en suite facilities. This property boasts views of a picturesque farm, perfect for those seeking tranquillity and charm.

Ground Floor Apartment

Floor Plan



FLOOR 1

GRAND INTERNAL AREA:
FLOOR 1: 89 m²
TOTAL: 89 m²
SIZES AND EXPRESSIONS ARE APPROXIMATE, ACTUAL MAY VARY.



Master Bedroom With En Suite



Kitchen Diner



Second Bedroom



Lounge



Bathroom



offer or any contract. The Property Hive accept no liability for the accuracy of the contents, and therefore they should be independently verified by prospective buyers or tenants before agreeing an offer. All measurements provided are approximate and should be verified before exchange of contracts. No appliances, fixtures or fittings have been tested and should be checked by the buyer before exchange of contracts to ensure they are in good working order.

External

Front Aspect




Property Information

- Council Tax Band -
- Utilities - Mains Gas, Mains Electricity, Mains Water
- Water Meter -
- Average Annual Electricity Bills -
- Average Annual Gas Bills -
- Average Annual Water Bills -
- Tenure -
- Solar Panels -
- Space Heating System -
- Approximate Heating System Installation Date -
- Water Heating System -
- Approximate Water Heating Installation Date -
- Boiler Location -
- Approximate Electrical System Installation Date -
- Approximate Electrical System Test Date -
- Fires/Heaters -
- Permanent Loft Ladder -
- Loft Insulation -
- Loft Boarded out -

Whilst every effort is made to ensure that the information contained in these particulars is reliable, they do not constitute or form part of an

All measurements provided are approximate and should be verified before exchange of contracts. No appliances have been tested and should be checked to ensure they are in good working order.

Energy Performance Certificate

Energy Efficiency Rating		
	Current	Potential
<i>Very energy efficient - lower running costs</i>		
(92-100) A		
(81-91) B		
(69-80) C	70	78
(55-68) D		
(39-54) E		
(21-38) F		
(1-20) G		
<i>Not energy efficient - higher running costs</i>		
England, Scotland & Wales		EU Directive 2002/91/EC 

All measurements provided are approximate and should be verified before exchange of contracts. No appliances have been tested and should be checked to ensure they are in good working order.