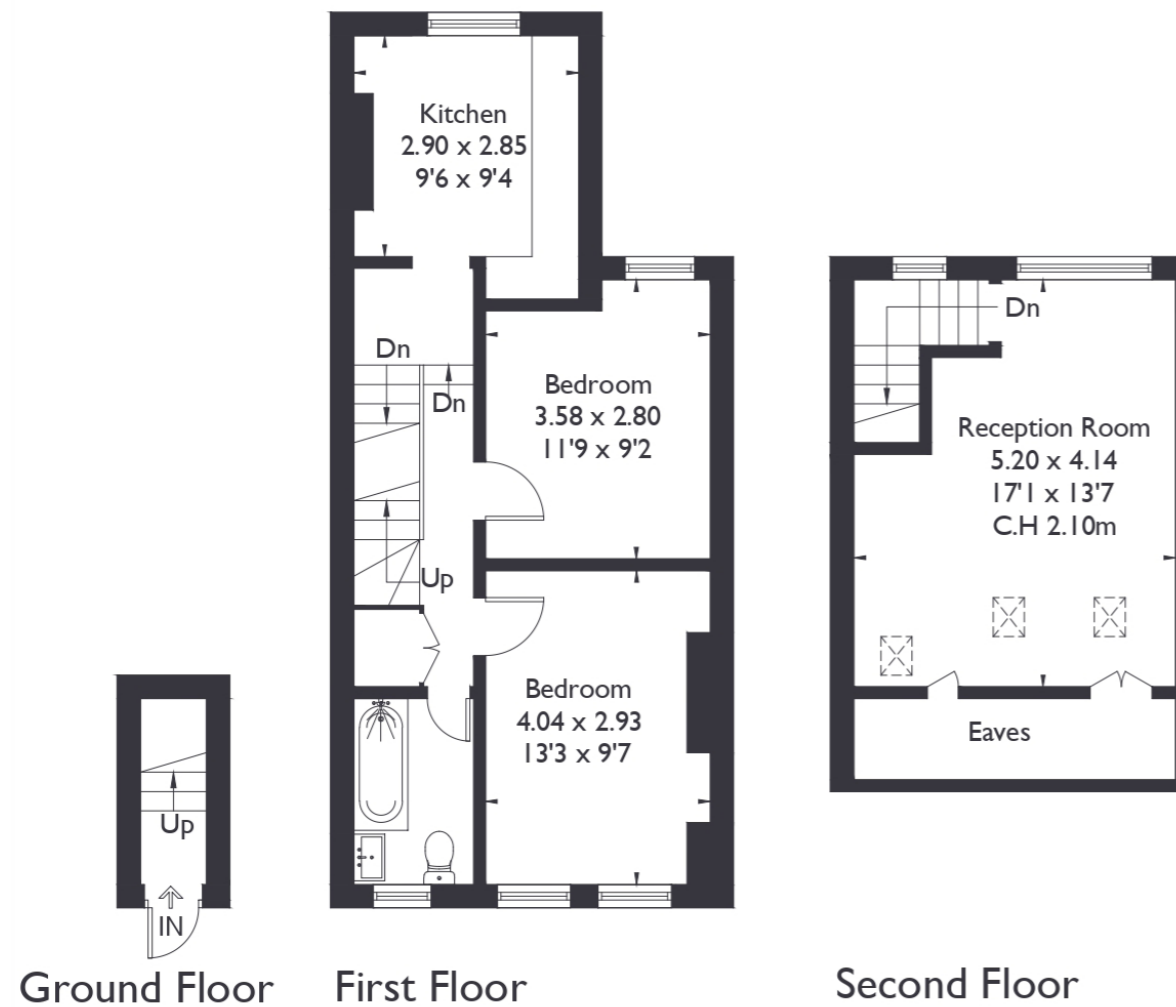


Balfour Road W13

Approximate Floor Area = 68.8 sq m / 740 sq ft
(Excluding Eaves)



2 BEDROOM FLAT

Balfour Road, W13
£485,000

Welcome to this delightful two bedroom, one bathroom top floor flat in Northfields. This bright and airy property features a loft extension converted into a spacious living area, adding to its charm. The flat offers a well-sized kitchen and two double bedrooms, making it perfect for young families.

FEATURES

- Two Bedrooms
- One Bathroom
- Separate Kitchen/Living
- Fielding Primary School
- Northfields Station
- Northfields Avenue Amenities
- EPC Rating D



2 BEDROOM FLAT

Balfour Road, W13

Located close to Northfields' amenities and Northfields station, it provides excellent convenience.

Additionally, it falls within the catchment area for the highly regarded Fielding Primary School. The property is also close to all transport links, including the Elizabeth Line, with West Ealing station just a 15-minute walk away.

EPC Rating D.

