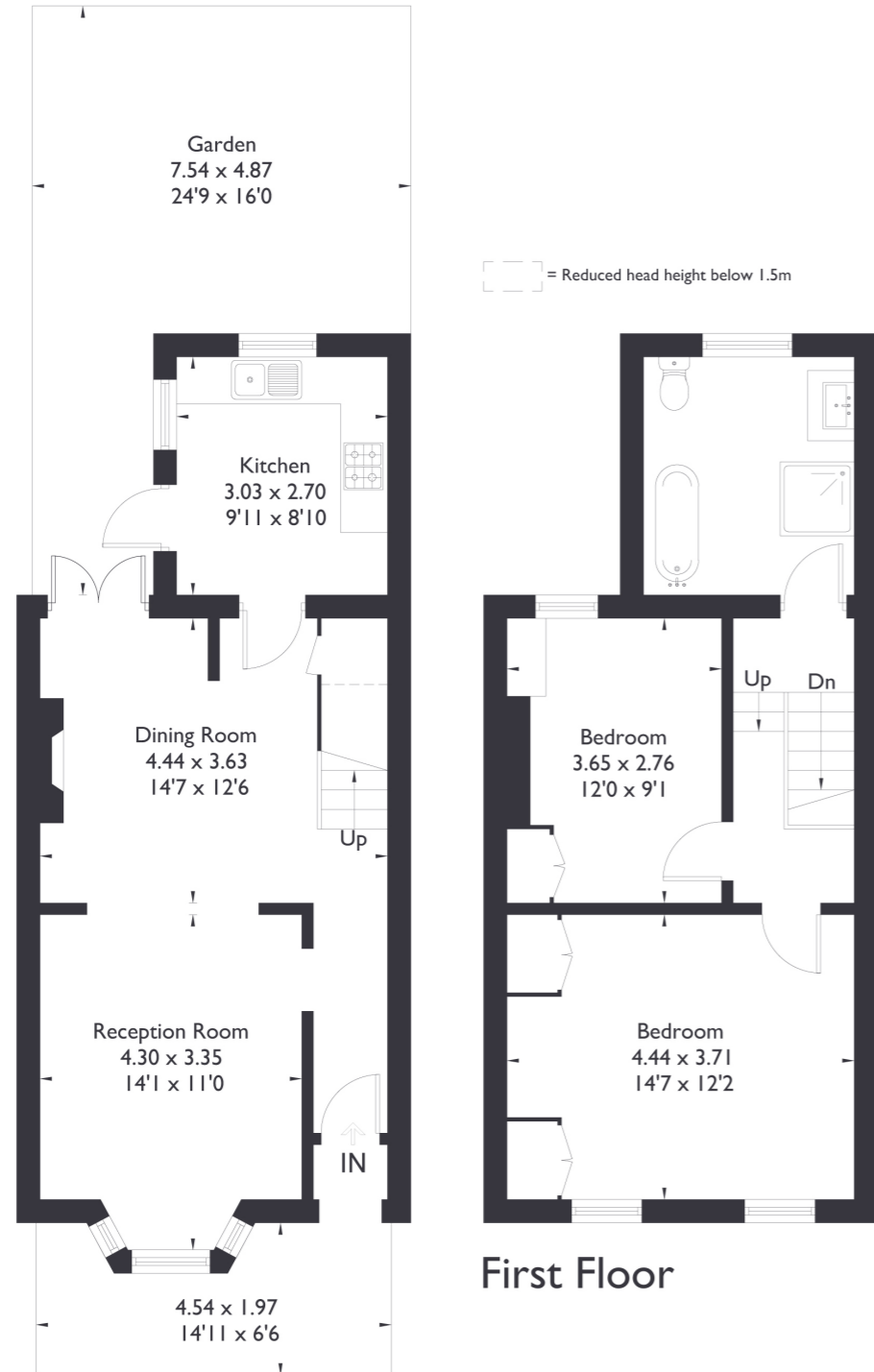


Northfield Road, W13

Approximate Floor Area = 84.6 sq m / 911 sq ft



Ground Floor

First Floor



2 BEDROOM HOUSE

Northfield Road, W13

£750,000

Welcome to this charming two bedroom, one bathroom property nestled in the heart of Northfields. Boasting a tasteful interior, this home is bathed in natural light throughout. Upon entering, you are greeted by a spacious living and dining area, seamlessly flowing into the garden. Adjacent is a separate kitchen, also offering garden access, adding convenience to daily living.

FEATURES

- Two Bedrooms
- One Bathroom
- Separate Kitchen/Dining
- Northfields Amenities
- Fielding Primary School
- Northfields Station/West Ealing Station 10 min Walk (Elizabeth Line)
- EPC Rating C



2 BEDROOM HOUSE

## Northfield Road, W13

Ascending the stairs, you'll discover a stunning bathroom featuring a luxurious free standing bath and a separate shower, providing a spa like retreat within the comfort of home.

Two generously sized double bedrooms offer ample space and comfort, complemented by abundant storage options. The potential of this property extends upwards, with the opportunity to expand into the loft space, subject to obtaining the necessary planning permissions. Conveniently located, the property is just a short stroll away from the vibrant amenities of Northfields and within easy reach of Northfields station, offering swift connections to central London. Additionally, West Ealing station, boasting the Elizabeth line, is a mere 15 minute walk away, enhancing connectivity even further. Families will appreciate the proximity to the highly regarded Fielding Primary School, adding to the allure of this wonderful home. Don't miss the opportunity to make this property your own and embrace the lifestyle of Northfields living at its finest. EPC Rating C.

