



Glentworth Court, Stonegrove,
Edgware. HA8 7UE



£450,000

Leasehold

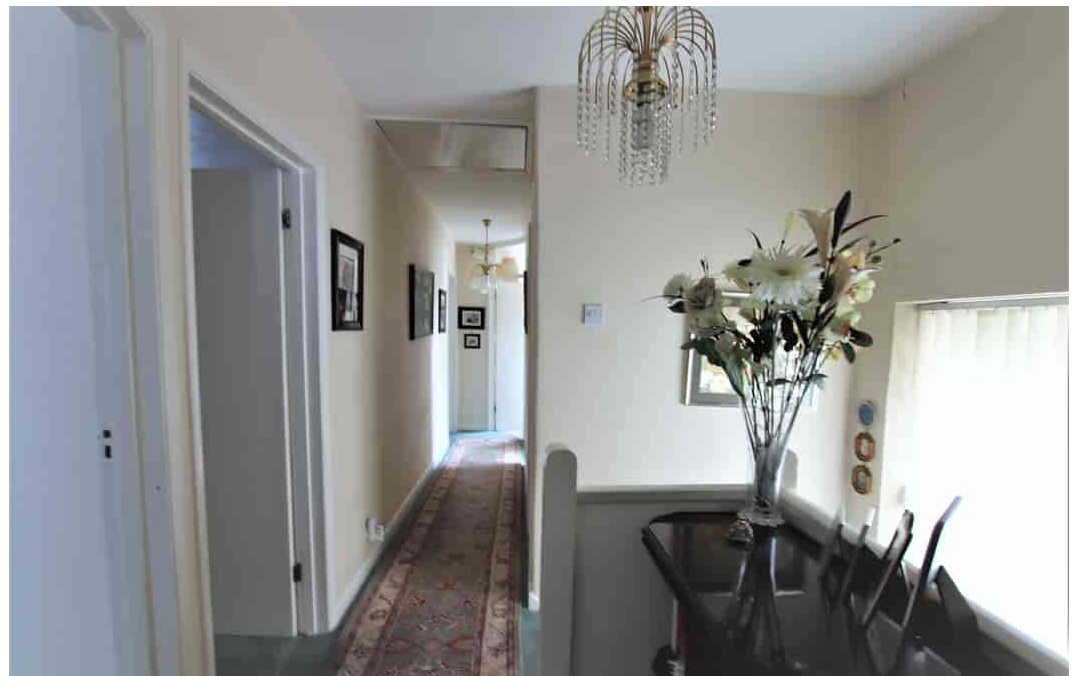
This spacious first floor maisonette occupies approximately 861 square feet, and is situated literally minutes from Edgware and Stanmore, with both of the areas shopping centres, many transport links and amenities.

It has three bedrooms, which offers the flexibility to use one as a dining room.

The reception room is a very generous size, as is the main bedroom.

Unusually, is also has the benefit of both a private garage and off street parking to the front.



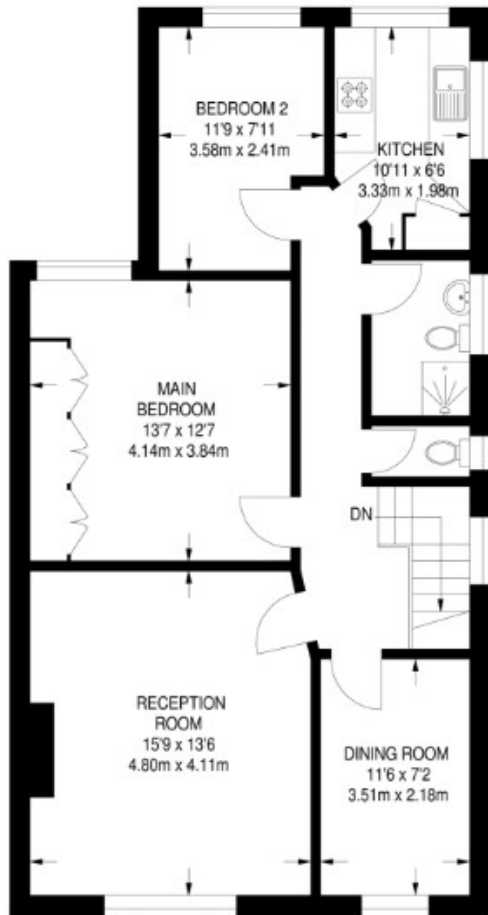




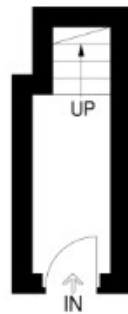
- MAISONETTE
- OFF STREET PARKING
- FLEXIBLE ACCOMMODATION

- THREE BEDROOMS
- CLOSE TO LOCAL AMENITIES AND TRANSPORT LINKS
- BRIGHT AND SPACIOUS PROPERTY

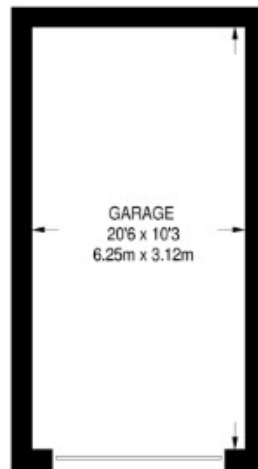
- GARAGE
- LONG LEASE
- LOFT ACCESS



FIRST FLOOR
817 SQ FT / 75.9 SQ M




GROUND FLOOR
44 SQ FT / 4.1 SQ M



(NOT SHOWN IN ACTUAL
LOCATION / ORIENTATION)

APPROXIMATE GROSS INTERNAL AREA = 861 SQ FT / 80.0 SQ M
GARAGE = 215 SQ FT / 20.0 SQ M
TOTAL = 1076 SQ FT / 100.0 SQ M



Energy Efficiency Rating		Current	Potential
<i>Very energy efficient - lower running costs</i>			
(92-100)	A		
(81-91)	B		
(69-80)	C	69	76
(55-68)	D		
(39-54)	E		
(21-38)	F		
(1-20)	G		
<i>Not energy efficient - higher running costs</i>			
England, Scotland & Wales		EU Directive 2002/91/EC 	

Edgware

02086 214 000

office@abcestates.co.uk