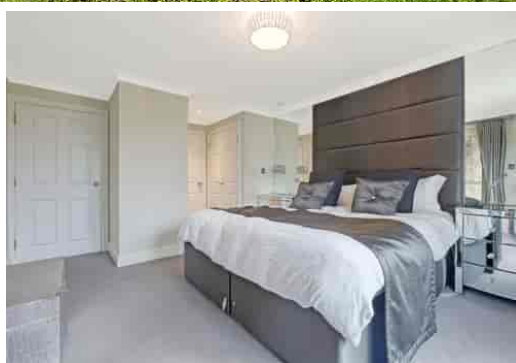


COURT^{COX}



Rudyard Court, Kipling Close, Warley, Brentwood, Essex, CM14 5WY,
£425,000

A spacious two bedroom, two bathroom apartment located in a premium development with secure underground parking and lift access. The layout of the property is well thought out with a kitchen/diner and a large living room, the living room and the master bedroom each have access to separate balconies that have far reaching countryside views. The ensuite shower room and main bathroom are beautifully fitted with contemporary fittings. Brentwood High Street and railway station are each within easy access.