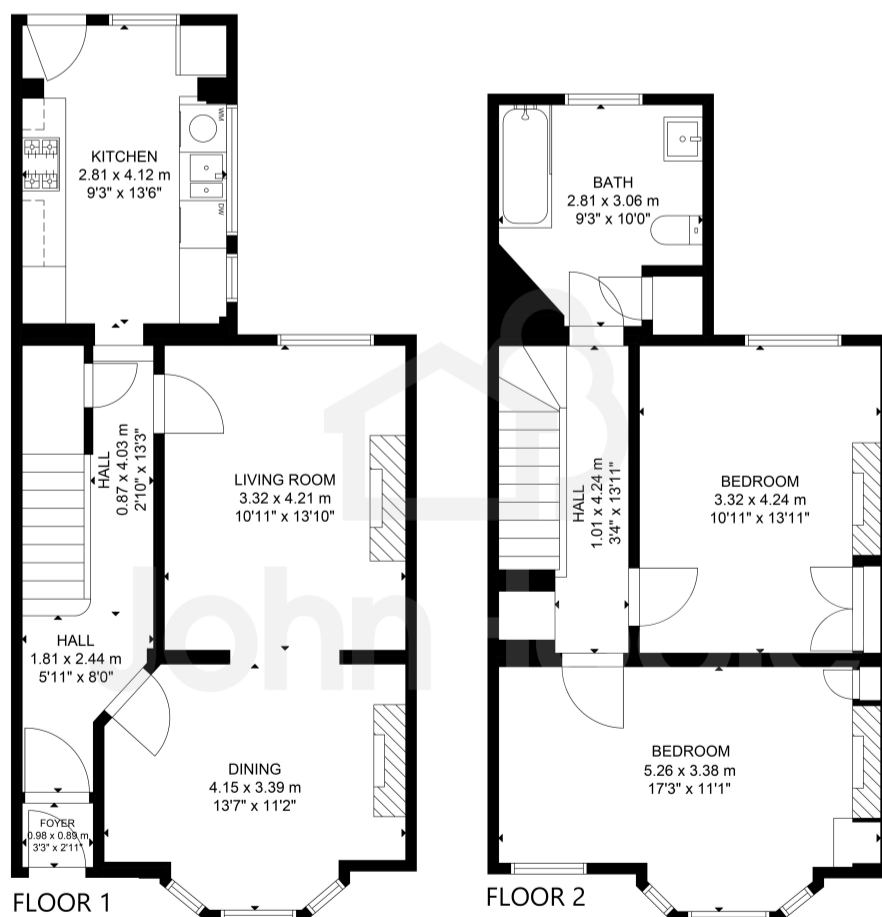
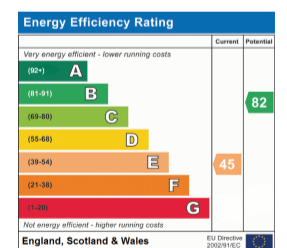




Compton Road, Brighton, BN1 5AL
 £650,000



GROSS INTERNAL AREA
 TOTAL: 99 m²/1,074 sq ft
 FLOOR 1: 51 m²/554 sq ft, FLOOR 2: 48 m²/520 sq ft
 SIZE AND DIMENSIONS ARE APPROXIMATE, ACTUAL MAY VARY.



01273 555115
 info@johnhoole.co.uk
 johnhoole.co.uk
 214 Dyke Road | Brighton | BN1 5AA

Agents note: All measurements are approximate and whilst every attempt has been made to ensure accuracy they are for general guidance only and must not be relied on. The fixture and fittings referred to have not been tested and therefore no guarantee can be given that they are in working order. Internal photographs are reproduced for general information and it must not be inferred that any item shown is included with the property.





Situated in Compton Road, this delightful Edwardian terraced house offers the perfect blend of traditional charm and contemporary living. Popular for its proximity to top-rated schools, excellent commuter links and a warm, friendly community, this location is as desirable as it gets.

The property boasts two generously sized double bedrooms and a very spacious bathroom, providing ample accommodation for a growing family or those who appreciate extra space. The sociable through lounge/dining room is ideal for entertaining, seamlessly flowing into a separate kitchen that offers a lovely outlook over the west-facing garden.

Lovingly refurbished and meticulously maintained by the current owners, every room in this home is tastefully decorated with contemporary colour schemes that complement the traditional features such as decorative fireplaces, large sash windows and high ceilings. The result is a harmonious blend of old-world elegance and modern comfort.

For those looking to expand, there's further scope to increase the accommodation, potentially through a side extension or loft conversion, subject to the necessary consents.

Step outside from the kitchen to discover a beautifully landscaped walled rear garden. This outdoor oasis features a thoughtful mix of paved, lawned, and terraced areas, and is adorned with carefully selected shrubs and flowers that highlight a charming small pond.

This Edwardian gem immediately feels like home, with nothing more to do than move in and enjoy the exceptional lifestyle that Compton Road has to offer.



- EDWARDIAN TERRACED HOUSE
- TWO DOUBLE BEDROOMS
- LARGE FAMILY BATHROOM
- WEST FACING GARDEN
- PERIOD FEATURES
- WELL MAINTAINED AND PRESENTED
- WITHIN CATCHMENT OF RENOWNED SCHOOLS
- CLOSE PROXIMITY TO AMENITIES & COMMUTER LINKS
- LOFT CONVERSION POTENTIAL (STNC)
- VIEWS